



SERIES 850SAA-20
STAND ALONE AUTOMATIC WINDER STRETCH
WRAP SYSTEM WITH VARIABLE TENSION



OPERATORS
MANUAL

Table of Contents

Warranty.....	3
Assembly.....	4
Set-up.....	4
Film loading	4-5
Controls.....	5
Operating Instructions.....	6
Maintenance.....	7
Adjustments.....	7
Trouble Shooting.....	8
Programming the AC Drives (Telemecanique)...	8
Parts list.....	9-19
Wiring Diagram.....	20-23
PLC Program.....	24-35

Introduction

Congratulations! Your purchase of a Kalamazoo Series 800SAA Fully-Automatic Horizontal Winder Stretch Wrap System will provide you with years of efficient stretch wrapping service. Your investment will ensure that your products will arrive cleaner, with less damage and pilferage at their destination at a lower cost to you.

Warranty

Kalamazoo Packaging Systems products carry a LIMITED LIFETIME WARRANTY on all K.P.S. manufactured components; all parts not manufactured by Kalamazoo Packaging Systems will be subject to the original manufacturer's warranty.

Kalamazoo Packaging systems, Inc. (KPS) agrees to furnish the purchaser, without charge, F.O.B. the factory, any part found to be defective in either material or workmanship within one (1) year from date of shipment, provided the purchaser gives immediate notice of any defect and description of that defect to KPS. KPS reserves the right to inspect any defective part to verify the defect and to determine probable cause of same.

The liability of KPS under this warranty is limited to furnishing replacements for defective parts, and unless otherwise agreed to in writing, the purchaser shall bear the expense of installation.

Failure of equipment or parts due to abuse, misuse, neglect, incorrect operating techniques or power line drops or surges shall not constitute failure because of defective material or workmanship, and are expressly excluded from this warranty.

The above is the only warranty with no other guarantees which extend beyond the above and the seller disclaims any implications including but not limited to a warranty of merchantability.

Assembly

Your Horizontal Winder has been assembled and tested at our manufacturing plant and released for shipment by a qualified technician. If the unit was shipped via common carrier or by our truck it may not be crated. **Any damage done in transit should be reported to the carrier immediately.** All our shipments are sent F.O.B. Grand Rapids, Michigan, therefore; the customer is responsible to settle any damage claims with the transportation company. Kalamazoo Packaging Systems will do everything possible to assist you in these matters.

Main Power Supply & Air Source

Wire in the main power cord see wiring diagram for voltage.

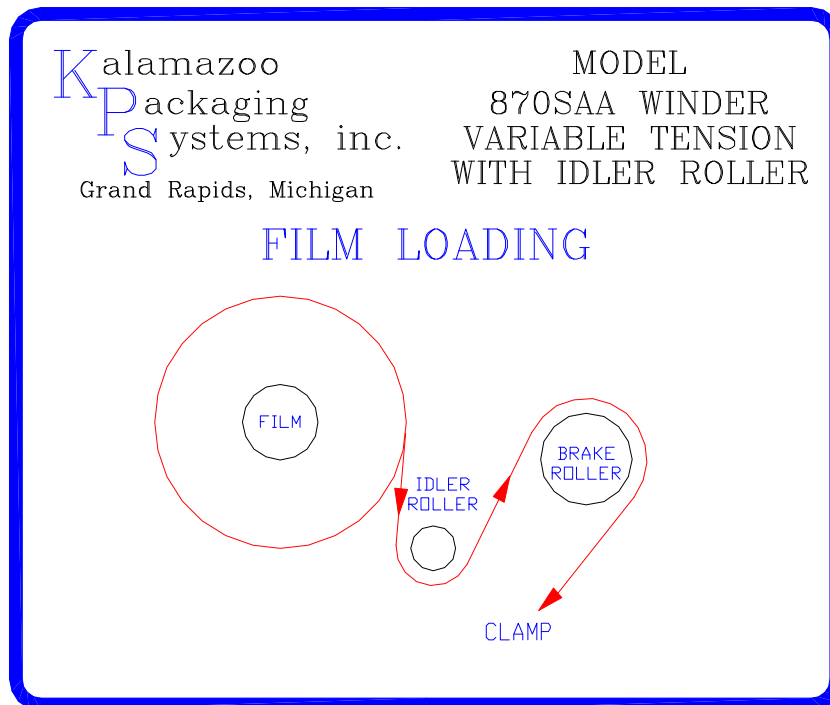
Air Source may be needed. If so use 80 P.S.I.

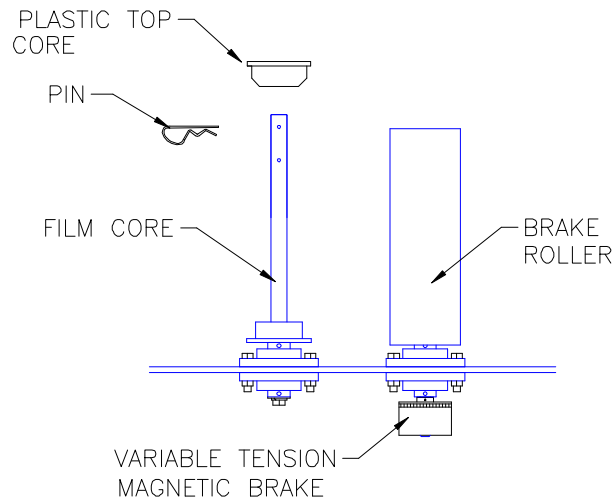
NOTE: The use of an extension cord may reduce the efficiency and life of the machine and is not recommended.

The System is now ready for operation.

Film Loading

Your wrapper is equipped with a Kalamazoo Variable Tension Film Delivery System. Place a roll of 10-12" or 20" stretch film on the film core holder and thread the film as shown on the diagram below. Once the film is loaded and the desire film tension is arrived at the film tension need not be adjusted again until the brand of film or the film thickness is changed.





FILM LOADING AND TENSIONING

Place a roll of 10-12" or 20" film onto the film holder so the film unwinds clockwise, than slide the plastic top core into place and install the pin into the hole.

(note: The film film core does not change the film tension.)

Thread the film as shown on the diagram.

Adjust the variable tension magnetic brake to the film tension you desire. Loosen the two set screws in the brake with a 5/64" allen wrench adjust the tension and retighten the set screws.

Operating Controls

- 1 Red (push off/ turn to reset): E-Stop button.
- 2 Green lighted push button: Machine power on.
- 3 Red Mushroom push button: Machine power off.
- 4 Red push button: Stop wrap cycle or use the remote.
- 5 2-Pos. Selector switch: Winder auto/manual.
- 6 Blue push button: Film load.
- 7 White push button: Film reset & Cycle reset.
- 8 Start cycle photo-eye: Banner photo-eye will start the wrap cycle. Located top inside of the Winder cage.
- 9 Stop remote control: Stops the wrap cycle.
- 10 Winder Ring home sensor: Located behind the Winder Ring

Operating Instructions

START UP

- 1 Push the Green lighted button POWER ON: The system is now ready. The green beacon light will come on.
- 2 Check to make sure you have 80 p.s.i. air to the machine.

FILM LOADING

- 1 Push the FILM LOAD button. The film holder cylinder will open.
- 2 Open the film loading door and load the film pre the diagram on page #4.
- 3 Pull the film out and lay it across the film holder.
- 4 Close the film door.
- 5 Push the RESET button The film holder cylinder will close.)
- 6 The system is now ready for the first load.

WRAP CYCLE

- 1 Bring the load to the Winder with a fork truck.
- 2 When the load is position in the Winder the yellow light will come on and after a preset time the yellow light will start flashing. The Winder will automatic start wrapping the load.
- 3 Use the fork truck to slowly move the load in.
- 4 After the load is wrapped use the REMOTO control to start the automatic film cutting.
- 5 After the film is cut the yellow light will stop flashing.
- 6 You may now remover the load from the Winder.
- 7 The yellow light will stay on for a preset time so the same load does not get wrapped again.
- 8 After the yellow light goes off and the green light comes back on the system is reset and ready for the next load..
- 9 End of wrap cycle.

GENERAL MAINTENANCE

Warning!!

MAKE SURE THAT THE POWER SUPPLY IS DISCONNECTED BEFORE ATTEMPTING TO SERVICE ANY COMPONENTS. IF THE POWER DISCONNECT IS OUT OF SIGHT, LOCK IT IN THE OPEN POSITION AND TAG IT TO PREVENT UNEXPECTED APPLICATION OF POWER.

Cleaning

Periodically clean dirt accumulations from machine, especially around moving parts and drive components, preferably by vacuuming.

General

- Check and tighten any loose fasteners.
- Check all electric connections and replace any worn or frayed cords.
- Check all fuses, circuit breakers, and AC controllers.
- Make sure the air supply is on.

Lubrication

Bearings

- The bearings have been greased at the factory and are ready to run. It is recommended that all mounted bearings and support wheels be relubricated with #3 lithium base grease every three months.

Chains

- Clean, lubricate and adjust chains every month. Chain should be lubricated with a penetrating type commercial chain lube.

Gear Reducers

- For new reducers, change the oil 120 hours after the reducer starts operating (based on 8 hours per day of operation). After the first oil change, change oil every 2000 operating hours, or every six months, whichever occurs first.

Temperature	Lubricant
25° - 125° F	AGMA #8
15° - 60° F	AGMA #7

Certain conditions (dust, water, etc.) may require a change of lubricating periods as dictated by

Adjustments

This is a automatic system. Do not make adjustments without contacting Kalamazoo Packaging Systems.

Troubleshooting

When any problem develops, review the operating instructions. Diagnose specific problems and review the options below.

Push the E-STOP button in wait 1 min.. Turn the button to reset.

This will denenergize the AC drives and reset a fault.

- ✓ Check wall receptacle for power.
- ✓ Check Power cord for cut. (Fork Lift Trucks damage cords.)

DISCONNECT POWER FROM MACHINE

- ✓ Check the film door limit switches for damage, sticking, or internal shorts.
- ☞ Visually inspect for loose wires and for signs of arcing or burning of any of the components.
- Check chains and sprockets.
- Check air supply.
- Open cabinet and check that all relays are firmly seated in their bases.
- Check for damage cords.
- Check the AC drive for errors.

☎ It is advisable to call for technical assistance at this point.

Technical and Customer Service is available from Kalamazoo Packaging Systems, Inc., Monday thru Friday 7:30 A.M. to 4:00 P.M. (EST). Stock is maintained on parts to allow us to ship the same day on most orders.

If you have a problem, we want to know about it! Please call and report any difficulties you may encounter.

• Local - (616) 534-2600 • National - (800) 253-4625

Telemecanique AC Drive Programming

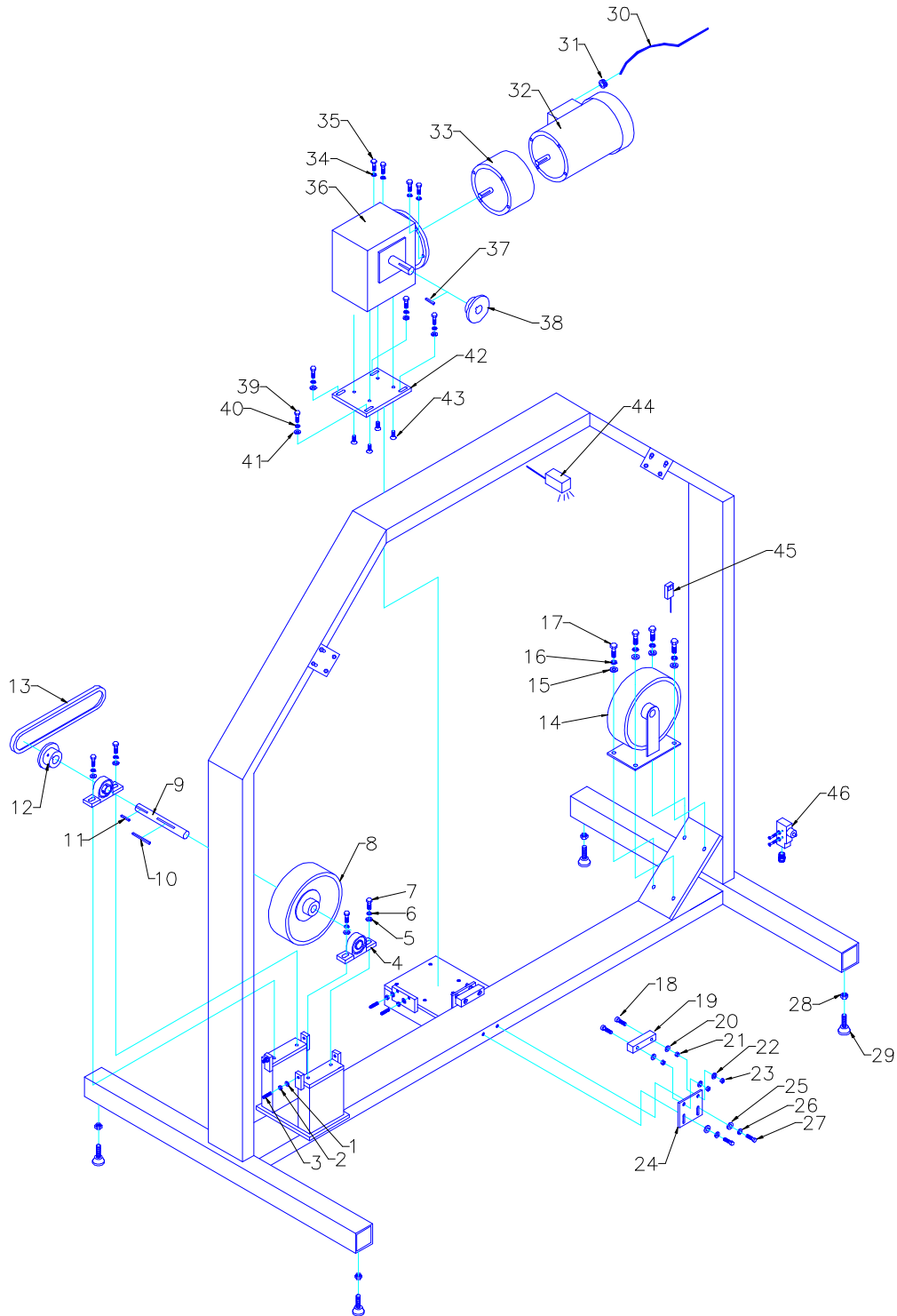
To change a parameter in the AC Drive.

1. Press the up or down key to get into the parameter you would like to change.
2. Press the ENT key.
3. Use the up/down arrow key to change the value.
4. Press the ENT key.
5. Press the ESC key.

Winder

Acc.	5.0
Dec.	2.5
SFr	2.0
tCC.	2C
Sp2	7.5HZ
rFr	ENTER
tUn	YES
UFr	50
bFr	60

Kalamazoo Packaging Systems Model #800SAA Stand Alone Automatic



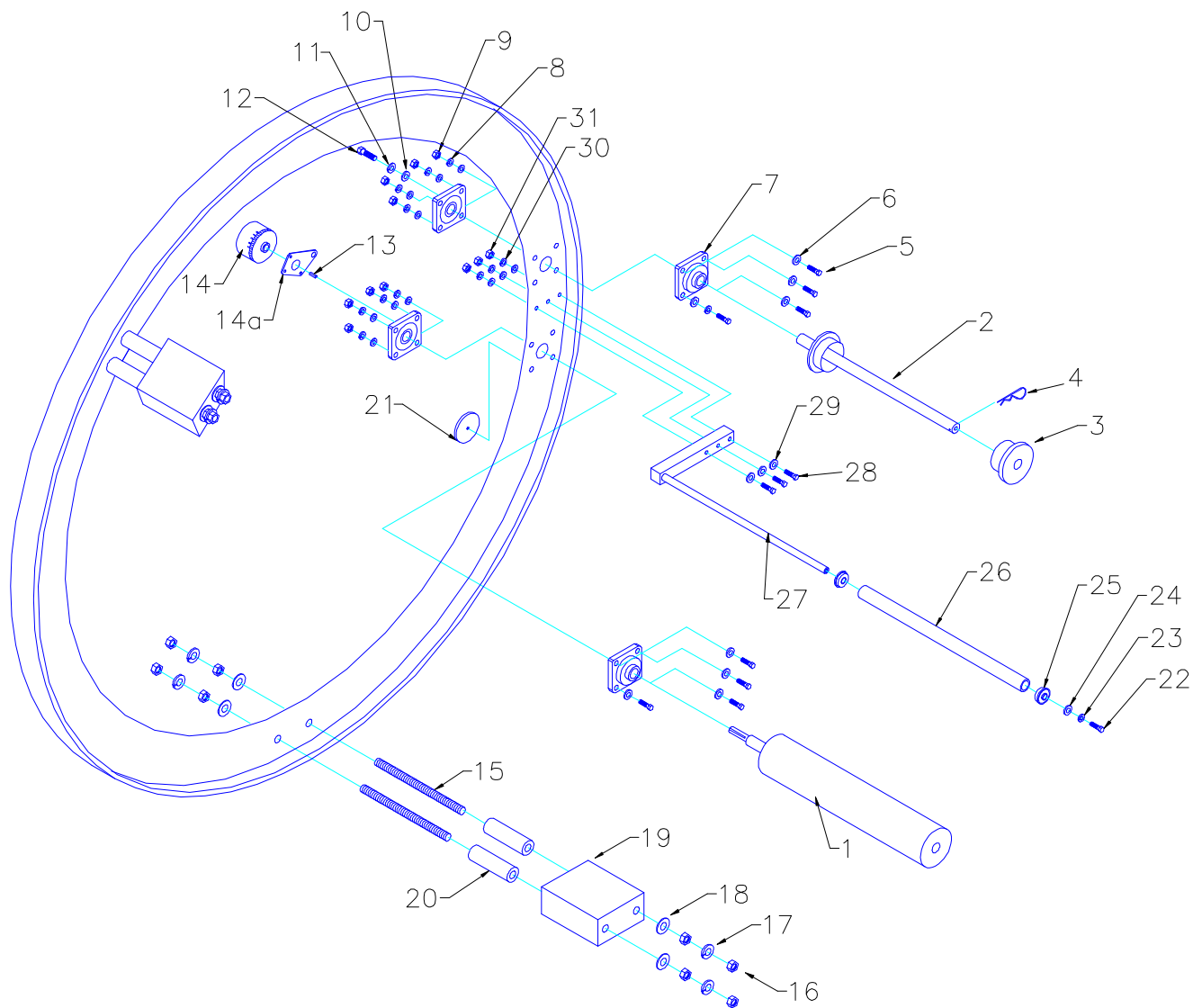
PARTS MANUAL: 800SAA-20 HORIZONTAL WINDER

ITEM	PART #	GRAINGER	DESCRIPTION	QTY
1	L48		5/16 USS WASHER	4
2	L47		5/16 LOCK WASHER	4
3	L54		5/16-18x 1-1/2" SET SCREW	4
4	121250	5X692	1" PILLOW BLOCK BEARING	2
5	L65		3/8 USS WASHER	4
6	L64		3/8 LOCK WASHER	4
7	L83		3/8-16x 1-1/2" HEX HEAD CAP SCREW	4
8	122809		10"x 3" DRIVE WHEEL w/ HUB	1
9	800V-DS		800V DRIVE SHAFT	1
10	L3		1/4"x 1/4"x 2-1/2" KEYWAY	1
11	L3		1/4"x 1/4"x 1" KEYWAY	1
12	108120		50BT20 DRIVEN SPROCKET	1
12	108132		1610x1" BUSHING	1
13	108500	6L074	# 50 CHAIN	1
14	122800		10"x 3" IDLER WHEEL w/ TAPERED BEARINGS	1
15	L96		7/16 USS WASHER	4
16	L95		7/16 LOCK WASHER	4
17	L99		7/16-14 x 1-1/2" HEX HEAD CAP SCREW	4
18	L73		3/8-24 x 1-1/2" ALLEN HEAD CAP SCREW	12
19	800SLIDE		800 SLIDE	6
20	L48		5/16 USS WASHER	12
21	L61		3/8-24 NYLOCK JAM NUT	12
22	L48		5/16 USS WASHER	12
23	L61		3/8-24 NYLOCK JAM NUT	12
24	800S-HOLDER		800 SLIDE HOLDER	6
25	L65		3/8 USS WASHER	12

PARTS MANUAL: 800SAA-20 HORIZONTAL WINDER

ITEM	PART #	GRAINGER #	DESCRIPTION	QTY
26	L64		3/8 LOCK WASHER	12
27	L71		3/8-24x 1-1/4" HEX HEAD CAP SCREW	12
28	L125		1/2-13 NUT	4
29	122851		1/2-13 RUBBER FEET	4
30	20990	1W926	14/3 SJ CORD	1
31	210340	2A247	CORD GRIP	1
32	105528		3hp 230v AC MOTOR 145TC FACE	1
33	107304		MOTOR BRAKE 230v 56C	1
34	L64		3/8 LOCK WASHER	4
35	L80		3/8-16 x 1" HEX HEAD CAP SCREW	4
36	106603		5:1 R/A REDUCER 2.0CD 140TC FACE	1
37	L3		1/4"x 1/4"x 1" KEYWAY	1
38	108118		50BT18 DRIVE SPROCKET	1
38	108132		1610x1" BUSHING	1
39	L82		3/8-16 x 1-1/2" HEX HEAD CAP SCREW	4
40	L64		3/8 LOCK WASHER	4
41	L65		3/8 USS WASHER	4
42	860FA12-MM		800 MOTOR MOUNT	1
43	L50		5/16-18 x 1" FLAT HEAD	4
44	213250		BANNER Q45 PKOTO-EYE	1
45	213180		BANNER T18 POLARIZED SENSOR	1
45	213261		CABLE FOR ABOVE	1
46	210852	2W938	LIMIT SWITCH (FILM DOOR)	1

Kalamazoo Packaging Systems Model #800SAA-RING Variable Tension Ring w/ Pined Top Core



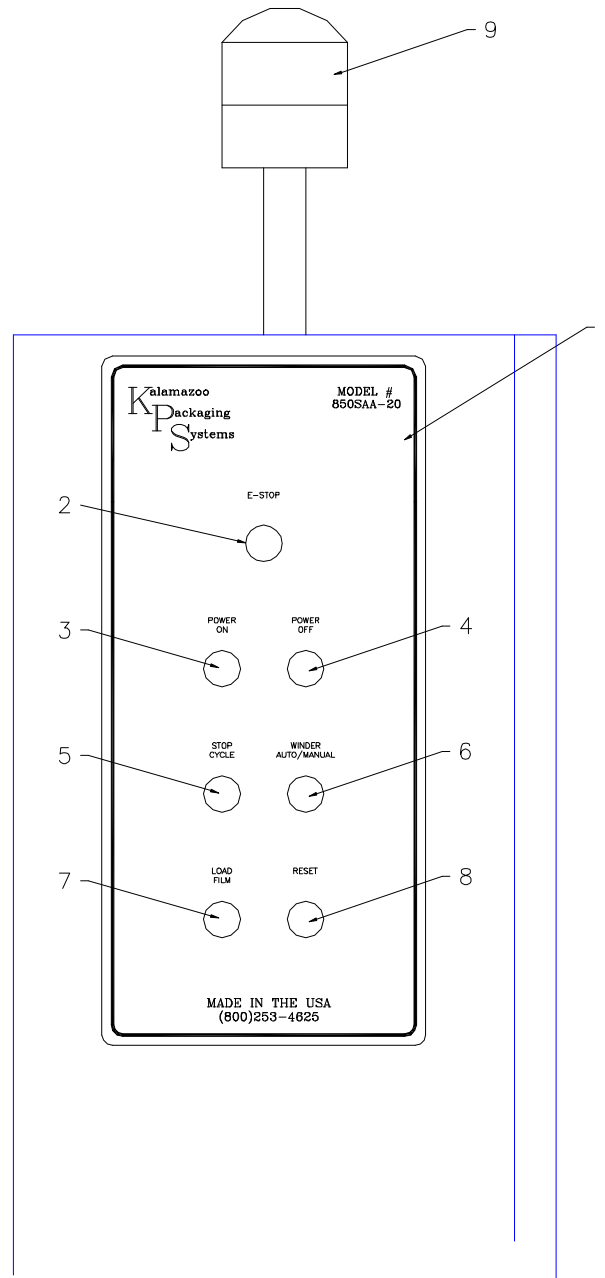
PARTS MANUAL: 800SAA-20 WINDER RING

ITEM	PART/DWG.#	DESCRIPTION	QTY
1	623070	4" DIA. x 12" WINDER VARIABLE TENSION BRAKE ROLLER	1
1	623074	4" DIA. x 20" WINDER VARIABLE TENSION BRAKE ROLLER	1
2	623072	12" WINDER VARIABLE TENSION FILM HOLDER w/ PINED TOP CORE	1
2	6	20" WINDER VARIABLE TENSION FILM HOLDER w/ PINED TOP CORE	1
3	623078	3" PLASTIC TOP CORE	1
4	623079	3/16" STEEL HITCH PIN CLIP	1
5	L102	7/16-20 x 2-1/4" HHCS	8
6	L97	7/16 SAE WASHER	16
7	121140	1" 4-BOLT FLANGE BEARING	4
8	L95	7/16 LOCK WASHER	8
9	L165	7/16-20 NYLOCK NUT	8
10	L111	1/2" USS WASHER	1
11	L110	1/2" LOCK WASHER	1
12	L128	1/2-13 x 1" HHCS	1
13	L2	3/16"x 3/16"x 3/4" KEYWAY	1
14	130550	5/8" FINISH BORE MAGNETIC BRAKE (MC 4)	1
14	130650	5/8" FINISH BORE MAGNETIC BRAKE (MC 5.5)	1
15	L162x11	3/4-10 x 11.0" THREADED ROD (12" FILM)	4
15	L162x19.5	3/4-10 x 19.5" THREADED ROD (20" FILM)	4

PARTS MANUAL: 800SAA-20 WINDER RING

ITEM	PART #/DWG. #	DESCRIPTION	QTY
16	L157	3/4-10 NUT	16
17	L158	3/4" LOCK WASHER	8
18	L159	3/4" USS WASHER	8
19	800CW-12	COUNTER WEIGHT (12" FILM)	2
19	800CW-20	COUNTER WEIGHT (20" FILM)	2
20	800CW-20	COUNTER WEIGHT SPACERS (20" FILM ONLY)	4
21	212383	3" PHOTO-EYE REFLECTOR	1
22	L80	3/8-16x 1" HHCS	1
23	L64	3/8" LOCK WASHER	1
24	L65	3/8" USS WASHER	1
25	120600	5/8" I.D. x 1-3/8" O.D. FLANGED BEARING	2
26	537125	PVC 1-1/4 TUBE sch.40 x 13-3/8" (12" FILM)	1
26	537125	PVC 1-1/4 TUBE sch.40 x 21-3/8" (20" FILM)	1
27	623075	12" BRAKE IDLER ROLLER MOUNT	1
27	623077	20" BRAKE IDLER ROLLER MOUNT	1
28	L57	5/16-18x 2" HHCS	3
29	L48	5/16 USS WASHER	6
30	L47	5/16" LOCK WASHER	3
31	L45	5/16-18 NYLOCK NUT	3

Kalamazoo Packaging Systems
Model # 800SAA-20
Control Cabinet



PARTS MANUAL: 800SAA PUSH BUTTONS

ITEM	PART #	DESCRIPTION	QTY
1	DECAL 850SAA-20	850SAA-20 CONTROL DECAL	1
2	207110	PUSH OFF/ TURN TO RESET (E-STOP)	1
3	207069	GREEN LIGHTED PUSH BUTTON (POWER ON)	1
4	207050	RED MUSHROOM BUTTON (POWER OFF)	1
5	207055	RED PUSH BUTTON (STOP CYCLE)	1
6	207100	2-POS. SELECTOR (WINDER AUTO/MANUAL)	1
7	207056	BLUE PUSH BUTTON (FILM LOAD)	1
8	207057	WHITE PUSH BUTTON (RESET)	1
9	206482	50mm STACK LIGHT KIT (YELLOW, GREEN)	1

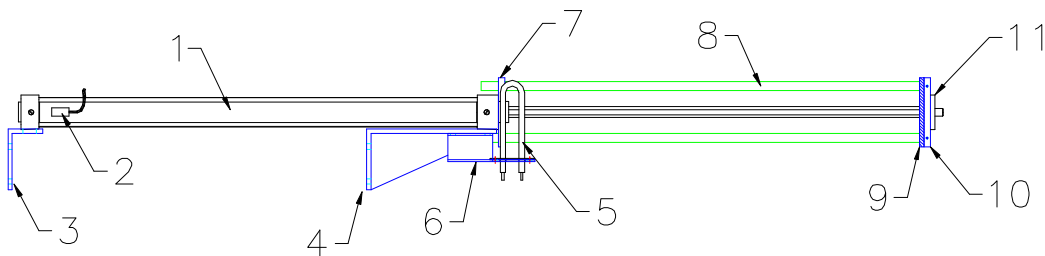
**PARTS MANUAL:
850SAA-20 HORIZONTAL WINDER SUB-PANEL**

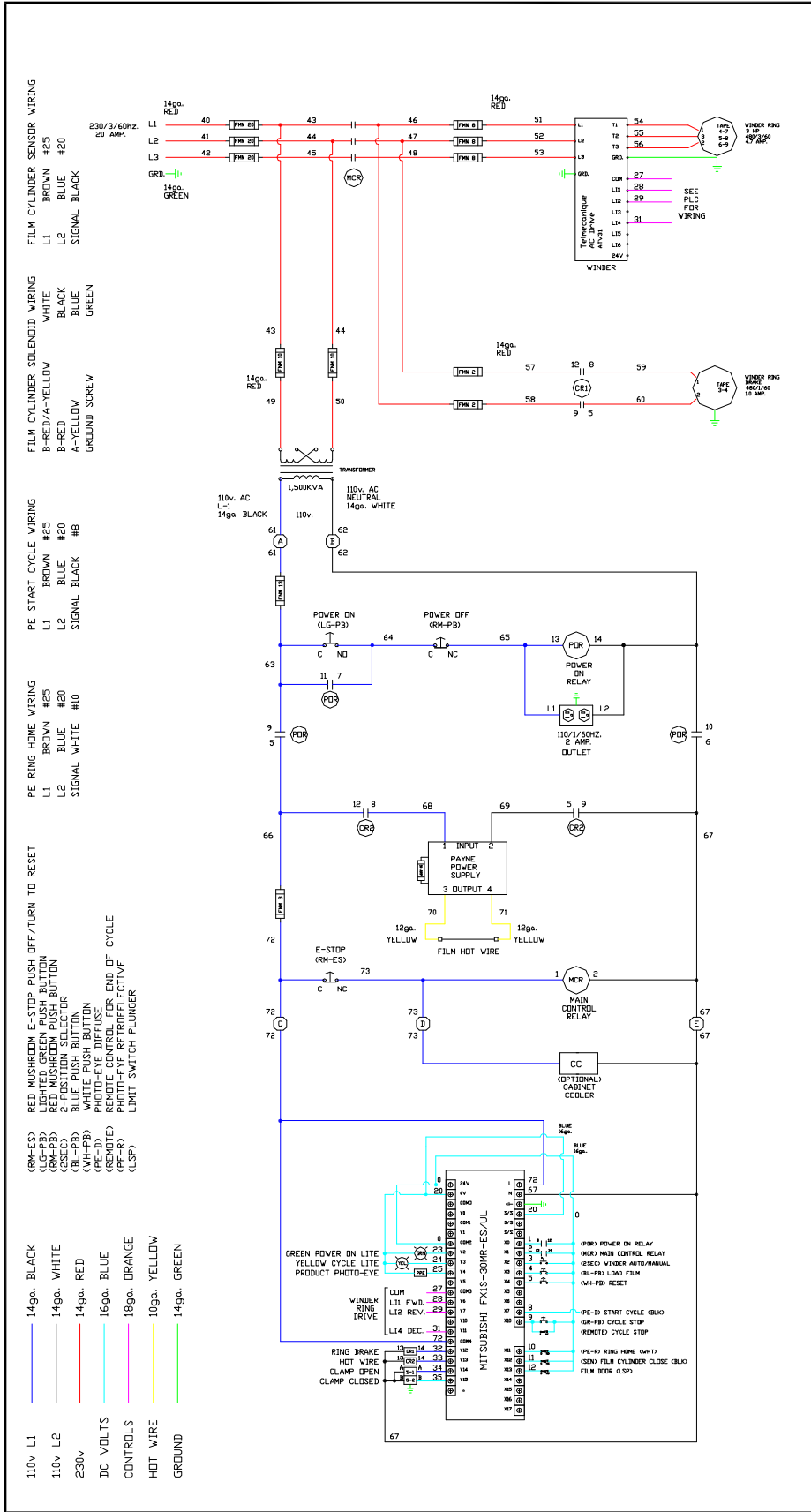
ITEM	PART#	DESCRIPTION	QTY
1	211031	3 AMP BREAKER (PLC)	1
2	220177	mitsubishi PLC FX1s-30	1
3	131010	REMOTE RECEIVER	1
3	131011	HAND HELD TRANSMITTER (NOT SHOWN)	1
4	208250 208260	2PDT 10 AMP RELAY (HOT WIRE) ^ 8-PIN BASE	1 1
5	131201	PAYNE CONTROLLER (HOT WIRE)	1
6	211022	2 AMP. 2-POLE BREAKER (WINDER RING BRAKE)	1
7	208250 208260	2PDT 10 AMP RELAY (WINDER BRAKE) ^ 8-PIN BASE	1 1
8	208450 208460	4PDT 10 AMP RELAY (POWER ON RELAY) ^14-PIN BASE	1 1
9	208090	40 AMP. MAIN CONTROL RELAY	1
10	211203	20 AMP. 3-POLE BREAKER (MAIN)	1 3
11	210744	40 AMP DISCONNECT	1
12	211083	8 AMP. 3-POLE BREAKER (WINDER)	1
13	131875	3hp AC DRIVE (TELEMECANIQUE)	1
14	211121	12 AMP. BREAKER (SECONDARY)	1
15	209108	1500VA TRANSFORMER	1
16	211102	10 AMP. 2-POLE BREAKER (PRIMARY)	1
17	210155	120/1/60Hz. OUTLET	1
18	209700	12 TERMINAL STRIP	3

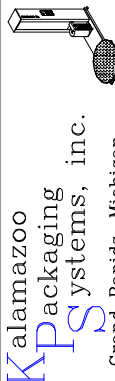
PARTS MANUAL: 800SAA-20 FILM HOLDER AND CUTTER

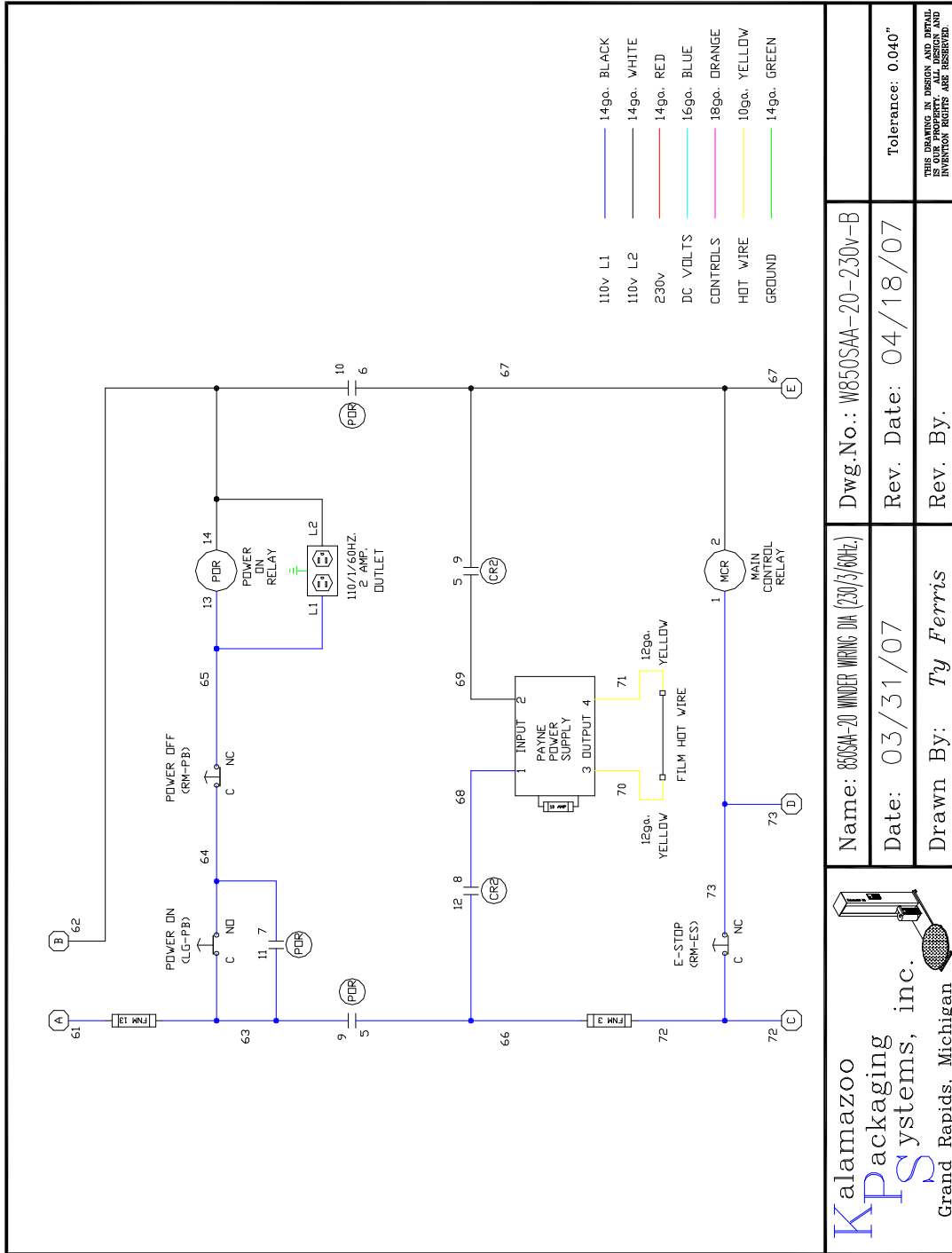
ITEM	PART # / DWG. #	DESCRIPTION	QTY
1	270130	CUTTER CYLINDER 1-1/2" BORE x 24" STROKE	1
2	270131 270132	FILM CUTTER LIMIT SWITCH FILM CUTTER LIMIT SWITCH BAND	1
3	850SAA-20-AFC-02	FILM CYLINDER BACK MOUNT	1
4	850SAA-20-AFC-01	FILM CYLINDER FRONT MOUNT	1
5	131009	4-1/2" TUBE HOT WIRE	1
6	800-AFC-09zo	HOTWIRE MOUNTING BRACKET	1
7	250081	4-ROD FILM CYLINDER ROD MOUNT	1
8	800071	5/8" TEFLON SHAFT x 26.0"	4
9	250084	1/4"x 4-1/4"x 2-3/8" FOAM RUBBER	1
10	250082	4-ROD FILM CYLINDER FRONT PLATE	1
11	250083	4 ROD CYLINDER END CAP	1

Kalamazoo Packaging Systems
Film Holder and Hotwire
Model# 800SAA-20





Name: 850SAA-20 WINDER WIRING DIA. (230/3/60Hz)		Dwg.No.: W850SAA-20-230v	Tolerance: 0.040"
Date: 03/30/07		Rev. Date: 04/18/07	
Drawn By: Ty Ferris		Rev. By:	
 Kalamazoo Packaging Systems, inc. Grand Rapids, Michigan			

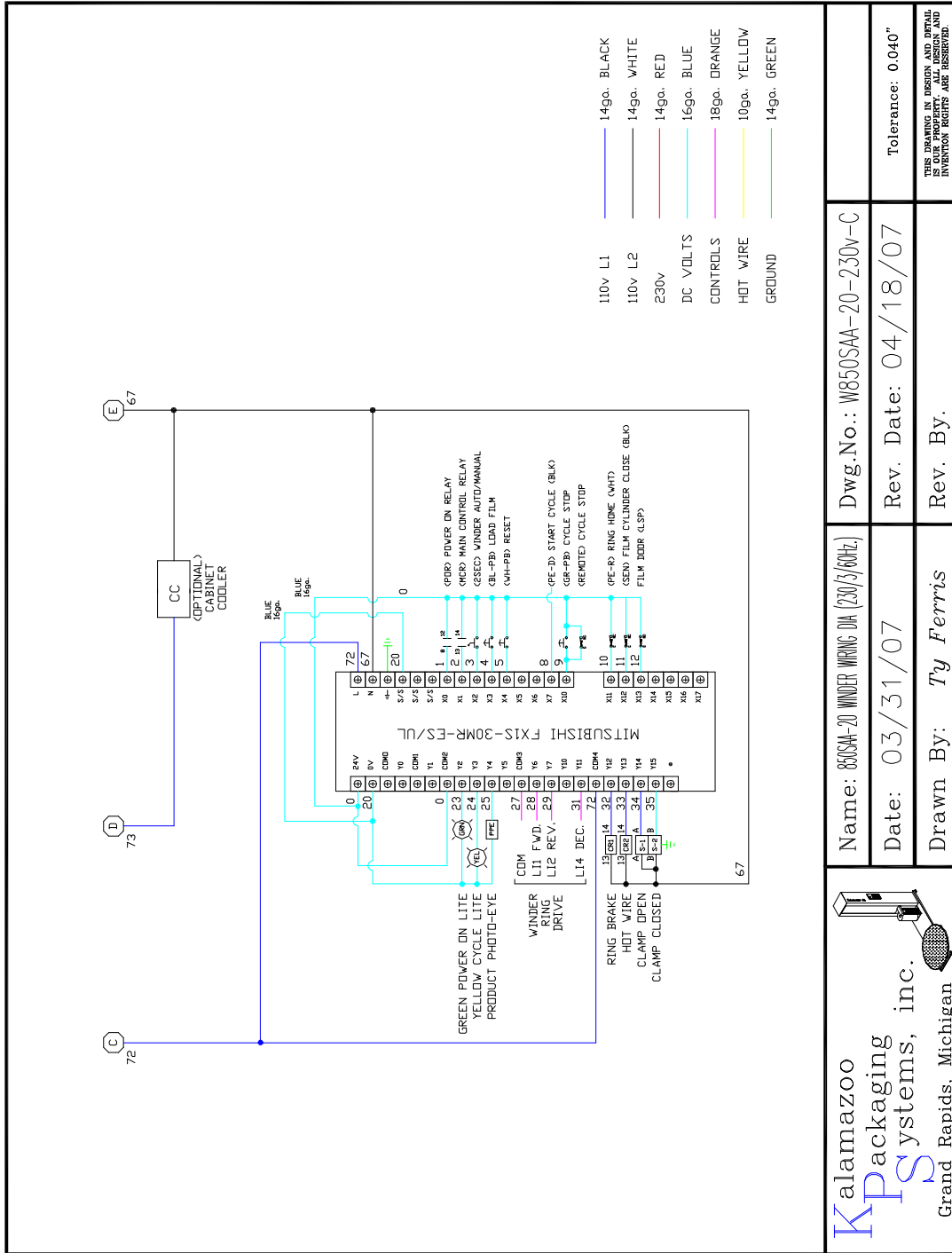


Kalamazoo
Packaging
Systems, inc.
 Grand Rapids, Michigan

Name: 850SAA-20 WINDER WIRING DIA (230V/60HZ)
 Date: 03/31/07
 Drawn By: Ty Ferris

Dwg.No.: W850SAA-20-230v-B
 Rev. Date: 04/18/07
 Rev. By:
 Tolerance: 0.040"

THIS DRAWING IN DESIGN AND DETAIL
 AND INVENTION RIGHTS ARE RESERVED.



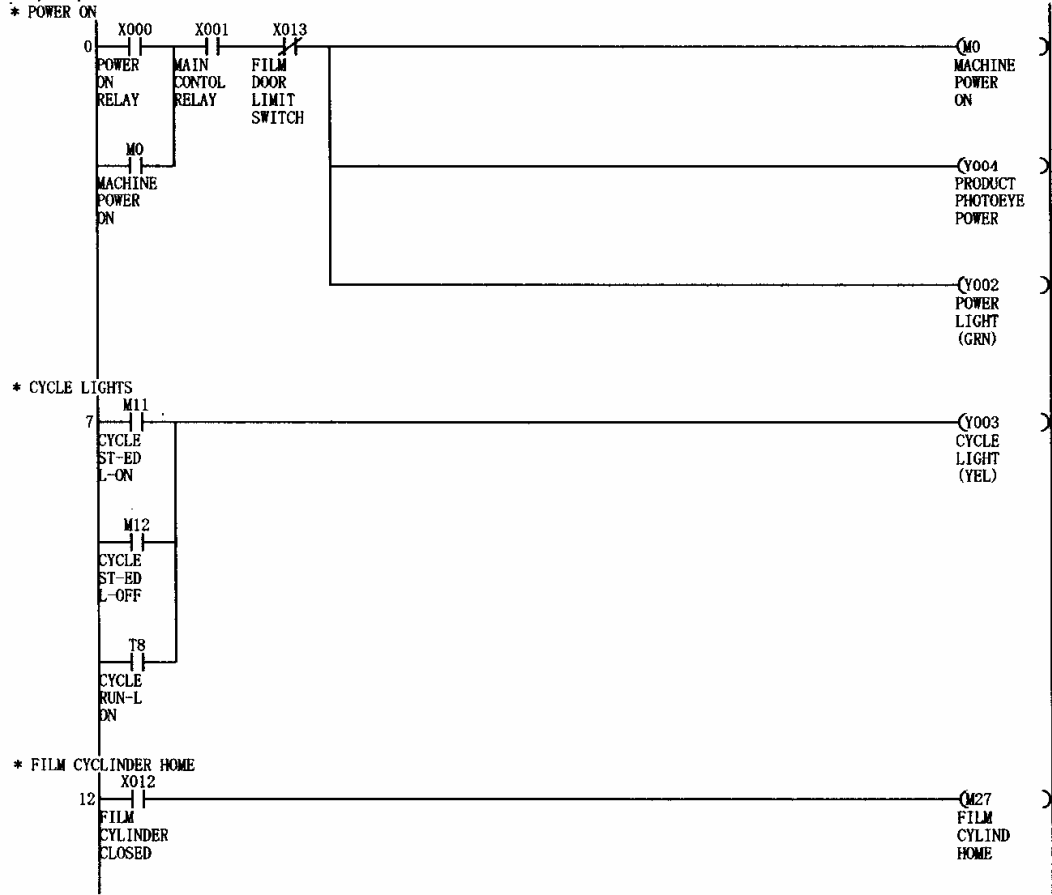
Kalamazoo Packaging Systems, inc.
Grand Rapids, Michigan

Name: 850SAA-20 WINDER WINDING DA (230/3/60Hz)
Date: 03/31/07
Drawn By: Ty Ferris

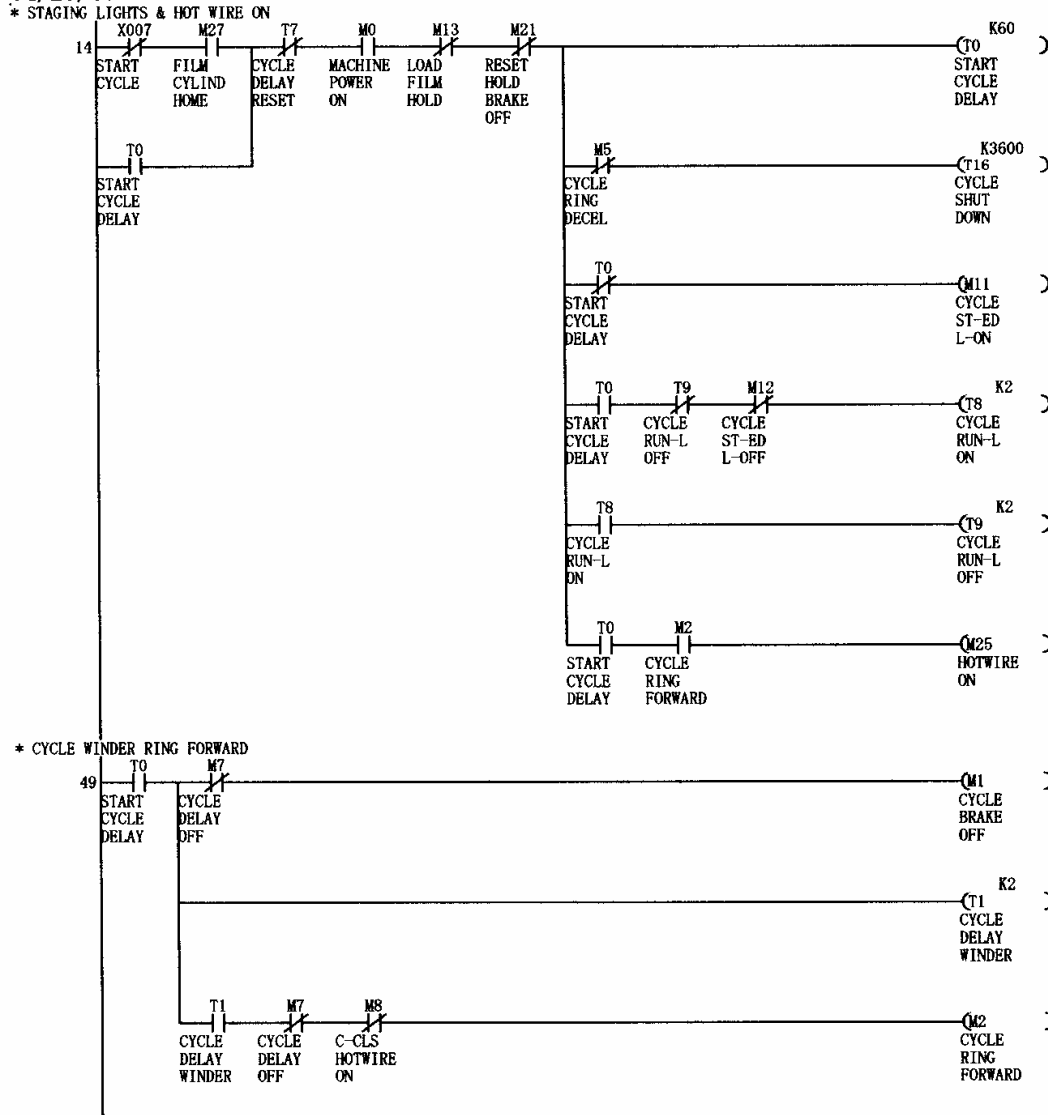
Dwg.No.: W850SAA-20-230V-C
Rev. Date: 04/18/07
Rev. By:
Tolerance: 0.040"

THIS DRAWING IN DESIGN AND DETAIL AND INVENTION RIGHTS ARE RESERVED.

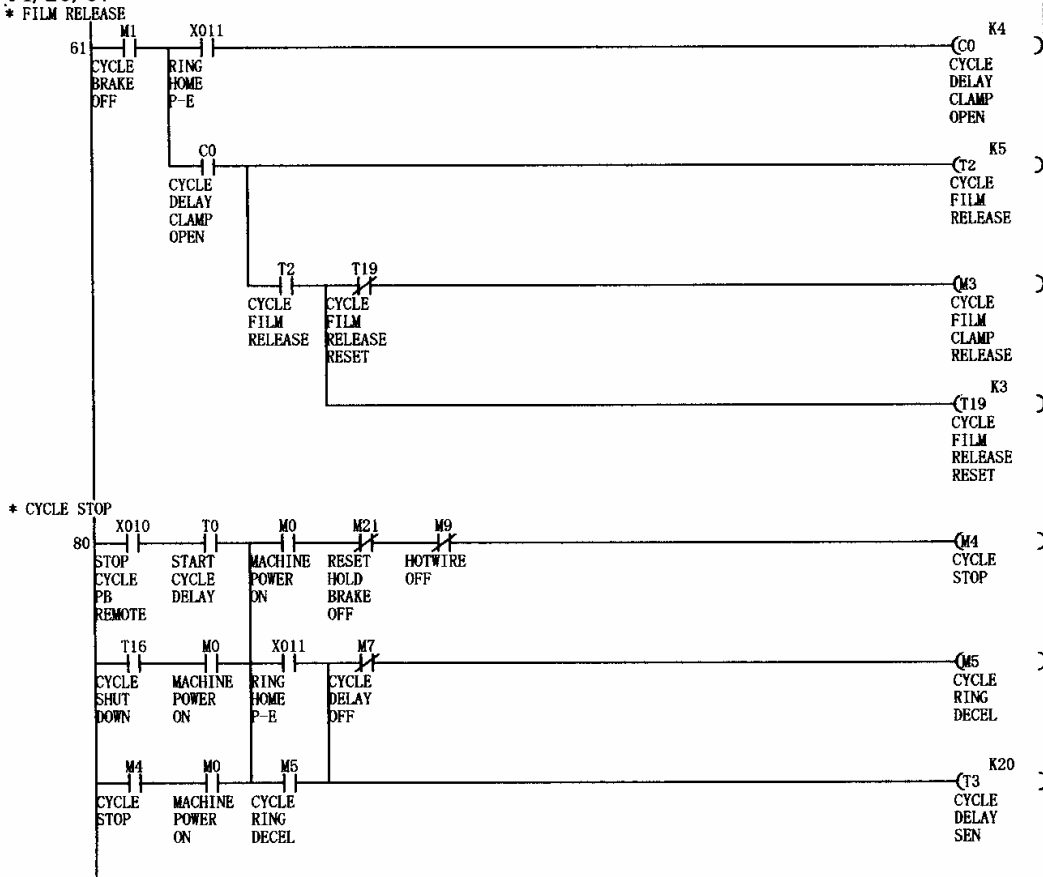
Kalamazoo
 Packaging
 Systems
 Model# 850SAA-20
 Stand Alone Automatic Winder
 04/20/07



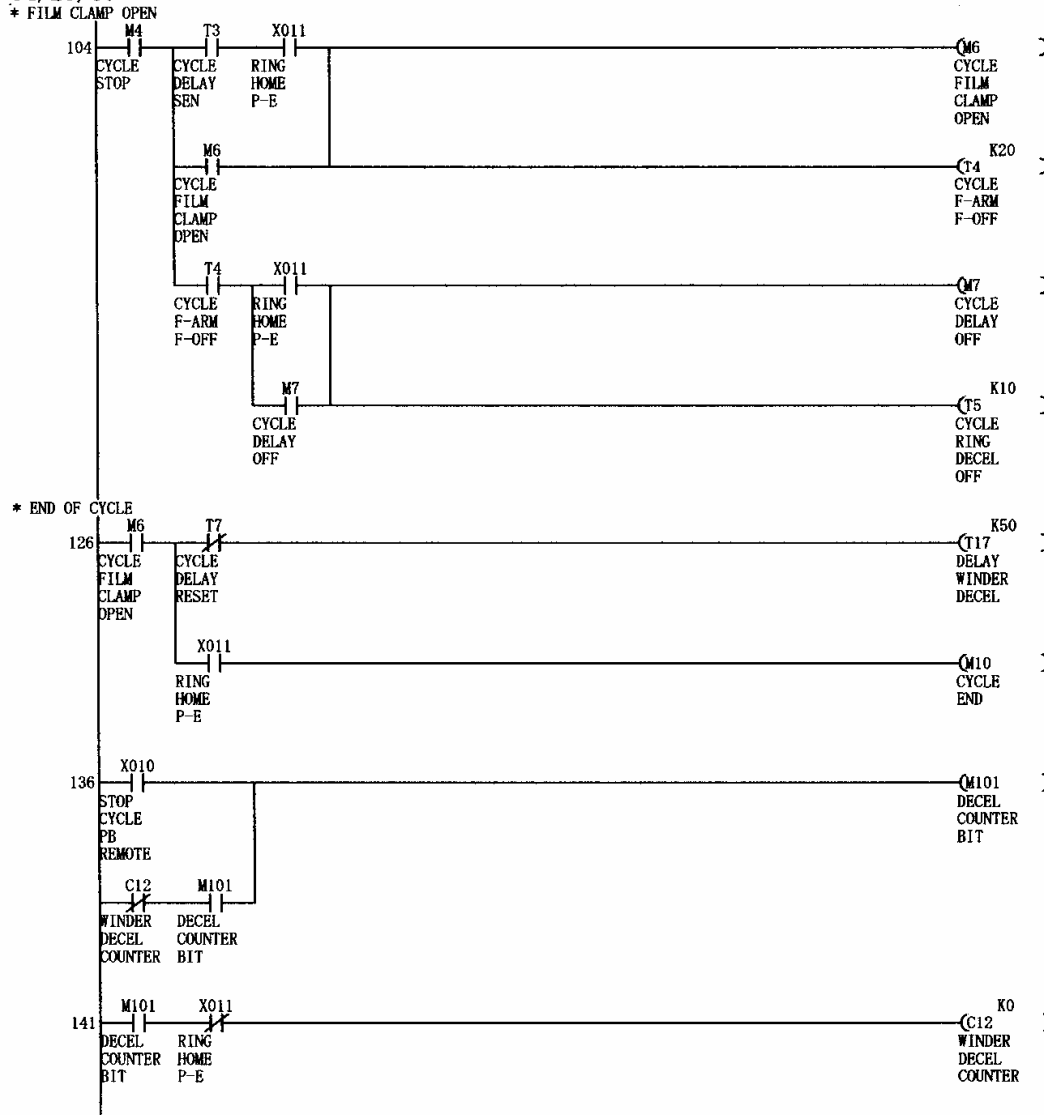
Kalamazoo
 Packaging
 Systems
 Model# 850SAA-20
 Stand Alone Automatic Winder
 04/20/07



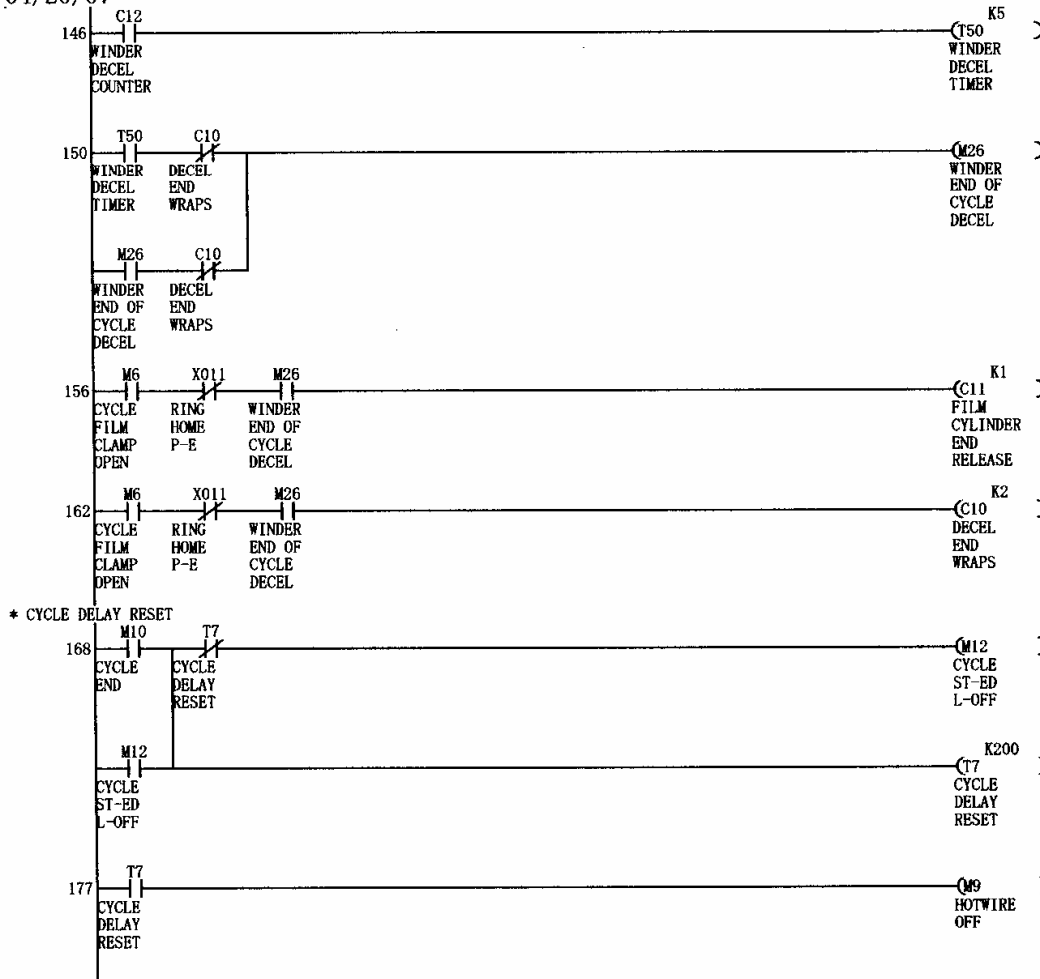
Kalamazoo
 Packaging
 Systems
 Model# 850SAA-20
 Stand Alone Automatic Winder
 04/20/07
 * FILM RELEASE



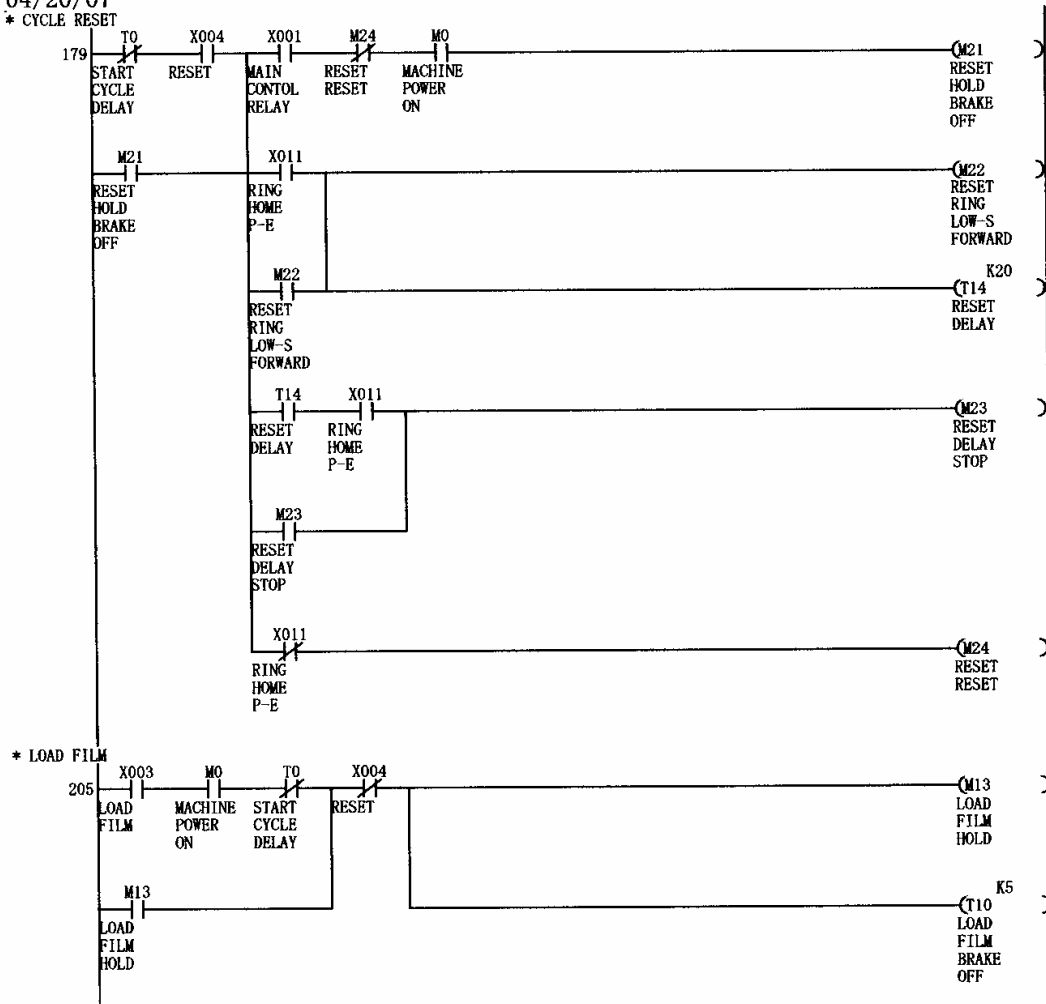
Kalamazoo
 Packaging
 Systems
 Model# 850SAA-20
 Stand Alone Automatic Winder
 04/20/07



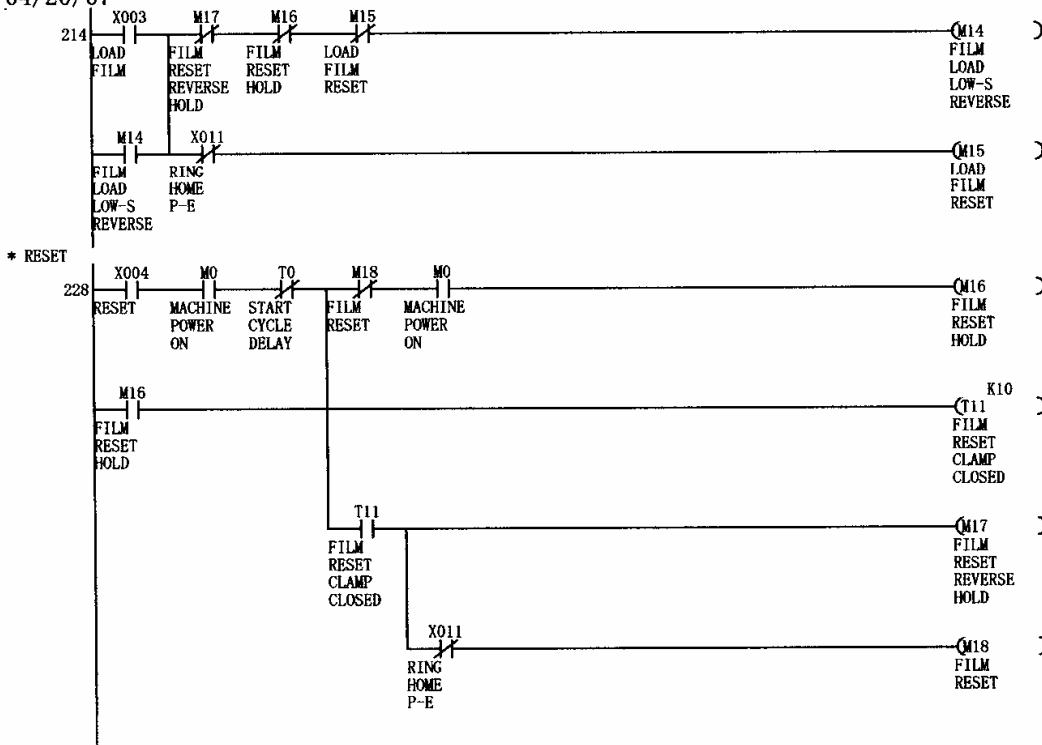
Kalamazoo
Packaging
Systems
Model# 850SAA-20
Stand Alone Automatic Winder
04/20/07



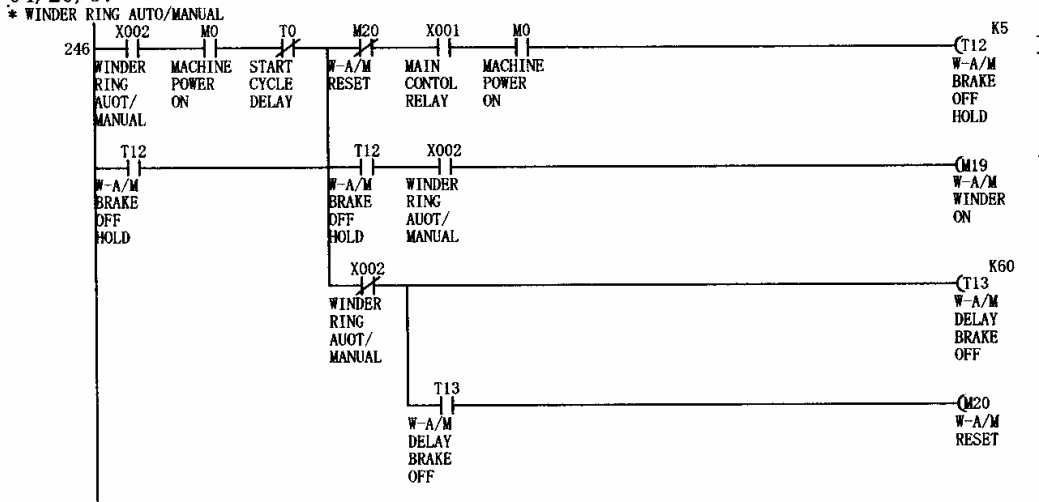
Kalamazoo
Packaging
Systems
Model# 850SAA-20
Stand Alone Automatic Winder
04/20/07
* CYCLE RESET



Kalamazoo
 Packaging
 Systems
 Model# 850SAA-20
 Stand Alone Automatic Winder
 04/20/07

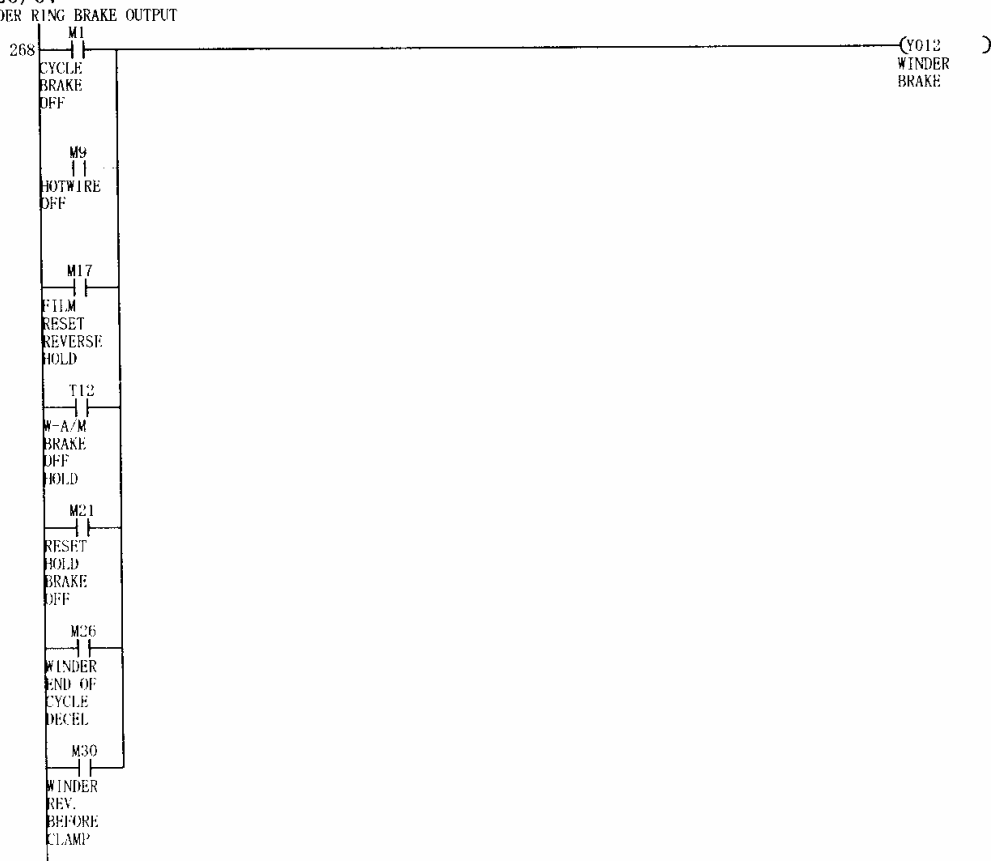


Kalamazoo
 Packaging
 Systems
 Model# 850SAA-20
 Stand Alone Automatic Winder
 04/20/07

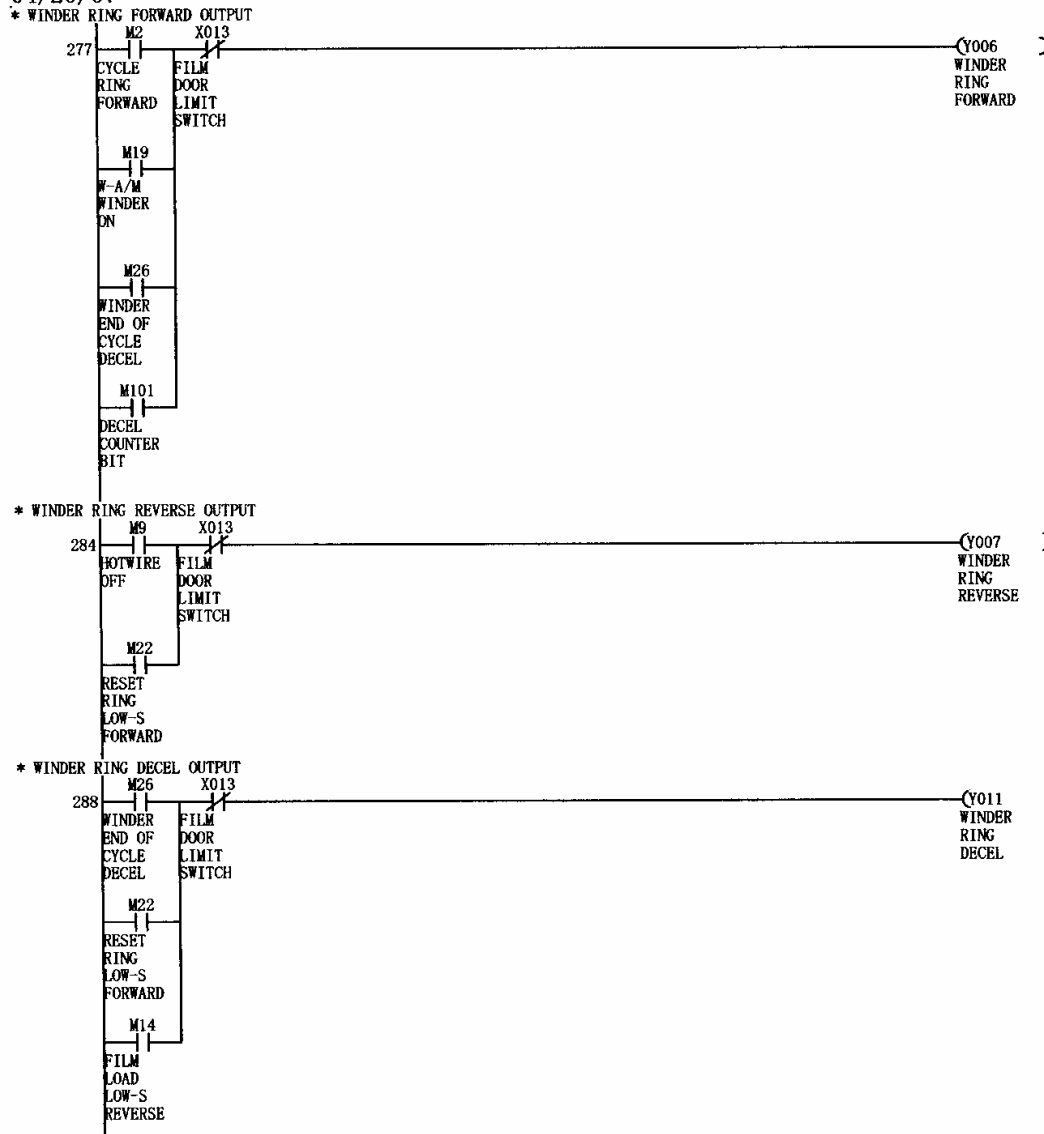


Kalamazoo
 Packaging
 Systems
 Model# 850SAA-20
 Stand Alone Automatic Winder
 04/20/07

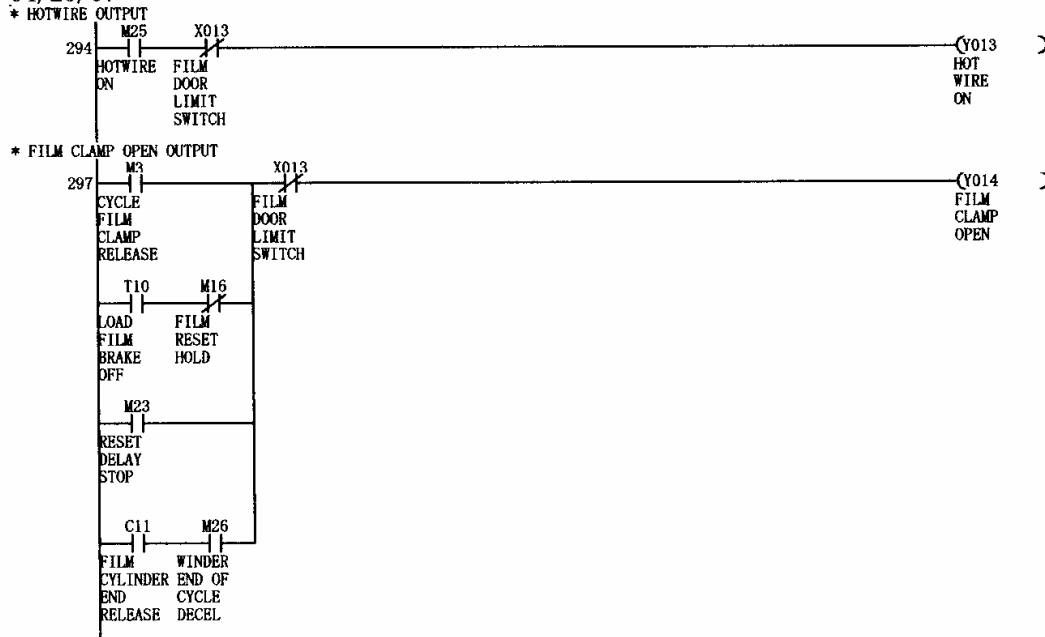
* WINDER RING BRAKE OUTPUT



Kalamazoo
 Packaging
 Systems
 Model# 850SAA-20
 Stand Alone Automatic Winder
 04/20/07



Kalamazoo
 Packaging
 Systems
 Model# 850SAA-20
 Stand Alone Automatic Winder
 04/20/07



Kalamazoo
 Packaging
 Systems
 Model# 850SAA-20
 Stand Alone Automatic Winder
 04/20/07

