

**SERIES 850FA-12-C48**  
**FULLY-AUTOMATIC WINDER STRETCH**  
**WRAP SYSTEM WITH CONVEYORS**



**OPERATORS**  
**MANUAL**

## Table of

# Contents

---

Warranty.....	3
Assembly.....	4
Loading Film.....	4-5
Controls.....	5
Operating Instructions.....	6
Maintenance.....	7
Adjustments .....	7
Trouble Shooting.....	8
RPM and Drive Programming.....	9
AC Drive Programming.....	10-11
Parts Lists .....	12-29
Wiring Diagram .....	30-34
PLC Programming.....	35-48

---

## Introduction

Congratulations! Your purchase of a Kalamazoo Series 800 Horizontal Winder Stretch Wrap System will provide you with years of efficient stretch wrapping service. Your investment will ensure that your products will arrive cleaner, with less damage and pilferage at their destination at a lower cost to you.

Kalamazoo Packaging Systems products carry a LIMITED LIFETIME WARRANTY on all K.P.S. manufactured components; all parts not manufactured by Kalamazoo Packaging Systems will be subject to the original manufacturer's warranty.

### *Warranty*

Kalamazoo Packaging systems, Inc. (KPS) agrees to furnish the purchaser, without charge, F.O.B. the factory, any part found to be defective in either material or workmanship within one (1) year from date of shipment, provided the purchaser gives immediate notice of any defect and description of that defect to KPS. KPS reserves the right to inspect any defective part to verify the defect and to determine probable cause of same.

The liability of KPS under this warranty is limited to furnishing replacements for defective parts, and unless otherwise agreed to in writing, the purchaser shall bear the expense of installation.

Failure of equipment or parts due to abuse, misuse, neglect, incorrect operating techniques or power line drops or surges shall not constitute failure because of defective material or workmanship, and are expressly excluded from this warranty.

The above is the only warranty with no other guarantees which extend beyond the above and the seller disclaims any implications including but not limited to a warranty of merchantability.

# Assembly

Your Horizontal Winder has been assembled and tested at our manufacturing plant and released for shipment by a qualified technician. If the unit was shipped via common carrier or by our truck it may not be crated. **Any damage done in transit should be reported to the carrier immediately.** All our shipments are sent F.O.B. Grand Rapids, Michigan, therefore; the customer is responsible to settle any damage claims with the transportation company. Kalamazoo Packaging Systems will do everything possible to assist you in these matters.

Place the Winder in it's location.

Move the input conveyor into place and install the locking pins.

(the input conveyor is installed on the same side as the film door on the winder)

Wire in the input conveyor into the control cabinet.

Plug in the air supply.

Move the output conveyor into place and install the locking pins.

(the output conveyor is installed on the opposite side as the film door on the winder)

Wire in the output conveyor into the control cabinet.

Wire in the Winder into the control cabinet.

Wire in the main power drop cord 230/3/60hz. into the control cabinet.

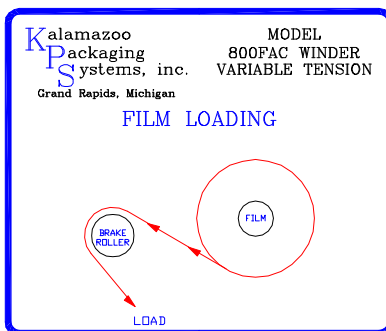
(see wiring diagram. )

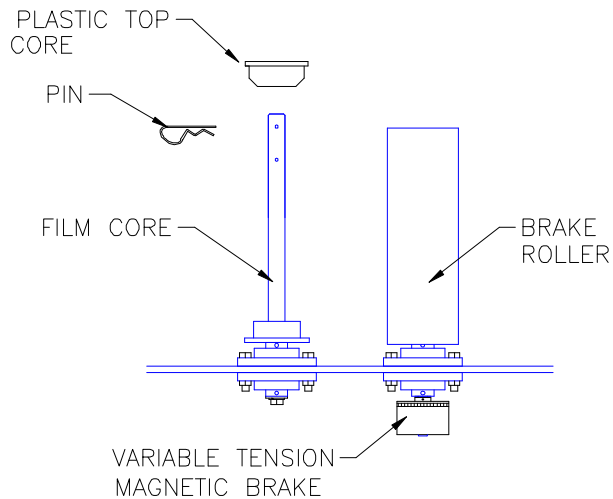
Air Source required 80 P.S.I.

The System is now ready for operation.

## **Loading Film**

Your wrapper is equipped with a Kalamazoo Variable Tension Film Delivery System. Place a roll of 20" stretch film on the film core holder and thread the film as shown on the diagram below. Once the film is loaded and the desire film tension is arrived at the film tension need not be adjusted again until the brand of film or the film thickness is changed.





#### FILM LOADING AND TENSIONING

Place a roll of 20" film onto the film holder so the film unwinds clockwise, then slide the plastic top core into place and install the pin into the hole.

(note: The film core does not change the film tension.)

Thread the film as shown on the diagram.

Adjust the variable tension magnetic brake to the film tension you desire. Loosen the two set screws in the brake with a 5/64" allen wrench adjust the tension and retighten the set screws.

## OPERATING CONTROLS

- 1 **POWER ON:** Green lighted push button; turns on the machine power and lights up the button.
- 2 **POWER OFF:** Red push button; turns off the machine power.
- 3 **EMERGENCY STOP:** Red (push off/ turn to reset); turns off all motors, air cylinders and hot wire.
- 4 **CYCLE STOP:** Red mushroom push button; stops the wrap cycle.
- 5 **CYCLE START:** Green push button starts; the wrap cycle.
- 6 **LOAD FILM:** Blue push button; opens the film cutter air cylinder.
- 7 **RESET:** White push button; reset the machine. Moves the winder ring to home, Closes the film cutter, and moves the hold downs up.
- 8 **WINDER RING Auto/Manual:** 2-position selector switch; Manually runs the Winder ring. Disengaged in the wrap cycle program.
- 9 **IN CONV. FWD/AUOT/REV:** 3-position selector switch; Manually runs the Input conveyor and runs the Lift conveyor when it is in the up position. Disengaged in the wrap cycle program.
- 10 **OUT CONV. FWD/AUOT/REV:** 3-position selector switch; Manually runs the Output conveyor. Disengaged in the wrap cycle program.
- 11 **INPUT LIFT CONV. RAISE/AUOT/LOWER:** 3-position selector switch; Manually runs the input lift cylinder. Disengaged in the wrap cycle program.

( If the Winder and/or Conveyors are in the manual mode the system will not cycle start )

# OPERATING INSTRUCTIONS

## **START UP**

- 1 Turn the control cabinet disconnect to ON.
- 2 Check to make sure you have 80 P.S.I. air to the machine.
- 3 Push the Power On Green lighted push button. The green power on light will come on.

## **FILM LOADING**

- 1 Push the blue Load Film button. (The film holder will open)
- 2 Open the film door and load the film pre the diagram on page #4.
- 3 Pull the film out and lay it across the film holder.
- 4 Close the film loading door.
- 5 Push the Power On button ( the Power On button will light up.)
- 6 Push the white Reset button. (The film holder will close.)
- 7 The system is now ready for the first load.

## **WRAP CYCLE**

- 1 Push the Cycle Enable button. (The system is now ready to run )
- 2 Load the window onto the input lift conveyor. Make sure window is in the center of the conveyor.
- 3 Turn the input lift selector switch to raise.
- 4 After the window is in the horizontal position push the window onto the input belt conveyor and in front of the photo-eye.
- 5 The input belt conveyors will come on and move the window into the Winder.
- 6 The Winder will automatically start wrapping the window
- 7 The input and output conveyors will come on and move the product through the Winder.
- 8 Once the back edge of the window clears the input photo-eye you can lower the input lift. and the next window can be loaded.
- 9 After the window is wrapped the film will be automatically cut..
- 10 After the film is cut the output conveyor will come on and remove the window from the Winder.
- 11 End of wrap cycle.

# GENERAL MAINTENANCE

**Warning!!**

**MAKE SURE THAT POWER SUPPLY AND AIR SUPPLY IS DISCONNECTED BEFORE ATTEMPTING TO SERVICE ANY COMPONENTS. IF THE POWER DISCONNECT OR AIR DISCONNECT IS OUT OF SIGHT, LOCK IT IN THE OPEN POSITION AND TAG IT TO PREVENT UNEXPECTED APPLICATION OF POWER.**

---

## Cleaning

Periodically clean dirt accumulations from machine, especially around moving parts and drive components, preferably by vacuuming.

---

## General

- Check and tighten any loose fasteners.
  - Check all electric connections and replace any worn or frayed cords.
  - Check all fuses and AC controllers.
  - Make sure the air is on.
- 

## Lubrication

### Bearings

- The bearings have been greased at the factory and are ready to run. It is recommended that all mounted bearings and support wheels be relubricated with #3 lithium base grease every three months.

### Chains

- Clean, lubricate and adjust chains every month. Chain should be lubricated with a penetrating type commercial chain lube.

### Gear Reducers

- For new reducers, change the oil 120 hours after the reducer starts operating (based on 8 hours per day of operation). After the first oil change, change oil every 2000 operating hours, or every six months, whichever occurs first.

Temperature	Lubricant
25° - 125° F	AGMA #8
15° - 60° F	AGMA #7

*Certain conditions (dust, water, etc.) may require a change of lubricating periods as dictated by experience.*

---

## adjustments

This is automatic system. Do not make adjustments without contacting Kalamazoo Packaging Systems.

# TOUBLESHOOTING

When any problem develops, review the operating instructions. Diagnose specific problems and review the options below.

Machine not running at all.

1. Check wall receptacle for power.
2. Check power cord for cut. (Fork Lift Trucks damage cords.)
3. Check all fuses.
4. Check the air supply.
5. Check AC drive for faults.
6. Check all limit switches and sensors for damage, sticking or internal shorts.
7. Open cabinet and check that all relays are firmly seated in their bases.
8. Visually inspect for loose wires and for any signs of arcing or burning of any of the components.
9. The film door must be shut before the winder will run.
10. Winder ring noises, use taping wax around ring edge.
11. It is advisable to call for technical assistance at this time. (616) 534-2600.

**Technical and Customer Service is available from Kalamazoo Packaging Systems, Inc., Monday thru Friday 7:30 A.M. to 4:00 P.M. (EST). Stock is maintained on parts to allow us to ship the same day on most orders.**

**If you have a problem, we want to know about it! Please call and report any difficulties you may encounter.**

- **Local - (616) 534-2600**
- **National - (800) 253-4625**

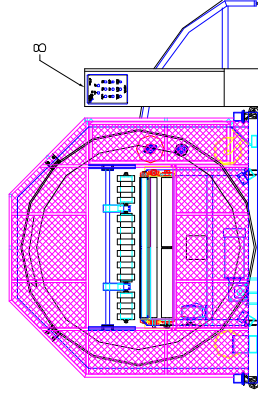
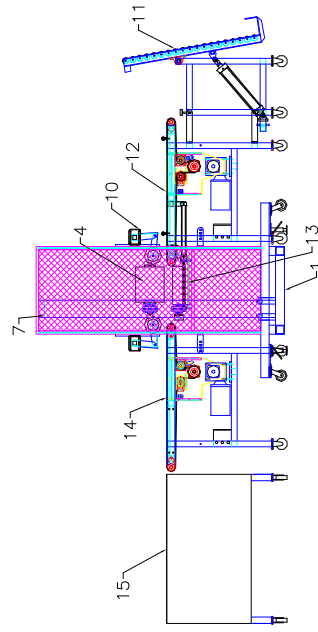
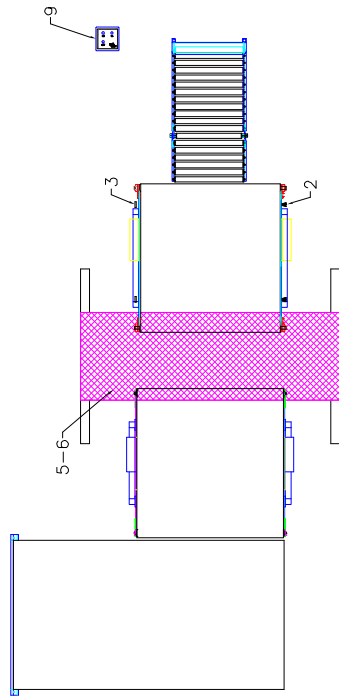
## **850FA-12-C48 Telemecanique AC Drive Programming**

### **Winder**

**Acc. 2.5**  
**Dec. 1.0**  
**SFr 2.0**  
**tCC. 2C**  
**Sp2 8HZ**  
**STA 15**  
**rFr ENTER**  
**TUN YES**

### **Conveyors**

**Acc. 0.1**  
**Dec. 0.1**  
**SFr. 2.0**  
**tCC. 2C**  
**STA 10**  
**rFr ENTER**  
**TUN YES**



**Kalamazoo**  
**PS** Packaging Systems, inc.  
 Grand Rapids, Michigan

Name: 800HC-12 FULLY-AUTOMATIC HORIZONTAL INNER / COMETERS

Date: 08/04/99

Drawn By: Ty Ferris

Dwg.No.: 10-800HA-12-CAS-C/Reorder-Schedule

Rev. Date: 08/23/06

Rev. By.

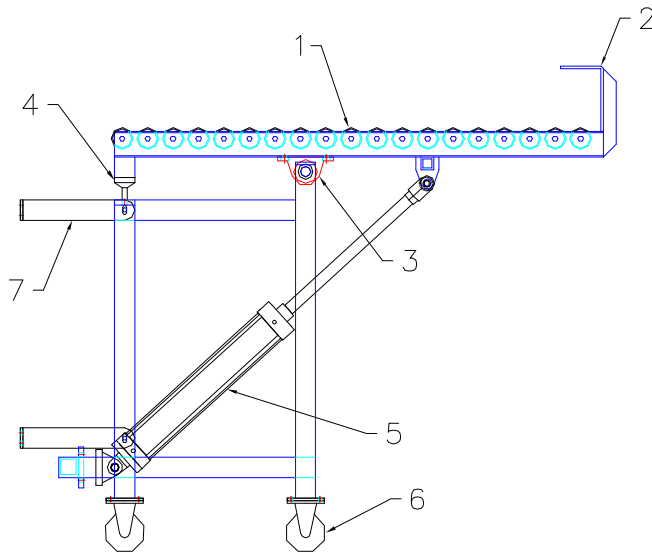
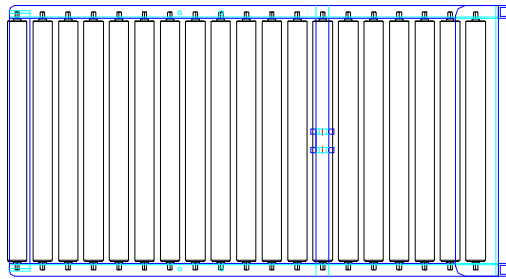
Tolerance:  
 X = :1/32 XX = :01 XXX = :003

THIS DRAWING IN DESIGN AND DETAIL IS OUR PROPERTY. ALL DESIGN AND INVENTION RIGHTS ARE RESERVED.

# PARTS MANUAL: 850FA-12-C48 LAYOUT

ITEM	PART/DWG.#	DESCRIPTION	PAGE#	QTY
1		WINDER BASE FRAME	17-20	1
2	213180	PHOTO-EYE POLARIZED 10-30v DC		2
3	212381	2.2" PHOTO-EYE REFLECTOR		2
4		12" VARIABLE TENSION FILM HEAD	21-22	1
4		10-12" FILM CORE w/ PIN	21-22	1
5	213180	PHOTO-EYE POLARIZED 10-30v DC		1
6	212383	3" PHOTO-EYE REFLECTOR		1
7		WINDER RING	21-22	1
8		CONTROL CABINET	23-24	1
8		SUBPANEL	25-26	1
9		START CONSOLE	27	
10		PRODUCT HOLD DOWNS	28	1
11		INPUT LIFT	12-13	1
12		INPUT CONVEYOR	1416	1
13		FILM HOLDER AND HOT WIRE	29	1
14		OUTPUT CONVEYOR	30-32	1
15	850STD-C41	850 SLIDE TABLE DROP	33	1

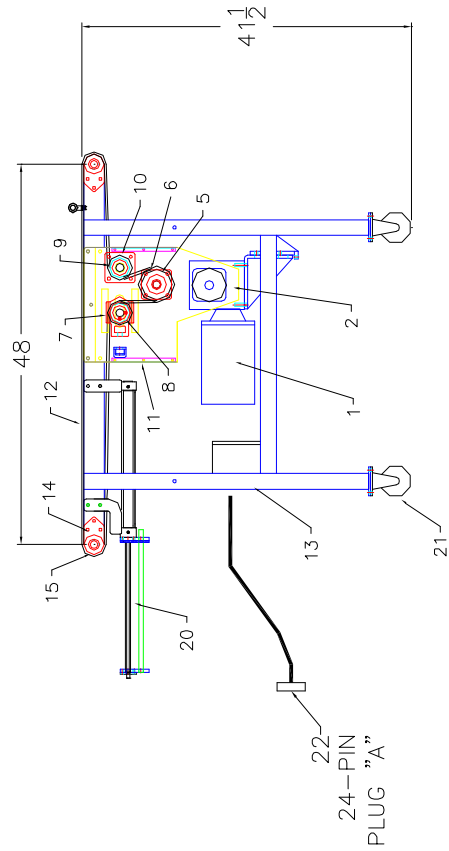
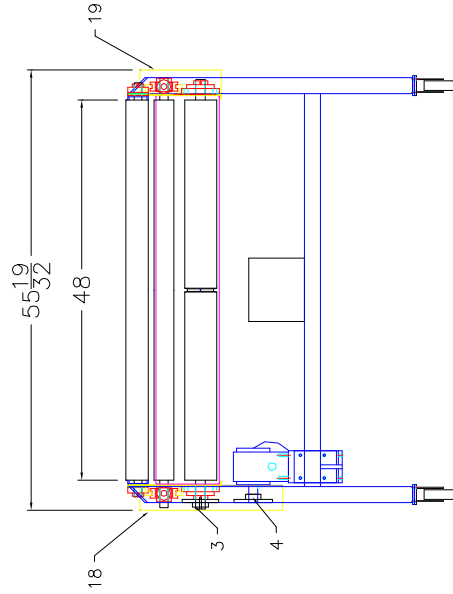
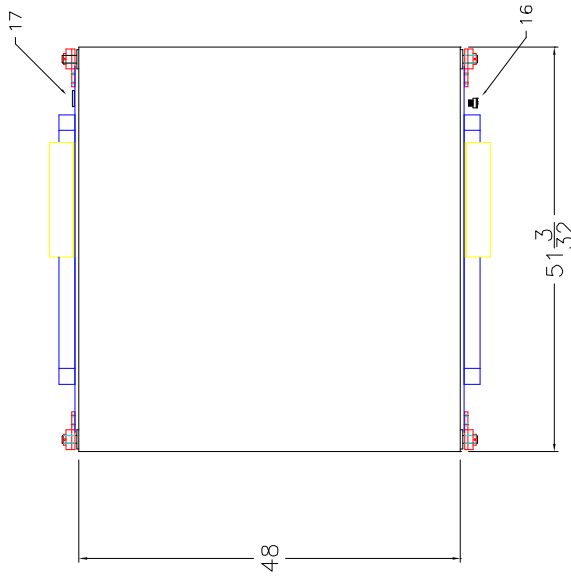
Kalamazoo  
Packaging  
Systems  
Model # 824-GREL  
INPUT LIFT 24" GRAVITY  
ROLLER EZLOADR



**Kalamazoo Packaging Systems**  
**PARTS MANUAL: 824GREL INPUT LIFT GRAVITY**  
**ROLLER CONVEYOR EZLOADER**

<b>ITEM</b>	<b>PART #</b>	<b>GRAINGER</b>	<b>DESCRIPTION</b>	<b>QTY</b>
1	824GREL-12		1.9" DIA. GRAVITY ROLLER 24"	19
2	824GREL-09		24" WDIE EZLOADER FRAME	1
3	121240		1" PILLOW BLOCK	2
4	122851		2" RUBBER FOOT	2
5	280000		LIFT CYLINDER 3-1/4"x 16"	1
6	122200		4"x 1-1/4" TOTAL LOCK SWIVEL CASTER	2
6	122202		4"x 1-1/4" RIGID CASTER	2
7	824GREL-07		EZLOADER MOUNTING BRACKET	4

Kalamazoo  
Packaging  
Systems  
Model # 848PB48-41-I  
Input Conveyor Layout

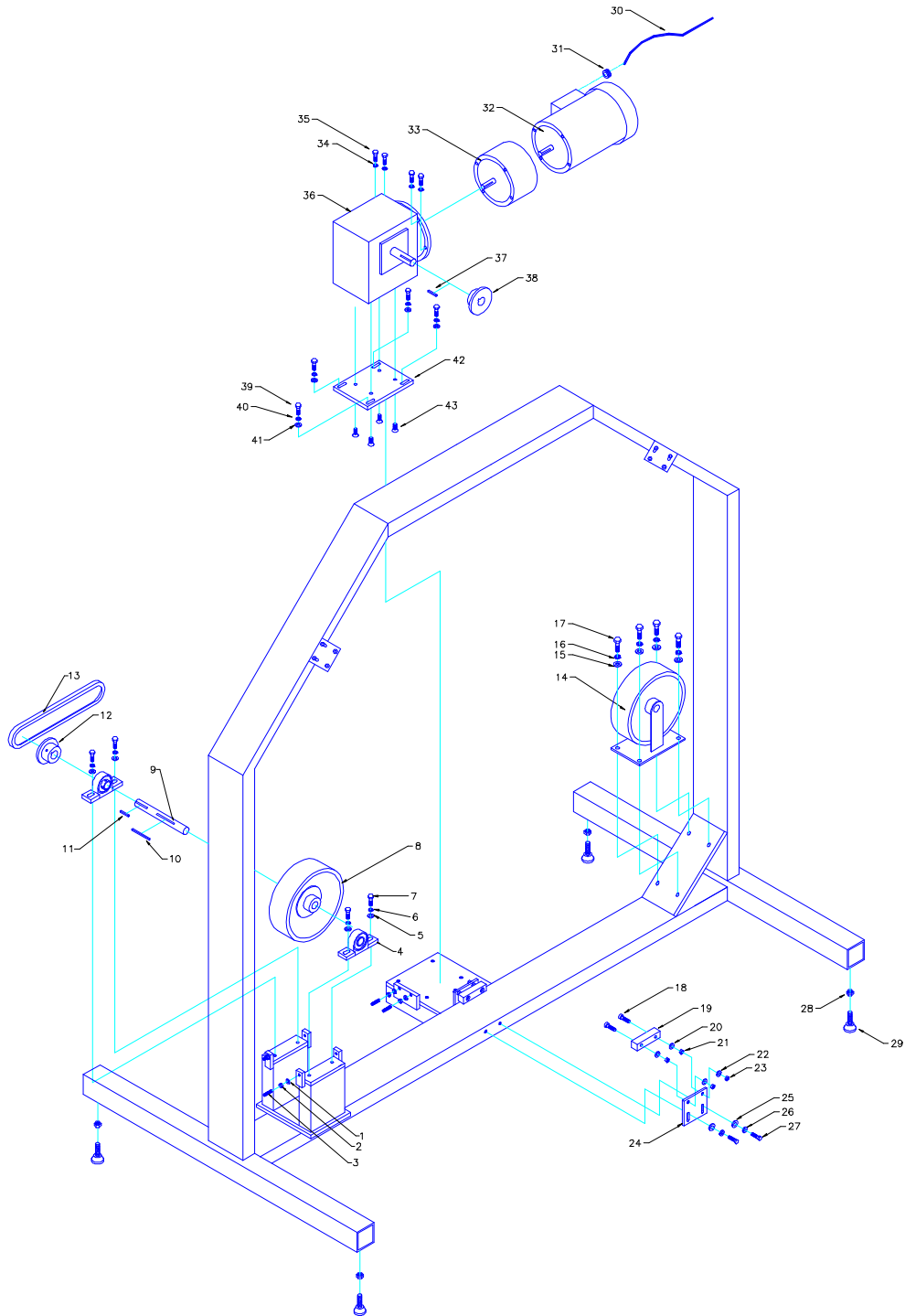


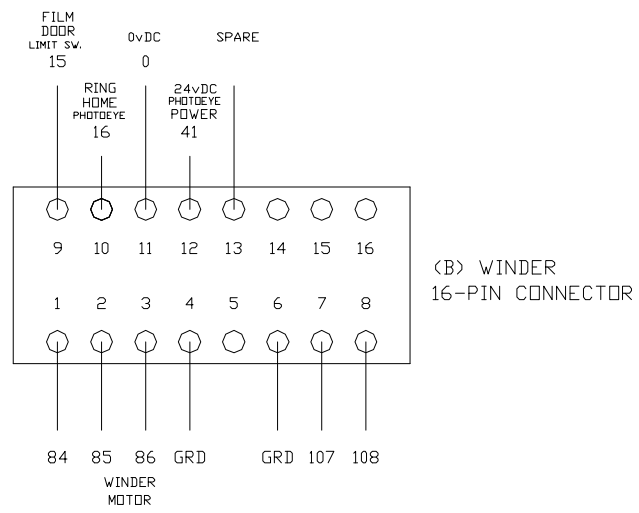


**Kalamazoo Packaging Systems**  
**PARTS MANUAL: 848PB48-41-I**  
**INPUT POWERED BELT CONVEYOR**

ITEM	PART #	GRAINGER	DESCRIPTION	QTY
1	105313		1/2HP. 230-460/3/60HZ. AC MOTOR 56C FACE	1
2	106625		BOSTON R/A REDUCER 40:1 2.38CD 56C FACE	1
3	108031		DRIVE SPROCKET 50B18x1-1/8"	1
4	108050		DRIVEN SPROCKET 50B20x1"	1
5	121150	5X701	1-1/4" 4-BOLT FLANGE BEARING	2
6	848PB48-17		848PB 4" DRIVE ROLLER	1
7	848PB48-15		848PB 2-1/2" TAKE-UP ROLLER	1
8	121066	1L604	1-1/4" TAKE-UP BEARING	2
9	848PB48-14		848PB 2-1/2" IDLER ROLLER	1
10	121140		1" 4-BOLT FLANGE BEARING	2
11	848PB48-08		848PB DRIVE ROLLER END COVER	2
12	848PB48-BELT		848PB48-BELT (BLACK RUFF TOP)	1
13	848PB48-41		848PB48-41 BASE FRAME	1
14	121054		1" CHEVRON BEARING	4
15	848PB48-13		848PB 2-1/2" END ROLLER	2
16	213180		BANNER T18 POLARIZED SENSOR	2
16	213181		BANNER BRACKET	2
16	213257		4-PIN CABLE	2
17	213182		2" REFLECTOR	2
17	213181		BANNER BRACKET	2
18	848PB48-05		DRIVE SIDE GUARD	1
19	848PB48-06		DRIVEN SIDE GUARD	1
20			FILM HOLDER and CUTTER (page 25)	1
21	122200		4"x 1-1/4" TOTAL LOCK SWIVEL CASTER	2
21	122202		4"x 1-1/4" RIGID CASTER	2
22	210312		24-PIN QUICK CONNECTOR (COMPLETE)	1

# Kalamazoo Packaging Systems Model #800v w/ MOTOR BRAKE Horizontal Winder Base





## PARTS MANUAL: 800V HORIZONTAL WINDER

ITEM	PART #	GRAINGER	DESCRIPTION	QTY
1	L48		5/16 USS WASHER	4
2	L47		5/16 LOCK WASHER	4
3	L54		5/16-18x 1-1/2" SET SCREW	4
4	121250	5X692	1" PILLOW BLOCK BEARING	2
5	L65		3/8 USS WASHER	4
6	L64		3/8 LOCK WASHER	4
7	L83		3/8-16x 1-1/2" HEX HEAD CAP SCREW	4
8	122809		10"x 3" DRIVE WHEEL w/ HUB	1
9	800V-DS		800V DRIVE SHAFT	1
10	L3		1/4"x 1/4"x 2-1/2" KEYWAY	1
11	L3		1/4"x 1/4"x 1" KEYWAY	1
12	108122		DRIVEN SPROCKET 50BTL22	1
12	108215		1" BUSHING FOR ABOVE	1
13	108500	6L074	# 50 CHAIN	1
14	122800		10"x 3" IDLER WHEEL w/ TAPERED BEARINGS	1
15	L96		7/16 USS WASHER	4
16	L95		7/16 LOCK WASHER	4
17	L99		7/16-14 x 1-1/2" HEX HEAD CAP SCREW	4
18	L73		3/8-24 x 1-1/2" ALLEN HEAD CAP SCREW	12
19	800SLIDE		800 SLIDE	6
20	L48		5/16 USS WASHER	12
21	L61		3/8-24 NYLOCK JAM NUT	12
22	L48		5/16 USS WASHER	12
23	L61		3/8-24 NYLOCK JAM NUT	12
24	800S-HOLDER		800 SLIDE HOLDER	6
25	L65		3/8 USS WASHER	12

## PARTS MANUAL: 800V HORIZONTAL WINDER

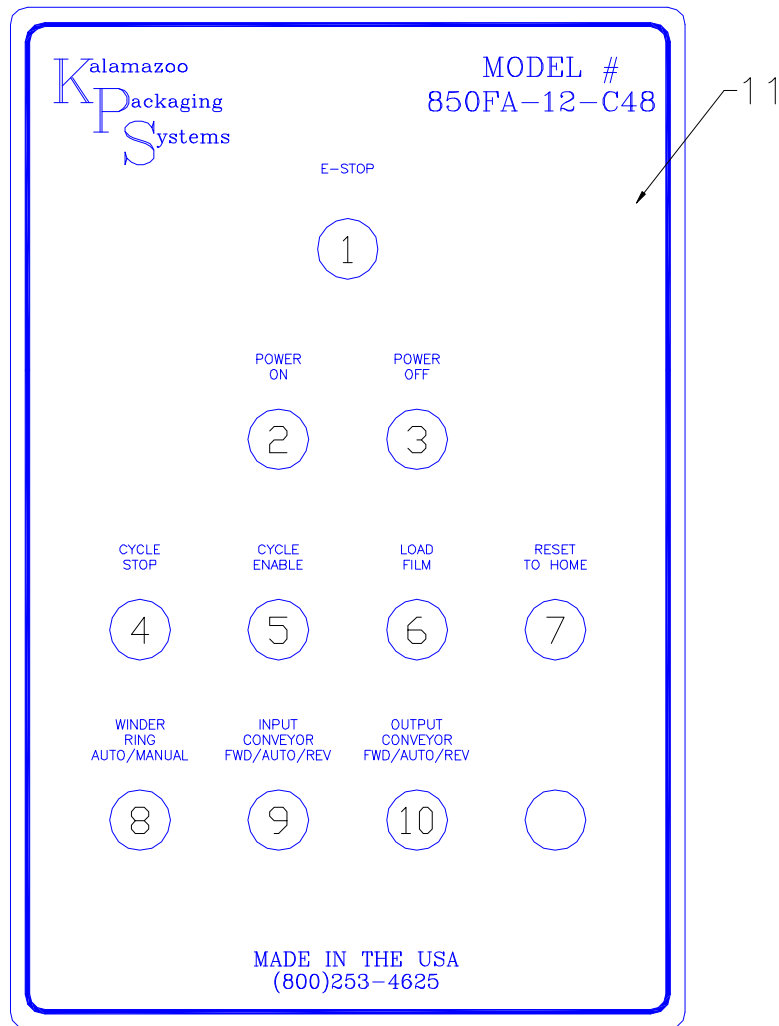
ITEM	PARTS #	DESCRIPTION	QTY
26	L64	3/8 LOCK WASHER	12
27	L71	3/8-24x 1-1/4" HEX HEAD CAP SCREW	12
28	L125	1/2-13 NUT	4
29	122851	1/2-13 RUBBER FEET	4
30	20990	14/3 SJ CORD	1
31	210340	CORD GRIP	1
32	105529	2hp 230/3/60hz H.D. WINDER MOTOR 56C FACE	1
33	107304	MOTOR BRAKE 230v 56C	1
34	L64	3/8 LOCK WASHER	4
35	L80	3/8-16 x 1" HEX HEAD CAP SCREW	4
36	106604	5:1 R/A REDUCER 2.06CD 56C FACE (WINDER)	1
37	L3	1/4"x 1/4"x 1" KEYWAY	1
38	108122	DRIVE SPROCKET 50BLT21	1
38	108132	1" BUSHING FOR ABOVE	1
39	L82	3/8-16 x 1-1/2" HEX HEAD CAP SCREW	4
40	L64	3/8 LOCK WASHER	4
41	L65	3/8 USS WASHER	4
42	850FAC-12-MM	800 MOTOR MOUNT	1
43	L50	5/16-18 x 1" FLAT HEAD	4



## PARTS MANUAL: WINDER RING

ITEM	PART/DWG.#	DESCRIPTION	QTY
1	800-12-BR	WINDER 12" VARIABLE TENSION BRAKE ROLLER	1
2	800-12-CORE-P	WINDER 12" VARIABLE TENSION FILM HOLDER w/ PINED TOP CORE	1
3	800-20-CORE-PC	3" PLASTIC TOP CORE	1
4	623079	3/16" STEEL HITCH PIN CLIP	1
5	L102	7/16-20 x 2-1/4" HHCS	8
6	L95	7/16 LOCK WASHER	8
7	L97	7/16 SAE WASHER	8
8	121140	1" 4-BOLT FLANGE BEARING	4
9	L165	7/16-20 NYLOCK NUT	8
10	L111	1/2" USS WASHER	1
11	L110	1/2" LOCK WASHER	1
12	L128	1/2-13 x 1" HHCS	1
13	L2	3/16"x 3/16"x 3/4" KEYWAY	1
14	130550	5/8" FINISH BORE MAGNETIC BRAKE (MC 4)	1
15	L162	3/4-10 x 11.0" THREADED ROD	7
16	L157	3/4-10 NUT	16
17	L158	3/4" LOCK WASHER	8
18	L159	3/4" USS WASHER	8
19	800CW-12	COUNTER WEIGHT	1

Kalamazoo Packaging Systems  
Model #850FA-12-C48  
Control Cabinet Decal



## PARTS MANUAL: 850FA-12-C48 CONTROL CABINET

ITEM	PART #	DESCRIPTION	QTY
1	207110	PUSH OFF/ TURN TO RESET (E-STOP)	1
2	207069	GREEN LIGHTED PUSH BUTTON (POWER ON)	1
3	207055	RED BUTTON (POWER OFF)	1
4	207050	RED MUSHROOM PUSH BUTTON (CYCLE STOP)	1
5	207001	GREEN PUSH BUTTON (CYCLE START)	1
6	207056	BLUE PUSH BUTTON (FILM LOAD)	1
7	207057	WHITE PUSH BUTTON (RESET)	1
8	207100	2-POS. SELECTOR (WINDER AUTO/MANUAL)	1
9	207103	3-POS. SELECTOR (IN CONV. FWD/AUTO/REV)	1
10	207103	3-POS. SELECTOR (OUT CONV. FWD/AUTO/REV)	1
11	850FA-12-C48 DECAL	850FA-12-C48 CONTROL CABINET DECAL	1



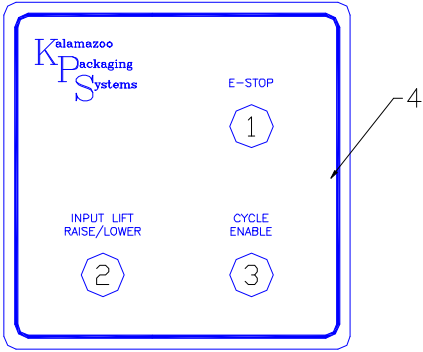
## PARTS MANUAL: 850FA-12-C48 SUBPANEL

ITEM	PART #	DESCRIPTION	QTY
1	220187	mitsubishi PLC 60 I/O	1
2	211011	1 AMP BREAKER (PLC)	1
3	211015	15 AMP BREAKER (SECONDARY)	1
4	211210	10 AMP DUAL BREAKER (PRIMARY)	1
5	209104	TRANSFORMER 1000VA	1
6	131201	PAYNE CONTROL (HOT WIRE)	1
7	211203	3 AMP DUAL BREAKER (WINDER BRAKE)	1
8	208250	2PDT RELAY (HOT WIRE POWER)	1
8	208260	8-PIN BASE	1
9	208250	2PDT RELAY (WINDER MOTOR BRAKE)	1
9	208260	8-PIN BASE	1
10	208450	4PDT 10 AMP RELAY (POWER ON RELAY)	1
10	208460	14-PIN BASE	1
11	210795	MCR 4-POLE 40 AMP	1
12	211330	30 AMP 3-POLE BREAKER (MAIN)	1
13	210744	DISCONNECT 4 N.O. 40 AMP	1
13	210747	DISCONNECT SHAFT	1
13	210746	DISCONNECT SELECTOR HANDLE	1
14	211302	2 AMP 3-POLE BREAKER (INPUT CONVEYOR)	1
15	131870	1/2hp. AC DRIVE 480/3/60hz. (INPUT CONVEYOR)	1
16	211306	6 AMP 3-POLE BREAKER (WINDER)	1
17	131875	2hp. AC DRIVE 230/3/60hz. (WINDER)	1
18	211302	2 AMP 3-POLE BREAKER (OUTPUT CONVEYOR)	1
19	131870	1/2hp. AC DRIVE 480/3/60hz. (OUTPUT CONVEYOR)	1
20	209700	12 POLE TERMINAL STRIP	4

# PARTS MANUAL: 850FA-12-C48 START CONSOLE

ITEM	PART #	DESCRIPTION	QTY
1	207050	RED MUSHROOM PUSH BUTTON (CYCLE STOP)	1
2	207100	2-POSITION SELECTOR SW. (RAISE/LOWER)	1
3	207001	GREEN PUSH BUTTON (CYCLE START)	1
4	850FA-12-C48-SC DECAL	850FA-12-C48-SC START CONSOLE DECAL	1

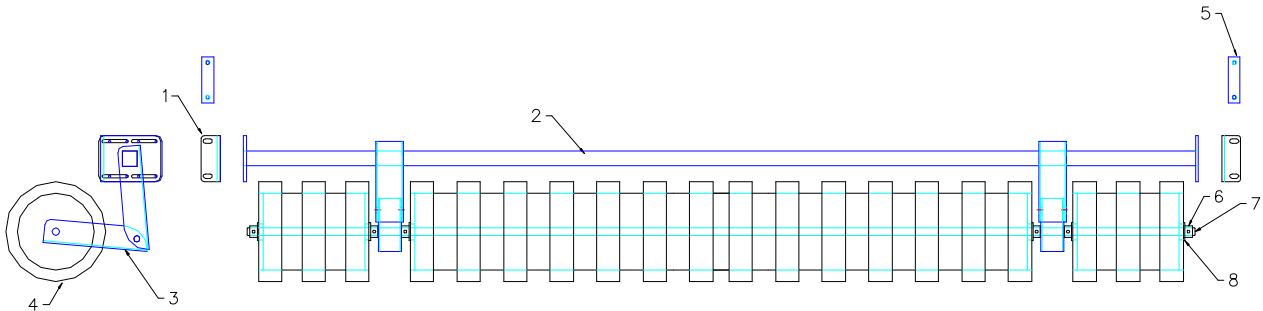
Kalamazoo Packaging Systems  
 Model #850FA-12-C48-SC  
 Start Console Decal



# PARTS MANUAL: 800 HORIZONTAL WINDER SPRING HOLD DOWN ROLLER

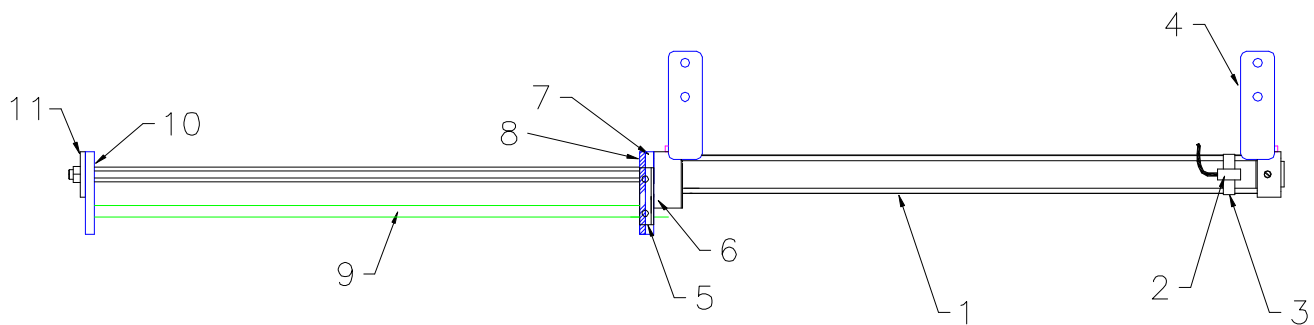
ITEM	PARTS #	DESCRIPTION	QTY
1	800-SHD-04	SPRING HOLD DOWN ADAPTER PLATE	2
2	MODEL#	CROSS BAR	1
3	800-SHD-01	LOWER SPRING HOLD DOWN BRACKET	2
4	538023	1"x 2"x 23.75 FOAM RUBBER GLUE & TAPED + ( MODEL # )	
5	850FAC-SHD-05	MOUNTING BRACKET	2
6	121500	5/8" SHAFT COLLARS	6
7	MODEL#	5/8" SHAFT	1
8	120600	5/8x 1-3/8 FLANGE BEARING	6

Kalamazoo Packaging System  
Model # 800-SHD  
6" SPRING HOLD DOWN ROLLERS

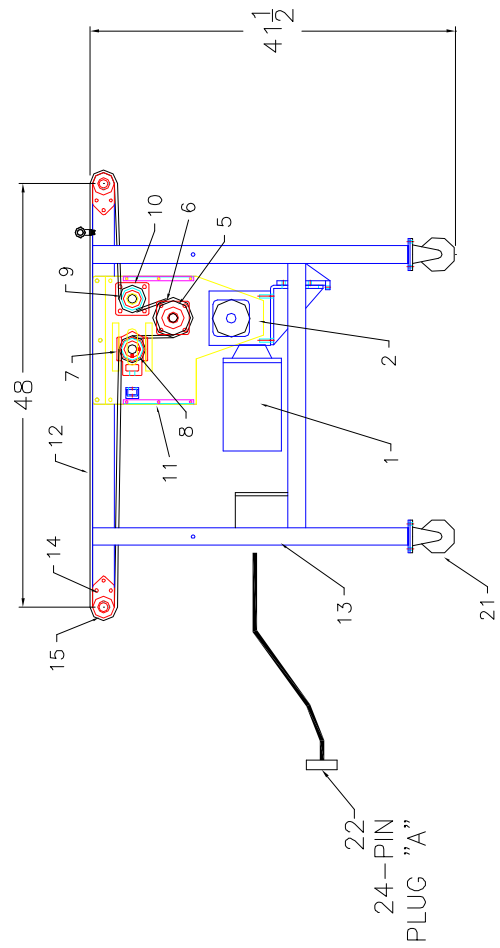
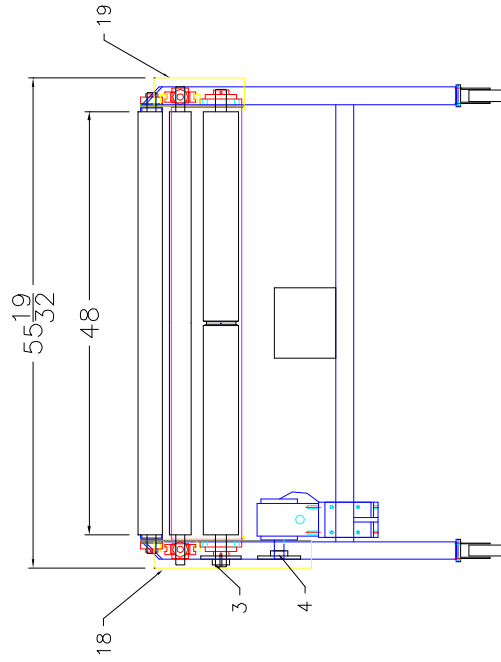
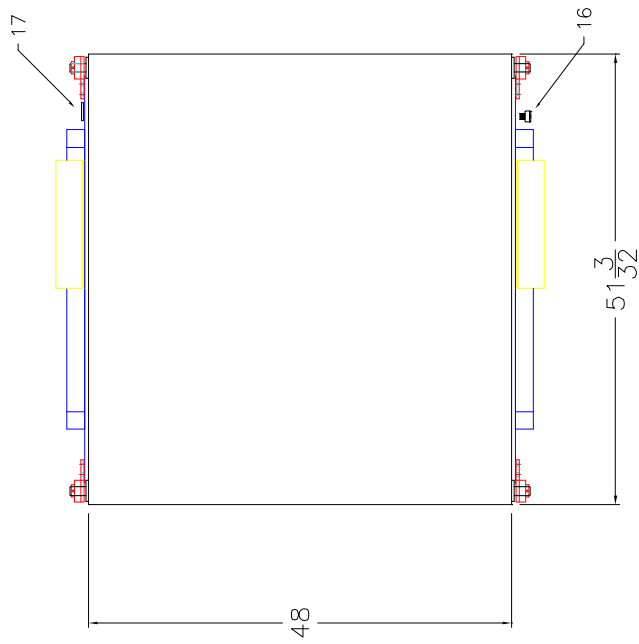


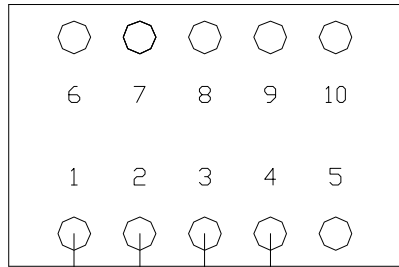
## PARTS MANUAL: 850FAC-20 FILM HOLDER and CUTTER

ITEM	PART# / DWG.#	DESCRIPTION	QTY
1	270129	CUTTER CYLINDER 1-1/2" BORE x 16" STROKE	1
2	270131	FILM CUTTER LIMIT SWITCH	1
3	270132	FILM CUTTER LIMIT SWITCH BAND	1
4	860FAC-20-FC6	FILM CUTTER BACK CYLINDER MOUNT	1
4a	860FAC-20-FC6	FILM CUTTER FRONT CYLINDER MOUNT	1
5	131009	4-1/2" TUBE HOT WIRE	1
6	820FAC-20-FC5	HOT WIRE MOUNTING BRACKET	1
7	820FAC-20-FC1	FILM CUTTER CYLINDER FRONT PLATE	1
8		1/4"x 3-1/4"x 3-5/8" FOAM RUBBER	1
9		1/2" TEFLON SHAFT x 26.0"	2
10	820FAC-20-FC2	FILM CUTTER CYLINDER END PLATE	1
11	820FAC-20-FC3	FILM CUTTER CYLINDER END CAP	1



Kalamazoo  
 Packaging  
 Systems  
 Model # 848PB48-41-0  
 Output Conveyor Layout





<C> OUTPUT CONVEYOR  
10-PIN CONNECTOR

104 105 106 GRD

OUTPUT  
CONVEYOR  
MOTOR

**Kalamazoo Packaging Systems**  
**PARTS MANUAL: 848PB-48**  
**OUTPUT POWERED BELT CONVEYOR**

ITEM	PART #	DESCRIPTION	QTY
1	105313	1/2HP. 230/3/60HZ. AC MOTOR 56TC FACE	1
2	106625	BOSTON R/A REDUCER 40:1 2.38 CD 56C FACE	1
3	108054	DRIVE SPROCKET 50B15x1-1/8"	1
4	108058	DRIVEN SPROCKET 50B24x1"	1
5	121150	1-1/4" 4-BOLT FLANGE BEARING	2
6	848PB48-17	848PB 4" DRIVE ROLLER	1
7	848PB48-15	848PB 2-1/2" TAKE-UP ROLLER	1
8	121066	1-1/4" TAKE-UP BEARING	2
9	848PB48-14	848PB 2-1/2" IDLER ROLLER	1
10	121140	1" 4-BOLT FLANGE BEARING	2
11	848PB48-07	848PB DRIVE ROLLER END COVER	2
12	848PB48-BELT	848PB-48 BELT (BLACK RUFF TOP)	1
13	848PB48-11	848PB48 FRAME	1
14	121054	1" CHEVRON BEARING	4
15	848PB48-17	2-1/2" END ROLLER	2
16	848PB48-05	DRIVE SIDE GUARD	1
17	848PB48-06	DRIVEN SIDE GUARD	1
18	122200	4"x 1-1/4" TOTAL LOCK SWIVEL CASTER	2
18	122202	4"x 1-1/4" RIGID CASTER	2
19	210310	10-PIN QUICK CONNECTOR (COMPLETE)	1

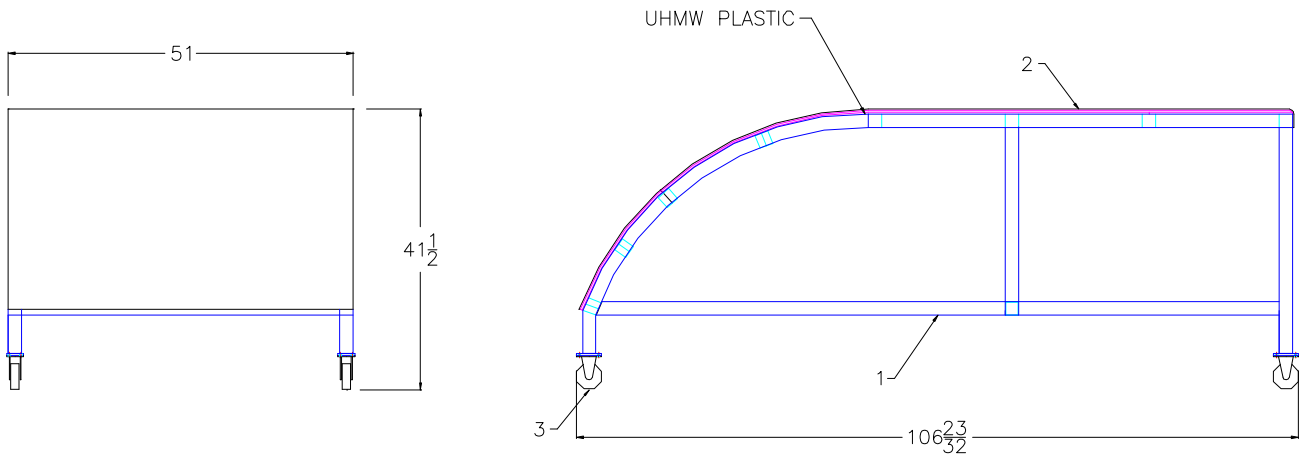
# Kalamazoo Packaging Systems

## PARTS MANUAL: 850-STD

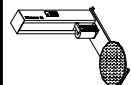
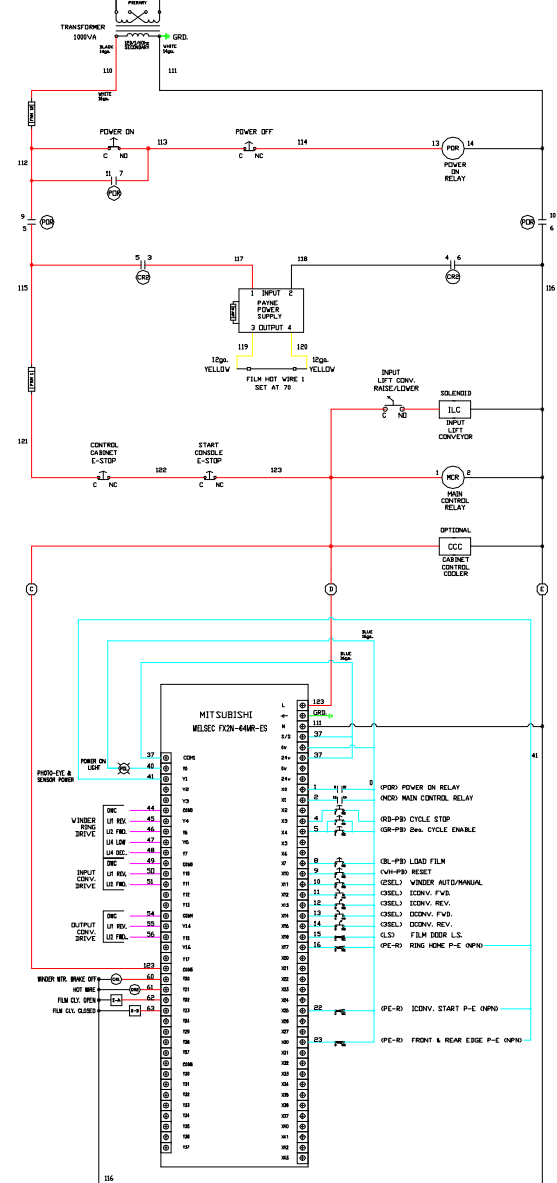
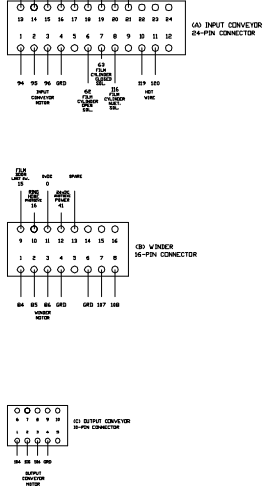
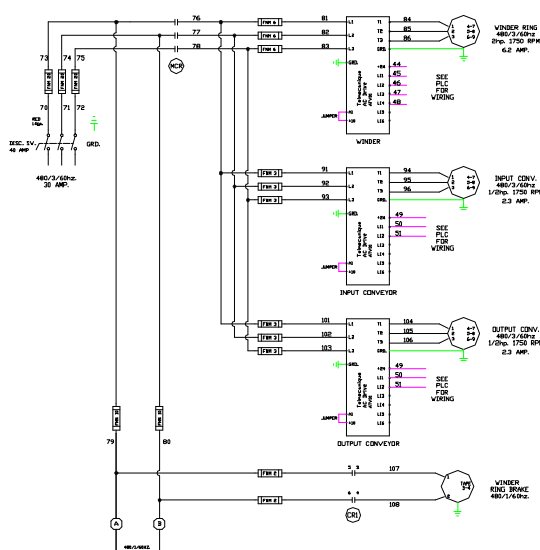
### 850 SLIDE TABLE DROP

ITEM	PART #	DESCRIPTION	QTY
1	850-STD	850 SLIDE TABLE DROP FRAME	1
2		1/4" UHMW PLASTIC	1
3	122200	4"x 1-1/4" TOTAL LOCK SWIVEL CASTER	2
3	122202	4"x 1-1/4" RIGID CASTER	2

Kalamazoo  
Packaging  
Systems  
Model # 850-STD  
850 SLIDE TABLE DROP



- 110v L1      14ga. RED
  - 110v L2      14ga. WHITE
  - 480V          14ga. BLACK
  - DC VOLTS    16ga. BLUE
  - CONTROL    18ga. ORANGE
  - HOT WIRE    10ga. YELLOW
  - GROUND      14ga. GREEN
- (LG-PB) LIGHTED GREEN PUSH BUTTON  
 (RD-PB) RED PUSH BUTTON  
 (RM-PB) RED MUSHROOM PUSH BUTTON  
 (GR-PB) GREEN PUSH BUTTON  
 (WH-PB) WHITE PUSH BUTTON  
 (BL-PB) BLUE PUSH BUTTON  
 (2SEL) 2-POSITION SECELTOR  
 (3SEL) 3-POSITION SECELTOR  
 (LS) LIMIT SWITCH  
 (SENS) CYLINDER SENSOR  
 (PE-D) PHOTO-EYE DIFFUSE  
 (PE-R) PHOTO-EYE RETROREFLECTIVE
- PHOTO-EYE WIRING  
 4I BROWN  
 0 BLUE  
 SIGNAL WHITE



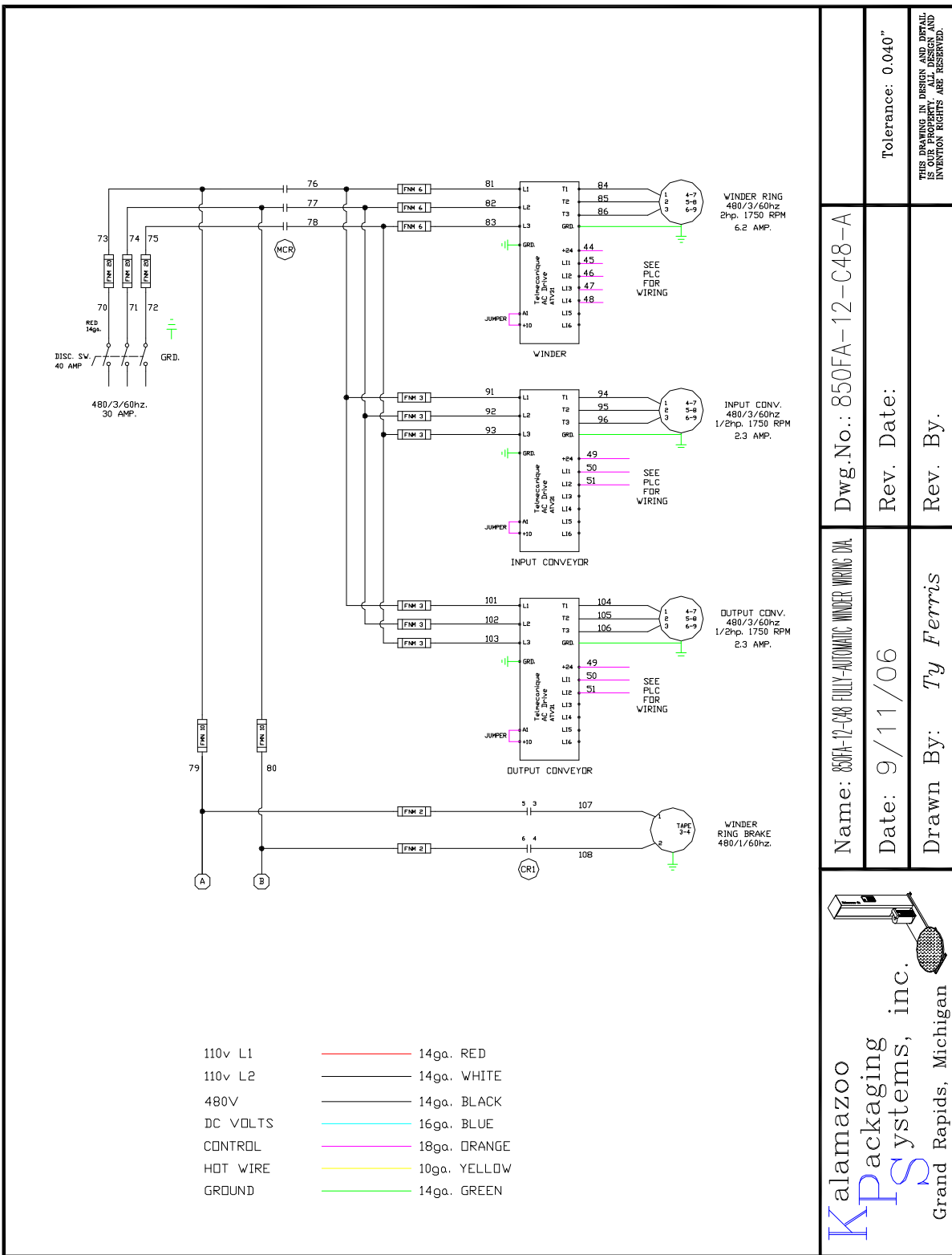
**Kalamazoo**  
**KPS** packaging systems, inc.  
 Grand Rapids, Michigan

Name: 850FA-12-C48 FULLY-AUTOMATIC CONVERTORIZED WINDER (MPD)  
 Date: 08/01/06  
 Drawn By: Ty Ferris

Dwg.No.: W850FA-12-C48  
 Rev. Date: 09/11/06  
 Rev. By:

Tolerance: 0.040"

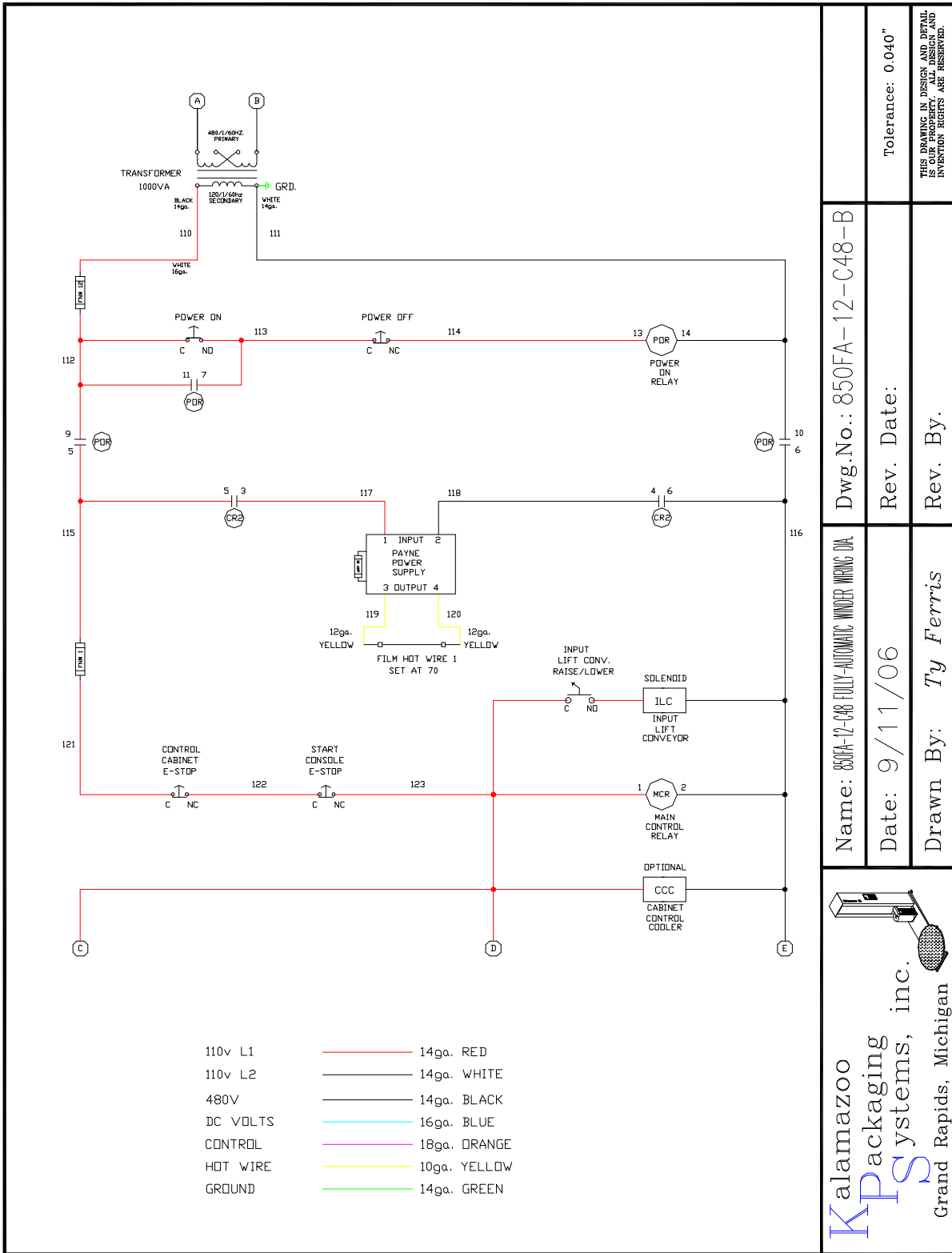
THIS DRAWING IN DESIGN AND DETAIL IS OUR PROPERTY. ALL DESIGN AND INVENTION RIGHTS ARE RESERVED.



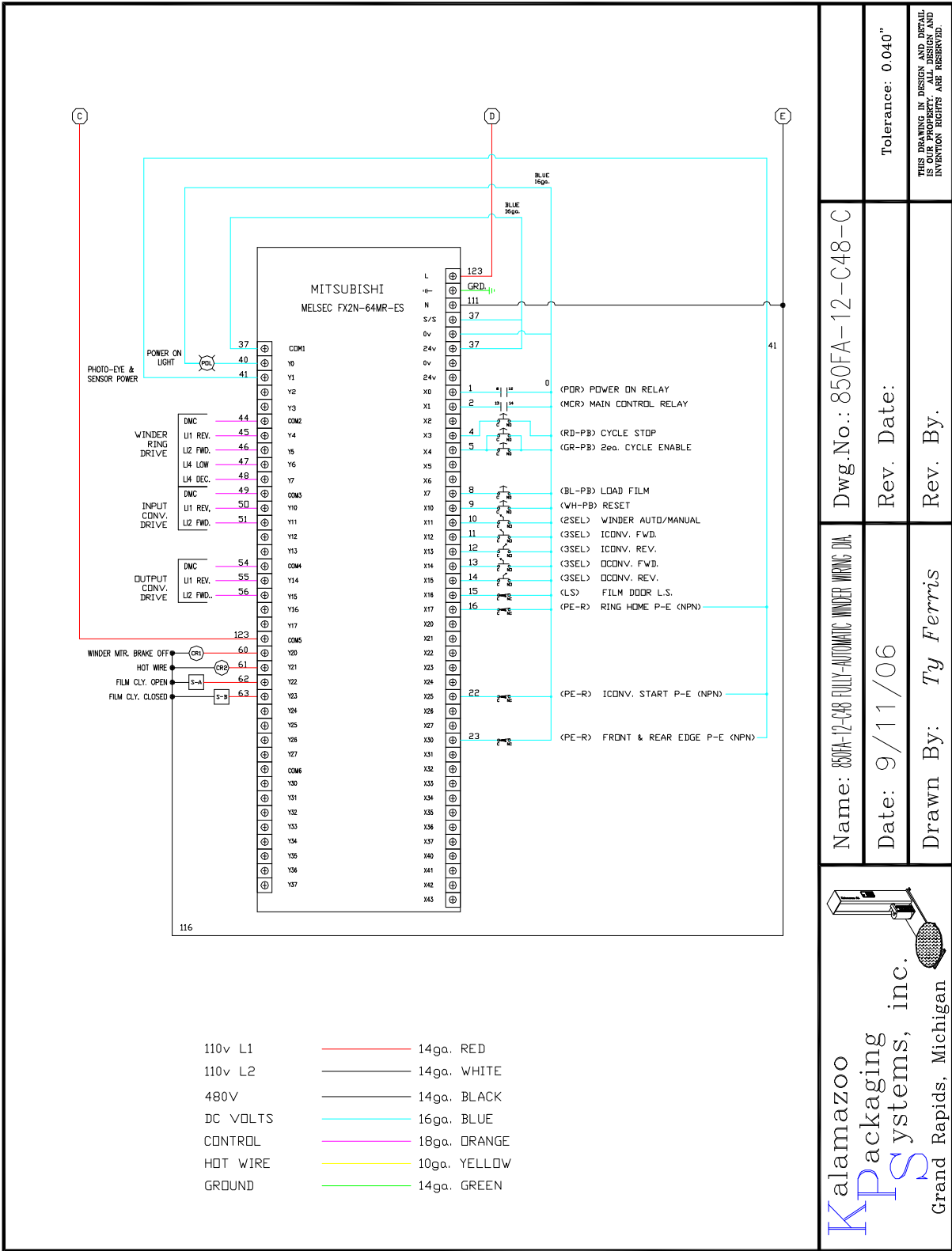
Dwg.No.: 850FA-12-C48-A	Tolerance: 0.040"
Name: 850FA-12-C48 FULLY-AUTOMATIC WINDER WIRING DIA.	Rev. Date:
Date: 9/11/06	Rev. By: Ty Ferris

**Kalamazoo Packaging Systems, inc.**  
Grand Rapids, Michigan

THIS DRAWING IN DESIGN AND DETAIL IS OUR PROPERTY. ALL DESIGN AND INVENTION RIGHTS ARE RESERVED.



Name: 850FA-12-C48-FULLY-AUTOMATIC WINDER WIRING DIA		Dwg.No.: 850FA-12-C48-B		Tolerance: 0.040"	
Date: 9/11/06		Rev. Date:		THIS DRAWING IS DESIGN AND DETAIL IS OUR PROPERTY. ALL DESIGN AND INVENTION RIGHTS ARE RESERVED.	
Drawn By: Ty Ferris		Rev. By:			
 Kalamazoo Packaging Systems, inc. Grand Rapids, Michigan					



Dwg.No.: 850FA-12-C48-C  
 Rev. Date:  
 Rev. By.

Name: 850FA-12-C48 FULLY-AUTOMATIC WINDER WIRING DIA.  
 Date: 9/11/06  
 Drawn By: Ty Ferris

**Kalamazoo**  
**KPS** Packaging systems, inc.  
 Grand Rapids, Michigan

Tolerance: 0.040"  
 THIS DRAWING IN DESIGN AND DETAIL IS OUR PROPERTY. ALL DESIGN AND INVENTION RIGHTS ARE RESERVED.

Print program from MELSEC 850FA-12-C48