

MODEL 4000M-PM-05
POWERED MANUAL
STRETCH WRAP SYSTEM



OPERATOR'S
MANUAL

Table of

Contents

Warranty.....	3
Assembly.....	3
Set up.....	4
Operating Instructions.....	5
Maintenance.....	6
Adjustments	6
Trouble Shooting.....	6
Drive programming.....	7
Film lift program.....	8
Turntable program.....	9
Scale programming.....	10
Parts Lists	11-26
Wiring Diagram	27

Introduction

Congratulations! Your purchase of a **Kalamazoo Model 4000M-PM** Powered Manual Spiral Stretch Wrapping System will provide you with years of efficient stretch wrapping service. Your investment will ensure that your products will arrive cleaner, with less damage and pilferage at their destination at a lower cost to you.

Warranty

Kalamazoo Packaging Systems, Inc. (KPS) agrees to furnish the purchaser, without charge, F.O.B. the factory, any part found to be defective in either material or workmanship within one (1) year from date of shipment, provided the purchaser gives immediate notice of any defect and description of that defect to **KPS**. **KPS** reserves the right to inspect any defective part to verify the defect and to determine probable cause of same.

The liability of **KPS** under this warranty is limited to furnishing replacements for defective parts, and unless otherwise agreed to in writing, the purchaser shall bear the expense of installation.

Failure of equipment or parts due to abuse, misuse, neglect, incorrect operating techniques or power line drops or surges shall not constitute failure because of defective material or workmanship, and are expressly excluded from this warranty.

The above is the only warranty with no other guarantees which extend beyond the above and the seller disclaims any implications including but not limited to a warranty of merchantability.

Modular Design

- All **Kalamazoo** stretch wrap equipment is of modular design to grow and adjust to your specific packaging requirements. Your system has the ability to grow with you in the future. You can change modules to adjust to whatever your packaging requirements may be.

Assembly

Your **4000M-PM** Stretch Wrap System has been assembled and tested at our manufacturing plant and released for shipment by a qualified technician. If the unit was shipped via common carrier, it will be on a pallet. If the unit was delivered by our truck or by your distributor's truck it may not be crated. **Any damage done in transit should be reported to the carrier immediately.** All our shipments are sent F.O.B. Grand Rapids, Michigan, therefore; the customer is responsible to settle any damage claims with the transportation company. Kalamazoo Packaging Systems will do everything possible to assist you in these matters.

Once the machine was cleared for shipment at the factory, It was put on a pallet and wrapped completely assembled . No electrical wires were removed or disconnected for shipping.

Remove the unit from the pallet. The machine is now ready for operation and should be plugged into an independent 115 volt, 30 amp. power source.

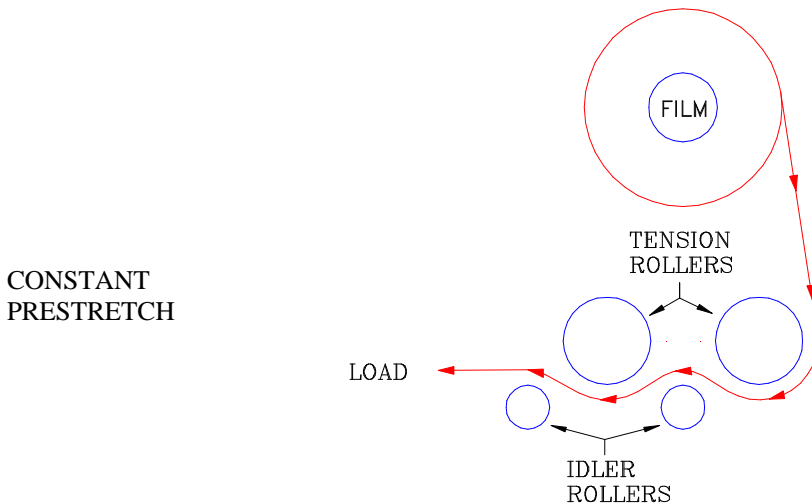
NOTE: The use of an extension cord may reduce the efficiency and life of the machine and is not recommended.

Set-Up Procedures

- The spiral module and turntable are designed to run smoothly together. Before wrapping the first pallet, check the ON/OFF functions of the turntable and the RAISE/OFF/LOWER functions of the spiral. Then center a load on the turntable and jog to check clearances.

Loading The film

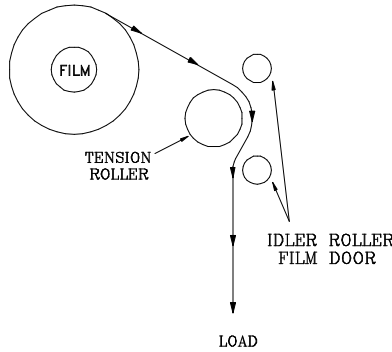
If your wrapper is equipped with our **Kalamazoo** Constant Prestretch Film Delivery System, place a roll of 20" stretch film on the film core holder and open the film door. Thread the film clockwise around the back rubber covered tension rollers and close the film door.



**Loading the film
for optional
variable tension**

If your wrapper is equipped with our Variable Tension Film Delivery System, place a roll of 20" stretch film on the film core holder and open the film door. Thread the film clockwise around the black rubber covered tension roller and close the film door. Once the film is loaded and the desired film tension is arrived at, the film tension need not be adjusted again until the brand of film or the film thickness is changed.

**VARIABLE
TENSION**



**program
controls**

- 1) E-STOP button. Turns off the main control relay. The system will no run.
- 2) Turntable ON/OFF switch. Turns the turntable and optional variable tension brake on.
- 3) Film carriage RAISE/OFF/LOWER. Runs the film carriage up and down
- 3) Optional Film Tension Control. Turn the knob clockwise to increase film tension.
- 4) Film Lift Speed Control. Turn the knob clockwise for less over wrap and counter clockwise for more over wrap.
- 5) Turntable Speed Control. Turn the knob clockwise to make the table rotate faster and counter clockwise to slow the table down.

**Easy operating
instructions**

- 1) Adjust the limit switches to wrap at the desired locations on your load.
- 2) Attach the film to the pallet securely.
- 3) Start the turntable with the ON/OFF selector switch.
- 4) Adjust the OPTIONAL FILM TENSION CONTROL knob to obtain the correct amount of film stretch.
- 5) When there are enough wraps around the bottom of the load to properly stabilize it, operate the film carriage switch to raise the carriage (i.e., raise).
- 6) When the carriage reaches the top limit switch or you have wrapped the load as high as desired, stop the film carriage by moving the switch to the center off position.
- 7) The unit will now apply extra film to the top of the load until you start the carriage on its way down.

THE SEQUENCE MAY BE STOPPED AT THIS POINT IF THE LOAD IS ADEQUATELY SECURED BY MOVING THE TURNTABLE CONTROL SWITCH TO THE OFF POSITION. CUT AND SECURE THE FILM AND LOWER THE CARRIAGE TO THE LOWER POSITION. YOU MAY ALSO BE ABLE TO WRAP THE NEXT LOAD FROM THE TOP DOWN.

- 8) The carriage will stop at the lower limit switch and you should then place both control switches in the off position.
- 9) Cut the film and smooth the end against the load. The film's inherent cling will hold it in place.

CAUTION: WHEN CHANGING FILM CARRIAGE DIRECTION **ALWAYS** HESITATE IN THE OFF POSITION LONG ENOUGH FOR THE CARRIAGE TO STOP BEFORE STARTING IN THE OTHER DIRECTION.

Maintenance

- 1) Check and tighten any loose fasteners.
- 2) Check all electrical connections and replace any worn or frayed cords.
- 3) Clean and lubricate the tower channels where the rollers run with #2 grease every three months, more frequently if the unit is in an especially dirty location.
- 4) Lubricate and adjust chains every three (3) months. Chain should be lubricated with a penetrating type commercial chain lube.
- 5) Lubricate pillow blocks with #2 grease every six months.

Troubleshooting

When any problem develops, review the operating instructions. Diagnose specific problems and review the options below.

Push the E-STOP button in wait 1 min.. Turn the button to reset.

This will denegize the AC drives and reset a fault.

machine not running at all

- ✓ Check wall receptacle for power.
- ✓ Check Power cord for cut. (Fork Lift Trucks damage cords.)

- ⓘ STOP the spiral carriage and the turntable.

DISCONNECT POWER FROM MACHINE

- ✓ Check both top and bottom limit switches for damage, sticking, or internal shorts.
- 🔧 *Carriage Malfunctions* Remove panel cover. Visually inspect for loose wires and for signs of arcing or burning of any of the components.

Constant Prestretch

- Check belt tension .
- Check brake controller for AC in and DC out.
- Check for damage cords.

Variable Tension

- Check brake for DC power.
- Check brake pads.

☎ It is advisable to call for technical assistance at this point.

- Check for damage cords.

Technical and Customer Service is available from Kalamazoo Packaging Systems, Monday through Friday 7:30 A.M. to 4:00 P.M. (EST). Stock is maintained on parts to allow us to ship the same day on most orders.

If you have a problem, we want to know about it! Please call and report any difficulties you may encounter.

- Local - (616) 534-2600
- National - (800) 253-4625

TELEMECANIQUE ALTIVAR 11 AC DRIVE PROGRAMMING

To change a parameter in the AC Drive.

1. Press the up or down key to get into the parameter you would like to change.
2. Press the ENT key.
3. Use the up/down arrow key to change the value.
4. Press the ENT key.
5. Press the ESC key.

4000M-PM TURNTABLE DRIVE

ACC	5.0	Turntable acceleration time
DEC	6.0	Turntable deceleration time
SP4	15.0	Preset speed 4
TDC	0.1	
SFR	2khz.	
STA	10%	

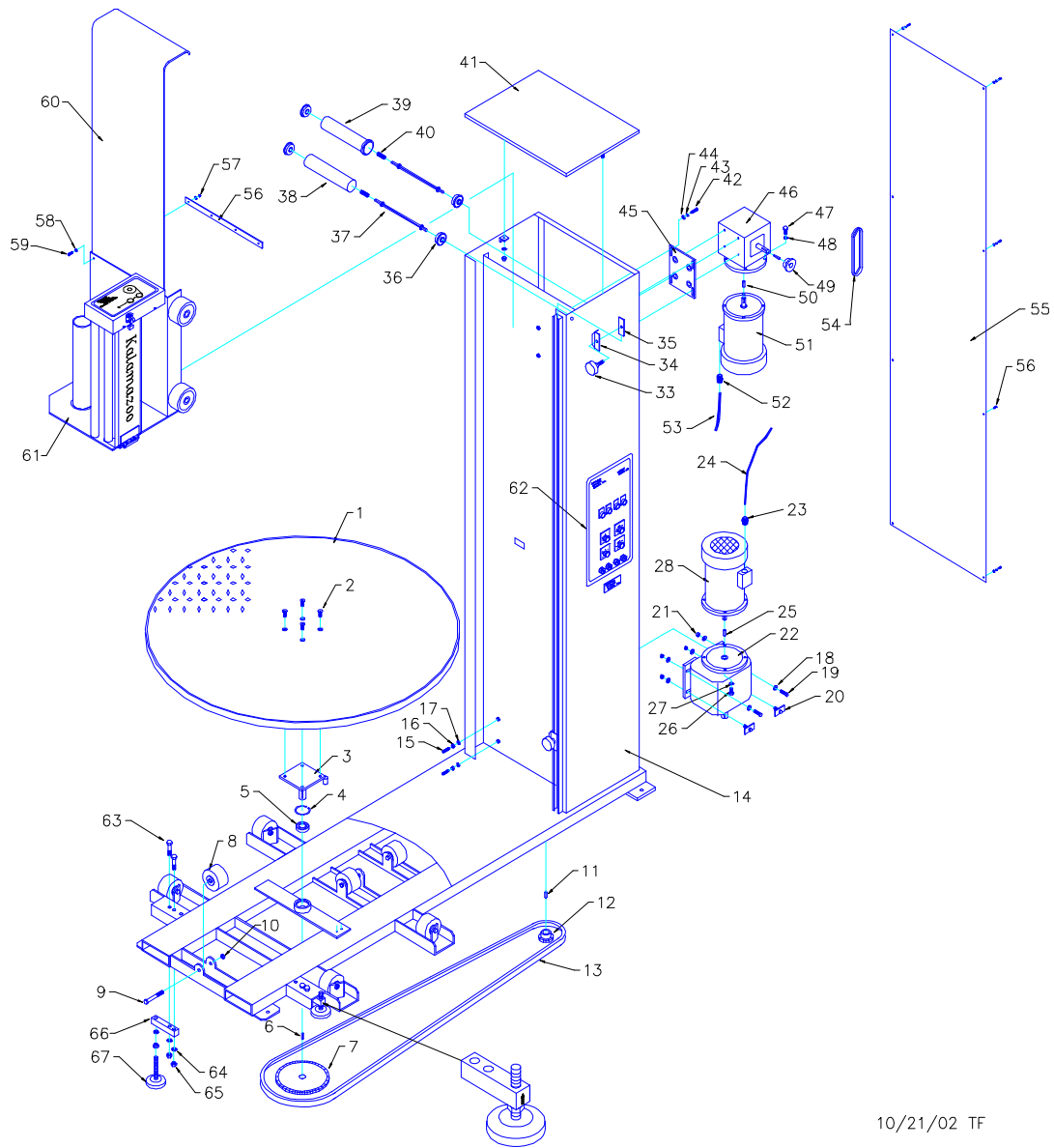
4000M-PM FILM CARRIAGE DRIVE

ACC	2.5	Turntable acceleration time
DEC	0.1	Turntable deceleration time
TDC	0.1	
SFR	2khz.	
STA	10%	

INCELL TI-500E QUICK CALIBRATION

	500LBS. 1K-CELL	3000LBS. 4K-CELL	4000LBS. 4K-CELL	6000LBS. 4K-CELL
PUSH THE DIP SWITCH IN THE BACK OF THE SCALE READ OUT TO THE LEFT. TURN ON THE SCALE. F1 PUSH ZERO 0000	5000	6000	6000	6000
PUSH NET PUSH LB. F1 PUSH PRINT F9 PUSH ZERO 0	1	1	1	1
PUSH NET PUSH LB. F9 PUSH PRINT F10 PUSH ZERO 0 PUSH PRINT 0	0.0	0	0	0
PUSH NET PUSH LB. F10 PUSH PRINT F16 PUSH ZERO PUSH ZERO 0 PUSH NET PUSH LB. F16 PUSH PRINT F17 PUT KNOW WEIGHT ON SCALE PUSH ZERO USE THE TARE-PRINT BUTTON TO TELL SCALE THE WEIGHT PUSH NET PUSH LB. REMOVE WEIGHT AND PUT PUSH THE DIP SWITCH BACK TO RIGHT. END.				

Kalamazoo Packaging Systems MODEL #4000M-PM TURNTABLE & TOWER



10/21/02 TF

**PARTS MANUAL:
4000M-TT TURNTABLE & TOWER**

ITEM	PART#	GRAINGER#	DESCRIPTION	QTY.
1	362022		4000M DISC	1
2	L81	3G836	3/8-16x 1" FLAT HEAD CAP SCREW	4
3	367062		4000M CENTER SHAFT	1
4	120905	6LC89	2" SNAP RING	1
5	120900	1L009	1" TURNTABLE CENTER BEARING	1
6	L3	2F792	1/4"x 1/4"x 1" KEYWAY	1
7	108100		50B40x 1" SPROCKET	1
8	122150	2G221	3-1/4"x 2.2"x 1/2" TURNTABLE WHEELS	7
9	122155	1G450	1/2"X 3-1/2" WHEEL AXLE	7
10	L126	2U390	1/2-13 JAM NUTS	7
11	L3	2F792	1/4"x 1/4"x 1" KEYWAY	1
12	108000	1L150	50B12x 1" SPROCKET	1
13	108500	6L074	#50 CHAIN x 10'6"	10.6
14	406000		4000M TURNTABLE & TOWER WELDMENT	1
15	L54	3F257	5/16-18x 1-1/2" SOCKET SET SCREW	2
16	L46	2U747	5/16-18 NUT	2
17	L49	4P492	5/16 SAE WASHER	2
18	L65	4P473	3/8 USS WASHER	4
19	L83	4P208	3/8-16x 1-1/2" HEX HEAD CAP SCREW	4
20	L65	4P473	3/8 USS WASHER	4
21	L78	4P434	3/8-16 NYLOCK NUT	4
22	106050	4Z614	57:1 INLINE REDUCER	1
23	210340	2A247	CORD GRIP	1
24			3ea. 14ga. RED MTW & 1ea. 14ga. GREEN MTW WIRE	3'

PARTS MANUAL:

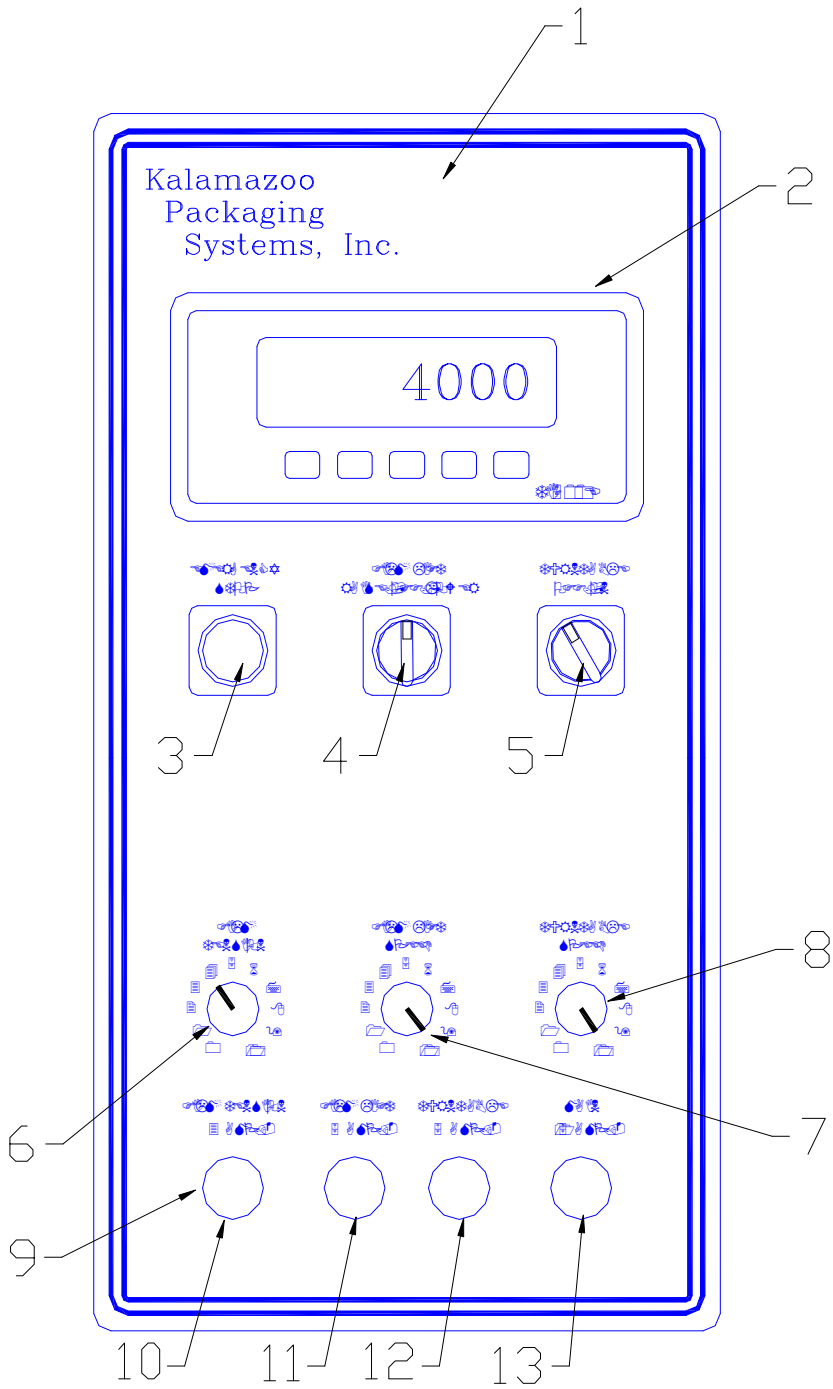
4000M-PM TURNTABLE & TOWER

ITEM	PART#	GRAINGER#	DESCRIPTION	QTY.
25	L2	2F788	3/16"x 3/16"X 3/4" KEYWAY	1
26	L80	4P206	3/8-16x 1" HEX HEAD CAP SCREW	4
27	L64	2V102	3/8 LOCK WASHER	4
28	105313	2N916	1/2HP AC TEFC MOTOR	1
33	800095	4X820	3/8-16 KNOB x1"	2
34	406004		4000M-OLSB OUTER LIMIT SWITCH BRACKET	2
35	406005		4000M-ILSB INTER LIMIT SWITCH BRACKET	2
36	121405		1.9" CONV. ROLLER BEARING	4
37	406006		4000M-STIR IDLER ROLLER HEX SHAFT	1
37a	406008		4000M-STDR DRIVE ROLLER HEX SHAFT	1
38	406007		4000M-STIR IDLER BELT ROLLER	1
39	406009		4000M-STDR DRIVE BELT ROLLER	1
40	121445		ROLLER SPRING	2
41	406001		4000M-STTC-01 TOWER TOP COVER	1
42	L51	4P192	5/16-18x 1" HEX HEAD CAP SCREW	4
43	L47	4P503	5/16 LOCK WASHER	4
44	L48	4P472	5/16 USS WASHER	4
45	406003		4000M-STMM-01 FILM LIFT MOTOR MOUNT	1
46	106100	4Z284	60:1 R/A REDUCER	1
47	L80	4P206	3/8-16x 1" HEX HEAD CAP SCREW	4
48	L64	2V102	3/8 LOCK WASHER	4
49	107976	1L113	40B13x 5/8" SPROCKET	1
50	L2	2F788	3/16"x 3/16"X 3/4" KEYWAY	1
51	105313	2N916	1/2HP AC TEFC MOTOR	1
52	210340	2A247	CORD GRIP	1
53			3ea. 14ga. RED MTW & 1ea. 14ga. GREEN MTW WIRE	4'
54	108400		# 40 CHAIN x 23" w/ MASTER LINK	1
55	406002		4000M-STD TOWER BACK COVER	1
56			1/4-20 BUTTON HEAD SCREWS	8

**PARTS MANUAL:
4000M-PM TURNTABLE & TOWER**

ITEM	PART#	GRAINGER#	DESCRIPTION	QTY.
55			1/4-20 BUTTON HEAD CAP SCREW	8
56	406011		4000M-H-BP CARRIAGE BELT PLATE	1
57	L20	4P461	10/24 KEPS NUT	4
58	L16	2V023	#10 WASHER	4
59	L21	5K796	10/24x 3/4" TRUSS HEAD	4
60	406010		4000M-BELT #120 BLACK PVC 18"x 90"	1
61	406020		4000M-H-CP CONSTANT PRESTRETCH FILM DELIVERY HEAD	1
62			4000M- CONTROL PANEL (SEE PAGE 10 & 11)	1
			OPTIONAL SCALE	
63			1/2-20x 2-1/2" H.H.C.S.	6
64			1/2-20 NUTS	9
65			1/2 LOCK WASHER	9
66			4K LOAD CELL	3
67			LOAD CELL FEET	3

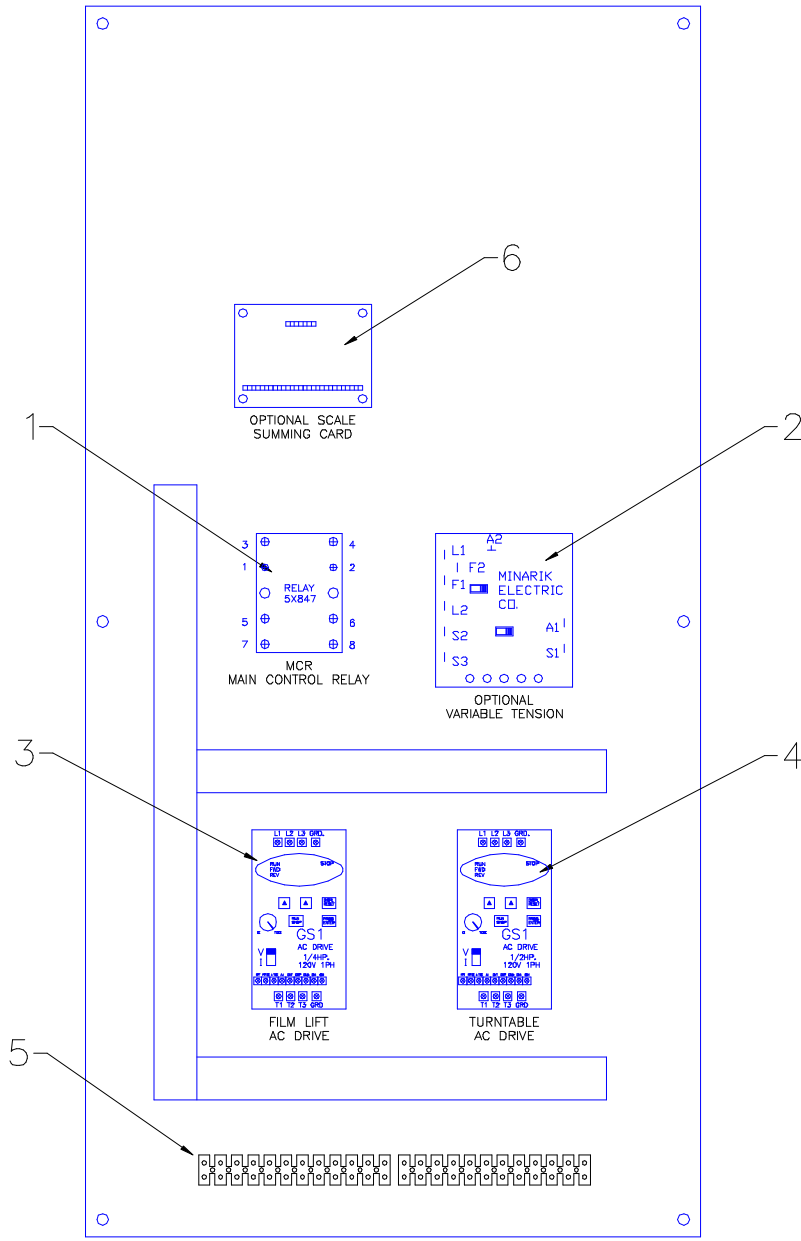
4000M-PM CONTROL PANEL



PARTS MANUAL: 4000M-PM CONTROL PANEL

ITEM	PART #	GRAINGER	DESCRIPTION	QTY
1	4000M-PM		4000M-PM DECAL	1
2	241012		SCALE DISPLAY TI-500E (OPTIONAL SCALE)	1
3	207110		E-STOP BUTTON (PUSH OFF/ TURN TO RESET)	1
4	207107		3-POSITION SELECTOR SWITCH	1
5	207100		2-POSITION SELECTOR SWITCH	1
6	131205		10K POTENTIOMETER w/ KNOB (OPTIONAL FILM TENSION)	1
7	131205		10K POTENTIOMETER w/ KNOB (FILM LIFT SPEED)	1
8	131205		10K POTENTIOMETER w/ KNOB (TURNTABLE SPEED)	1
9	210770		PANEL MOUNT FUSE HOLDER	4
10	210777	4XC11	3AMP. FUSE (OPTIONAL FILM TENSION)	1
11	210778	4XC12	5AMP. FUSE (FILN LIFT)	1
12	210778	4XC12	5 AMP. FUSE (TURNTABLE)	1
13	210786	4XC14	15 AMP. FUSE (MAIN)	1

4000M-PM SUBPANEL

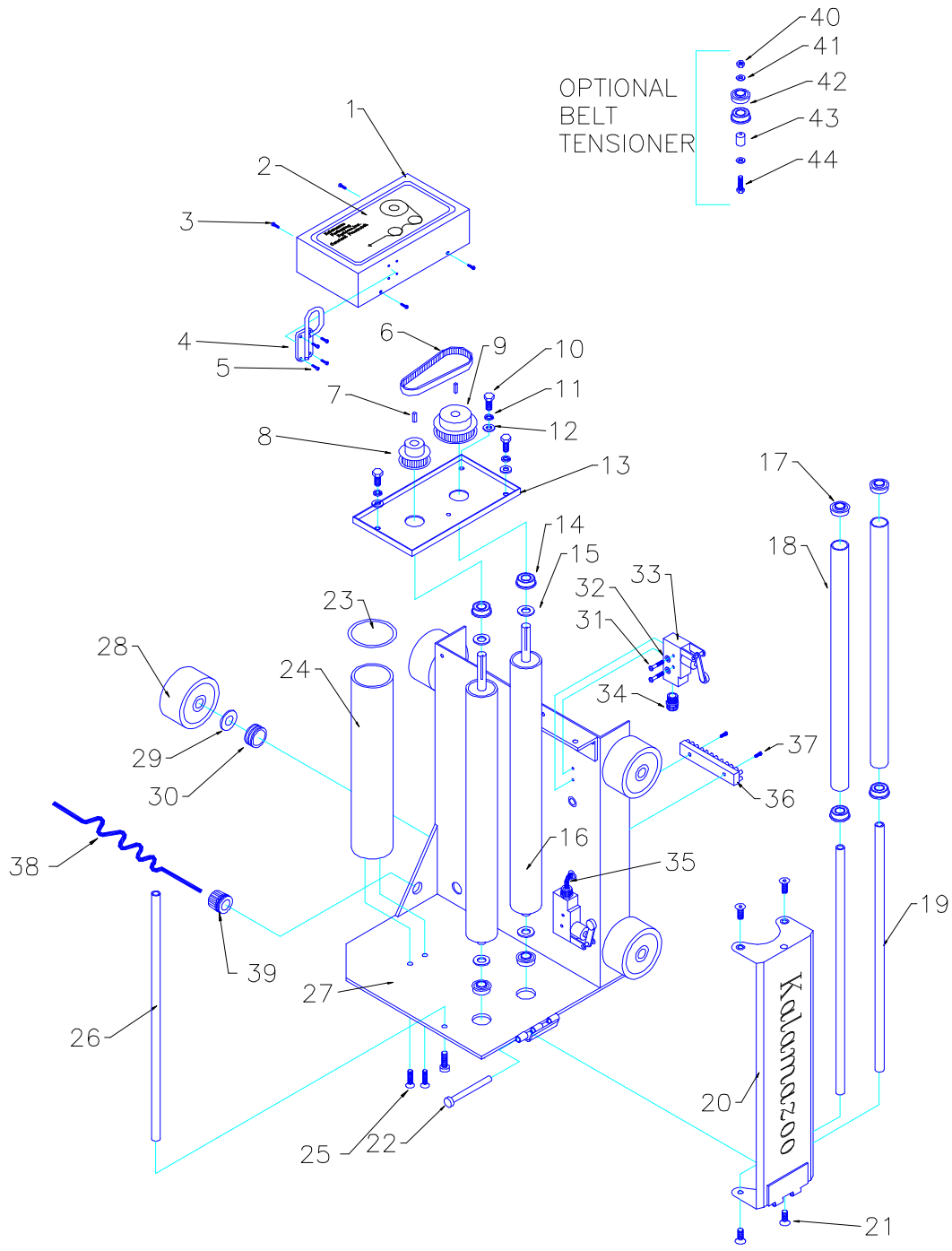


				28	GRD	29	17	15	18	14	GRD	9	10	11	GRD	19	20	21	GRD	L-1	L-2
				BLK	GRN	BLK	WH	NC	C	NC	GRN	GRN	RED	RED	GRN	RED	RED	RED	GRN	BLK	WH
				OPTIONAL			ULS	ULS	ULS	DLS	FILM	LIFT			TABLE				115v	AC	

PARTS MANUAL: 4000M-PM SUBPANEL

ITEM	PART #	GRAINGER	DESCRIPTION	QTY
1	208050	5X847	2PDT 30a. MAIN CONTROL RELAY (MCR)	1
2	131200	2M510	90/180v DC CONTROLLER (OPTIONAL FILM TENSION)	1
3	131850		1/2 hp. 115v INPUT 230v 3 ph. OUTPUT	1
4	131850		1/2 hp. 115v INPUT 230v 3 ph. OUTPUT	1
5	209700		12 TERMINAL STRIP	2
6	241011		SUMMING CARD (OPTIONAL SCALE)	1

4000M-CP CONSTANT PRESRTETCH FILM DELIVERY



Kalamazoo Packaging Systems
PARTS MANUAL:
CONSTANT PRESTRETCH FILM DELIVERY

ITEM	PART#	GRAINGER	DESCRIPTION	QTY
1	406023		4000M-H-C FILM COVER	1
2	406024		CONSTANT PRESTRETCH FILM DELIVERY DECAL	1
3	L21	5K796	10/24 x 3/4" TRUSS HEAD SCREW	4
4	813498		D-HANDLE FILM DOOR LATCH	1
5	L7	5K772	8/32 x 3/4" MACHINE SCREWS w/ LOCKNUTS	4
6	107310		TIMING BELT (STANDARD) 1/2"x 16.5"	1
7	L2	2F788	3/16" x 3/16" x 3/4 "KEYWAY	2
8	107316		16 TOOTH PULLEY(STANDARD)	1
9	107324		24 TOOTH PULLEY(STANDARD)	1
10	L80	4P206	3/8-16x 1 HEX HEAD CAP SCREWS	4
11	L64	2V102	3/8 LOCK WASHERS	4
12	L66	4P493	3/8 SAE WASHERS	4
13	406025		4000M-H-TP02 FILM TOP PLATE	1
14	120650		5/8 x 1-3/8 FLANGE BEARINGS	4
15	L145		5/8 SPRING WASHER	4
16	623065		4000M-H-R 20" BRAKE ROLLERS	2
17	120600		5/8 x 1-3/8 FLANGE BEARINGS	4
18	406028		4000M-H-D02 20" FILM DOOR ROLLER	2
19	406027		4000M-H-D03 FILM DOOR ROLLER SHAFT	2
20	406026		4000M-H-D 20" FILM DOOR	1
21	L58	3G816	5/16-18x 1 FLAT HEAD CAP SCREW	4
22	338712		HINGE PIN	1

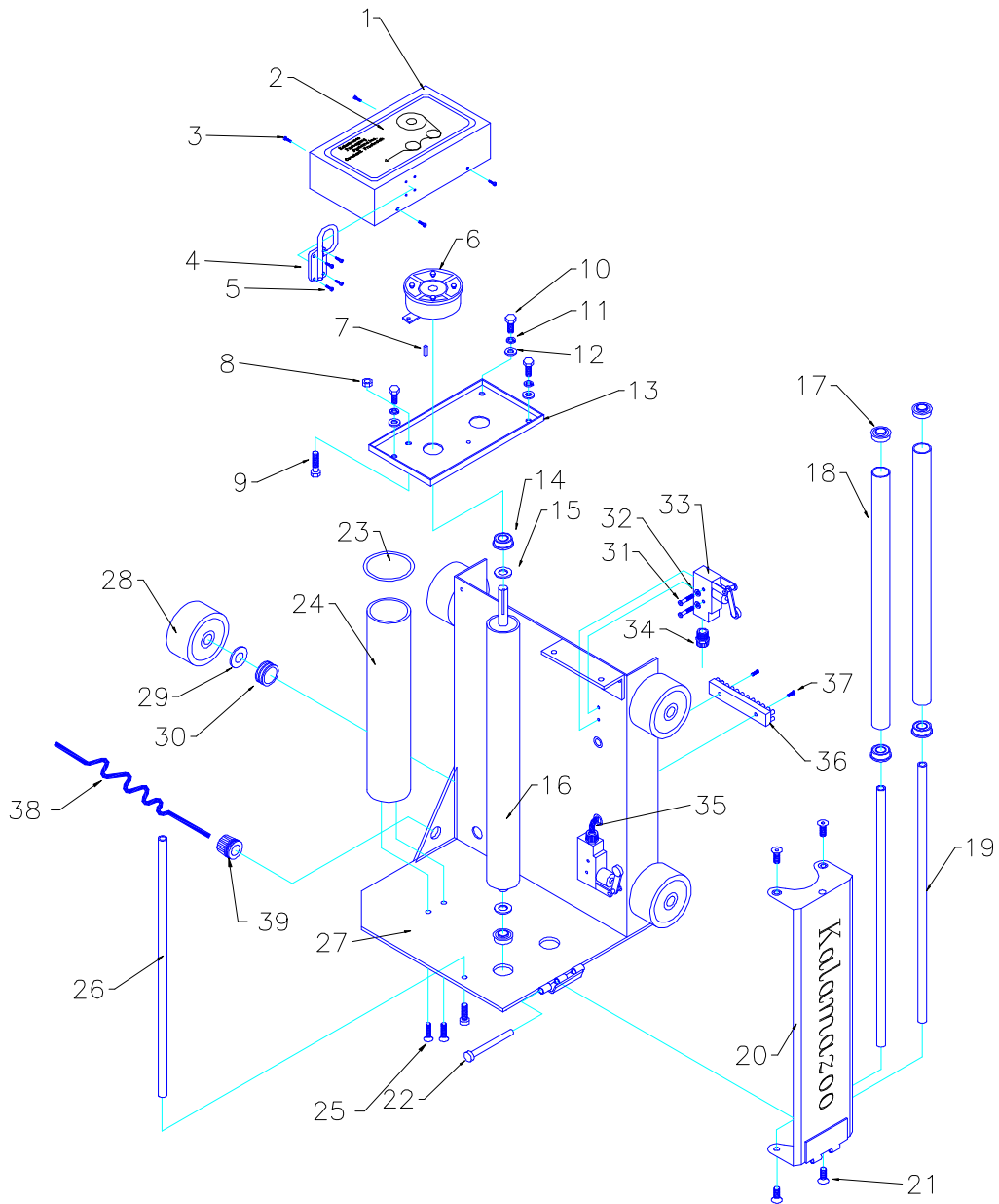
Kalamazoo Packaging Systems
PARTS MANUAL:
CONSTANT PRESTRETCH FILM DELIVERY

ITEM	PART#	GRAINGER	DESCRIPTION	QTY
23	120860		3" THRUST WASHER	1
24	991-15		2.95" DIA. x 15" FILM CORE	1
25	L55	3G820	5/16-18x 1-1/2 FLAT HEAD CAP SCREW	2
26	406022		4000M-H-R01 FILM HEAD SUPPORT SHAFT	1
27	406021		4000M-H-BP 20" FILM BASE PLATE	1
28	122250		4"x 1-1/2"X 3/4" CARRIAGE WHEELS	4
29	L161		CARRIAGE WHEEL SPRING	4
30	122250		CARRIAGE WHEEL SPACER 0.840'	4
31	L6		6/32x1-3/4" MACHINE SCREWS	4
32	L6a		#6 WASHER	4
33	210850	3A095	LIMIT SWITCH (ROLLER ARM)	2
34	210340		CORD GRIP	2
35	209850	1W661	16/3 SJ CORD	2
36	209700		12 TERMINAL STRIP	1
37			#6 x 3/4" SHEET METAL SCREWS	2
38	210053		16/7 COILED CORD	1
39	210357		1" CORD GRIP	1
40	L29		1/4-20 NYLOCK NUT	1
41	L32		1/4 USS WASHER	2
42	120700		3/4 x 1-3/8 FLANGE BEARING	2
43	107311		BELT TENSIONER SHAFT	1
44	L38		1/4-20x 1-1/2 HEX HEAD CAP SCREW	1

**PARTS MANUAL:
4000M-CP CONSTANT PRESTRETCH FILM DELIVERY
OPTIONAL TENSION PULLEYS AND BELTS**

ITEM	PART#	DESCRIPTION	QTY
		120% @ 28 PONUDS OF PULL	
8	107312	12 TOOTH PULLEY	1
9	107328	28 TOOTH PULLEY	1
	107311	BELT TENSIONING KIT	1
		110% @ 27 POUNDS OF PULL	
8	107312	12 TOOTH PULLEY	1
9	107324	24 TOOTH PULLEY	1
	107311	BELT TENSIONING KIT	1
		90% @ 25 POUNDS OF PULL	
8	107312	12 TOOTH PULLEY	1
9	107322	22 TOOTH PULLEY	1
	107311	BELT TENSIONING KIT	1
		70% @ 19 POUNDS OF PULL	
8	107314	14 TOOTH PULLET	1
9	107324	24 TOOTH PULLEY	1
	107311	BELT TENSIONING KIT	1
		50% @ 17-3/4 POUNDS OF PULLEY (STANDARD)	
8	107316	16 TOOTH PULLEY	1
9	107324	24 TOOTH PULLEY	1
		40% @ 16 POUND OF PULL	
8	107314	14 TOOTH PULLET	1
9	107320	20 TOOTH PULLEY	1
	107311	BELT TENSIONING KIT	1
		20% @ 11 POUNDS OF PULLEY	
8	107316	16 TOOTH PULLEY	1
9	107320	20 TOOTH PULLEY	1
	107311	BELT TENSIONING KIT	1

4000M-VT VARIABLE TENSION FILM DELIVERY



Kalamazoo Packaging Systems
PARTS MANUAL:
VARIABLE TENSION FILM DELIVERY

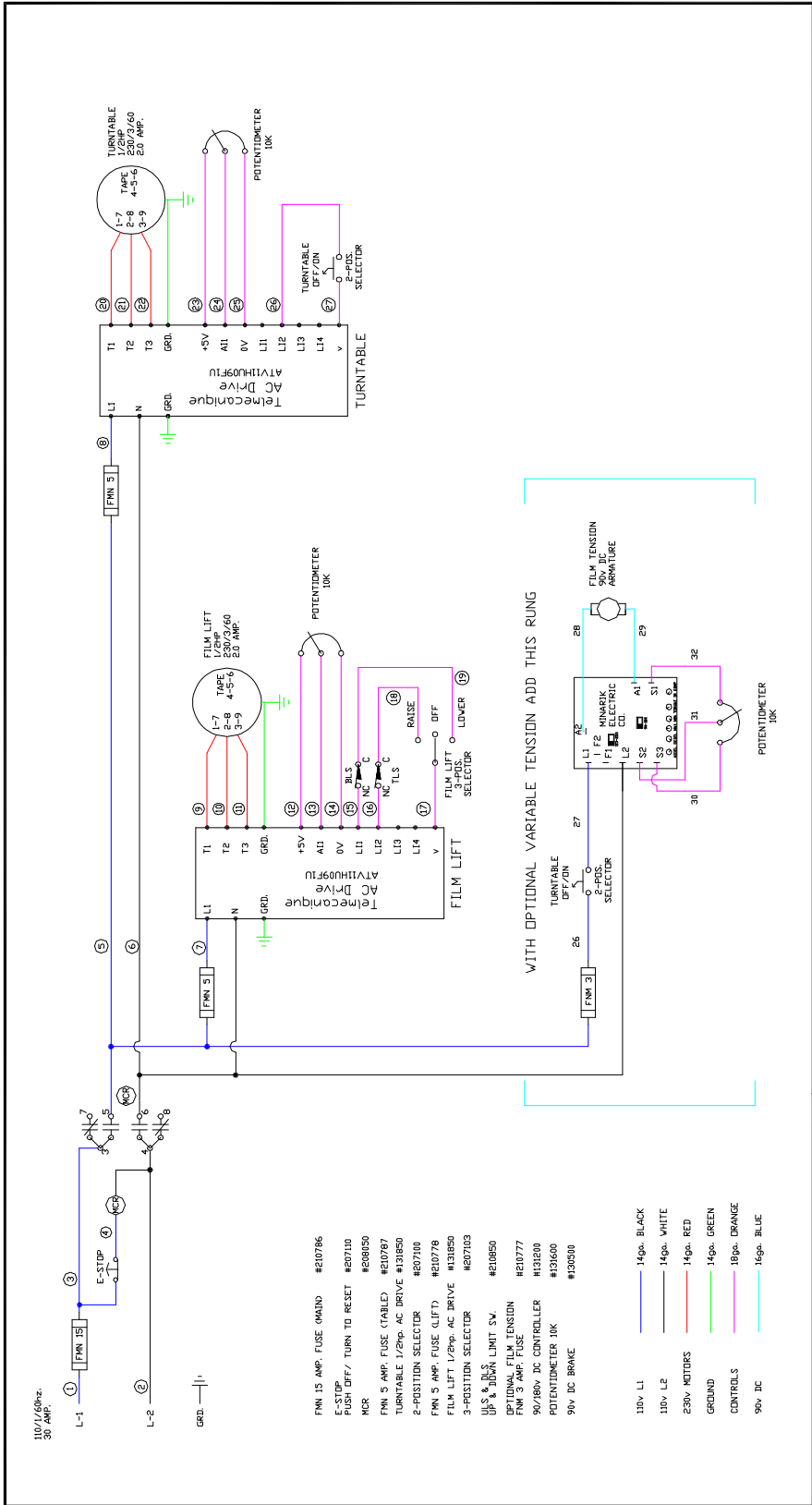
ITEM	PART#	GRAINGER	DESCRIPTION	QTY
1	406023		4000M-H-C FILM COVER	1
2	406024		FILM-VT VARIABLE TENSION FILM DELIVERY DECAL	1
3	L21	5K796	10/24 x 3/4" TRUSS HEAD SCREW	4
4	813498		FILM DOOR LATCH	1
5	L7	5K772	8/32 x 3/4" MACHINE SCREWS w/ LOCKNUTS	4
6	130500		3-3/4" 90v DC BRAKE	1
7	L2	2F788	3/16" x 3/16" x 3/4 "KEYWAY	1
8	L53		5/16-18 x 1-1/2" HHCS	1
9	L46		5/16-18 NUT	1
10	L80	4P206	3/8-16x 1 HEX HEAD CAP SCREWS	4
11	L64	2V102	3/8 LOCK WASHERS	4
12	L66	4P493	3/8 SAE WASHERS	4
13	406025		4000M-H-TP02 FILM TOP PLATE	1
14	120650		5/8 x 1-3/8 FLANGE BEARINGS	2
15	L145		5/8 SPRING WASHER	2
16	623065		4000M-H-R 20" BRAKE ROLLERS	1
17	120600		5/8 x 1-3/8 FLANGE BEARINGS	4
18	406028		4000M-H-D02 20" FILM DOOR ROLLER	2
19	406027		4000M-H-D03 FILMOOR ROLLER SHAFT	2
20	406026		4000M-H-D 20" FILM DOOR	1
21	L58	3G816	5/16-18x 1 FLAT HEAD CAP SCREW	4
22	338712		HINGE PIN	1

Kalamazoo Packaging Systems
PARTS MANUAL:
VARIABLE TENSION FILM DELIVERY

ITEM	PART#	GRAINGER	DESCRIPTION	QTY
23	120860		3" THRUST WASHER	1
24	991-15		2.95" DIA. x 15" FILM CORE	1
25	L55	3G820	5/16-18x 1-1/2 FLAT HEAD CAP SCREW	2
26	406022		4000M-H-R01 FILM HEAD SUPPORT SHAFT	1
27	406021		4000M-H-BP 20" FILM BASE PLATE	1
28	122250		4"x 1-1/2"X 3/4" CARRIAGE WHEELS	4
29	L161		CARRIAGE WHEEL SPRING	4
30	122249		CARRIAGE WHEEL SPACER 0.840"	4
31	L6		6/32x1-3/4" MACHINE SCREWS	4
32	L6a		#6 WASHER	4
33	210850	3A095	LIMIT SWITCH (ROLLER ARM)	2
34	210340		CORD GRIP	2
35	209850	1W661	16/3 SJ CORD	2
36	209700		12 TERMINAL STRIP	1
37			#6 x 3/4" SHEET METAL SCREWS	2
38	210053		16/7 COILED CORD	1
39	210357		1" CORD GRIP	1

**Available Options:
4000M-PM**

ITEM	PART#	DESCRIPTION	QTY.
		30" CONSTANT PRESTRETCH FILM DELIVERY	
16		4000M-H-R 30" BRAKE ROLLER	2
18	406028-30	4000M-H-D02 30" FILM DOOR ROLLER	2
19	406027-30	4000M-H-D03 30" FILM DOOR ROLLER SHAFT	2
20	406026-30	4000M-H-D 30" FILM DOOR	1
27	406021-30	4000M-H-BP 30" FILM BASE PLATE	1
		30" VARIABLE TENSION FILM DELIVERY	
16		4000M-H-R 30" BRAKE ROLLER	1
18	406028-30	4000M-H-D02 30" FILM DOOR ROLLER	2
19	406027-30	4000M-H-D03 30" FILM DOOR ROLLER SHAFT	2
20	406026-30	4000M-H-D 30" FILM DOOR	1
27	406021-30	4000M-H-BP 30" FILM BASE PLATE	1
		4000M RAMP	
		4000M SCALE RAMP	
		4000M POWERED WALKIE RAMP	
		4,000 lb. SCALE	
	241012	DISPLAY	1
	241011	SUMMING CARD	1
	241009	4K LOAD CELL	3
	241013	3" RUBBER LOAD CELL FEET	3



<p>Kalamazoo Packaging Systems, inc. Grand Rapids, Michigan</p>	<p>Name: 4000M-PM WIRING DIAGRAM</p>	<p>Dwg.No.: w4000M-PM-05</p>
	<p>Date: 02/20/03</p>	<p>Rev. Date: 06/29/05</p>
	<p>Drawn By: Ty Ferris</p>	<p>Rev. By:</p>

Tolerance:
X = 1/32 .XX = .01 .XXX = .003
THIS DRAWING IN DESIGN AND DEFAULT IS OUR PROPERTY. ALL DESIGN AND INVENTION RIGHTS ARE RESERVED.