

# Kalamazoo Packaging Systems

Division of Kal-Tek, Inc.

## **SUBJECT:**

### **890PM Powered Manual Horizontal Winder Stretch Wrap System.**



SHOWN WITH OPTIONAL POWERED BELT CONVEYORS

**DESCRIPTION:** A horizontal winder to wrap products with a maximum width of 91" and a minimum of 36" in length. Foot or selector switch operated variable speed wrapping ring with a 10-12" Kalamazoo variable tension film delivery and manual adjustable product hold downs.

**All KPS Horizontal Winders are fully guarded with expanded metal.**

**Wrap Cycle:** Place the product onto the infeed conveyor and/or slide table. Move the product into the Winder. Secure the film and push down on the foot switch or turn the Winder selector switch to on. After the reinforcing wraps are applied to the front edge of the product turn on the conveyors or slide product through the Winder. Place the reinforcing wraps to the tail end of the product. Let off on the foot switch or turn off the Winder selector switch. The operator will now cut and secure the film. End of cycle.

#### **Specification:**

Horizontal Winder: 5 hp. 230v AC variable speed motor with a right angle gear reducer. AC Solid state variable speed motor controller. 0-28.5 RPM, friction wheel drive. Floor to center of ring. 62.0"

Film Applicator: 10-12" Kalamazoo Variable Tension Film Delivery.

With 12" film at 28.5 RPM. This system will wrap 19.5 FPM

With 20" film at 28.5 RPM. This system will wrap 36.8 FPM

#### **Available Options:**

20" Variable tension film delivery

Product hold downs

Air powered product hold downs.

Manual adjustable product forks.

Powered adjustable product forks.

Automatic air powered product centering device that automatically move the product fork to the width of the product

890ST: 91" wide x 72" long slide table.

890G: 91" wide x 69.5" long gravity roller conveyor, rollers set on 6" centers.

890GC: Same conveyor as above with polyurethane covering.

890P: 89" wide x 69.5" long powered roller conveyor, rollers set on 6" centers.

890PC: Same conveyor as above with polyurethane covering.

890PB: 91" wide x 72" long powered belt conveyor.

890G-EZ: 91" wide x 113" long EZ-loader or unloader gravity roller conveyor with polyurethane covering and air lift cylinders.

890S-EZ: 91" wide x 113" long EZ-loader or unloader gravity roller conveyor with polyurethane covering and air lift cylinders. UHMW Plastic on top of upper bed so window can be spun around manually before being lowered for unloading.

890P-EZ: 89" wide x 113" long EZ-loader or unloader powered roller conveyor with polyurethane covering and air lift cylinders.

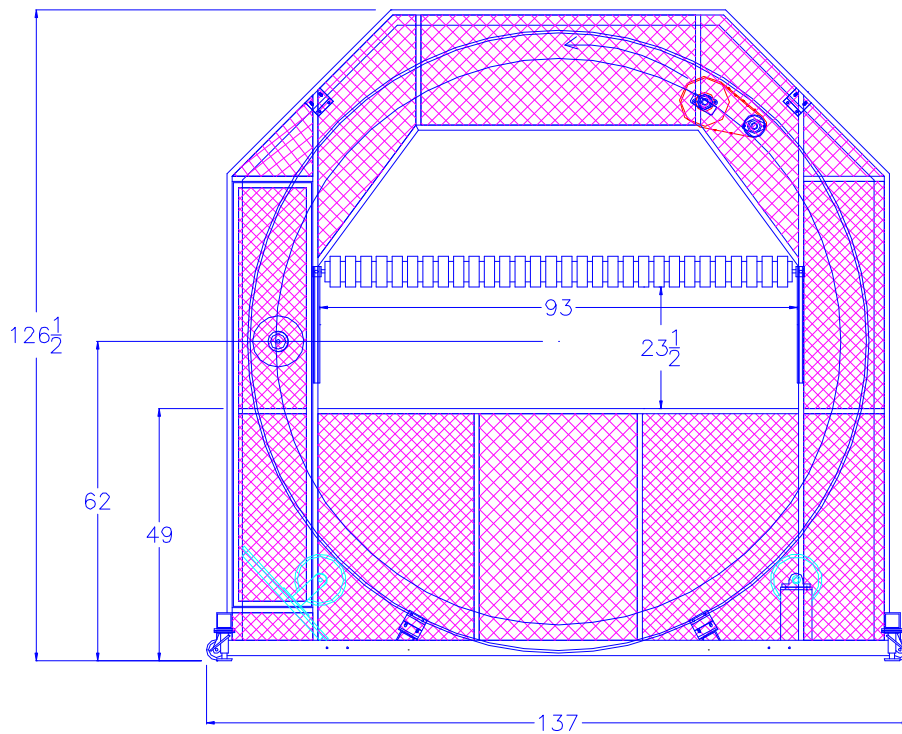
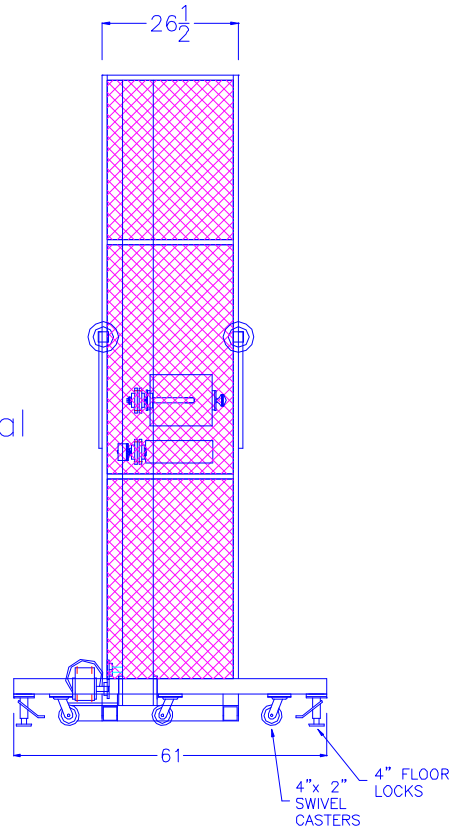
890PB-EZ: 91" wide x 113" long EZ-loader or unloader powered belt conveyor with polyurethane covering and air lift cylinders.

Casters, floor locks, and quick disconnects for Winder.

Total lock swivel casters for conveyors with quick disconnects.

Custom color

Kalamazoo  
Packaging  
Systems  
Model# 980PM  
890 Powered Manual  
Horizontal Winder.



( SHOWN WITH OPTIONAL CASTERS & FLOOR LOCKS )