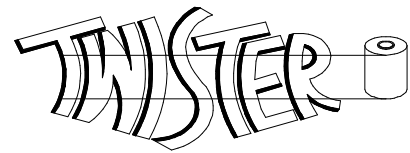


Kalamazoo
Packaging Systems



Model #600LW
Portable Luggage Wrapper



OPERATOR'S
MANUAL

Kalamazoo
Packaging Systems

Table of Contents

Introduction	3
Warranty	3
Assembly	4
Set-up	4
Film loading Constant Prestretch	5
Film loading Variable Tension	5
Controls	6
Operating Instructions	6
Maintenance	7
Trouble Shooting	7
Programming the AC Drives (Telemecanique)	8
Optional Variable Tension Controller	8
System parts list	9-15
Wring Diagram	16-18

Introduction

Congratulations! Your purchase of a **Kalamazoo Model 600LW Luggage Wrapper** will provide you with years of efficient stretch wrapping service. Your investment will ensure that your customers luggage will arrive cleaner, with less damage and pilferage at their destination at a lower cost to you.

Warranty

Kalamazoo Packaging Systems products carry a LIMITED LIFETIME WARRANTY on all KPS manufactured components; all parts **not** manufactured by Kalamazoo Packaging Systems will be subject to the original manufacturer's warranty.

Kalamazoo Packaging Systems, Inc. (KPS) agrees to furnish the purchaser, without charge, F.O.B. the factory, any part found to be defective in either material or workmanship during the warranty period, provided the purchaser gives immediate notice of any defect and description of the defect to KPS. KPS reserves the right to inspect any defective part to verify the defect and to determine probable cause of same.

The liability of Kalamazoo Packaging Systems, Inc. under this warranty is limited to furnishing replacements for defective parts, and unless otherwise agreed to in writing, the purchaser shall bear the expense of installation.

Failure of equipment or parts due to abuse, misuse, neglect, incorrect operating techniques or power line drops or surges shall not constitute failure because of defective material or workmanship, and are expressly excluded from the warranty.

The above is the only warranty with no other guarantees which extend beyond the above and the seller disclaims any implications including but not limited to a warranty of merchantability.

Assembly

Your **600LW** Luggage Wrapper has been assembled and tested at our manufacturing plant and released for shipment by a qualified technician. If the unit was shipped via common carrier, it will be on a pallet. If the unit was delivered by our truck or by your distributor's truck it may not be placed on a pallet. **Any damage done in transit should be reported to the carrier immediately.** All shipments are sent F.O.B. Grand Rapids, Michigan, therefore; the customer is responsible to settle any damage claims with the transportation company. **Kalamazoo Packaging Systems** will do everything possible to assist you in these matters.

Once the machine was cleared for shipment at the factory, It was put on a pallet and wrapped completely assembled . No electrical wires were removed or disconnected for shipping.

Remove the unit from the pallet. The machine is now ready for operation and should be plugged into an independent 115 volt, 15 amp. power source. (System shipping out of the USA that require 220/1/50-60Hz. Will be shipped without a cord cap.)

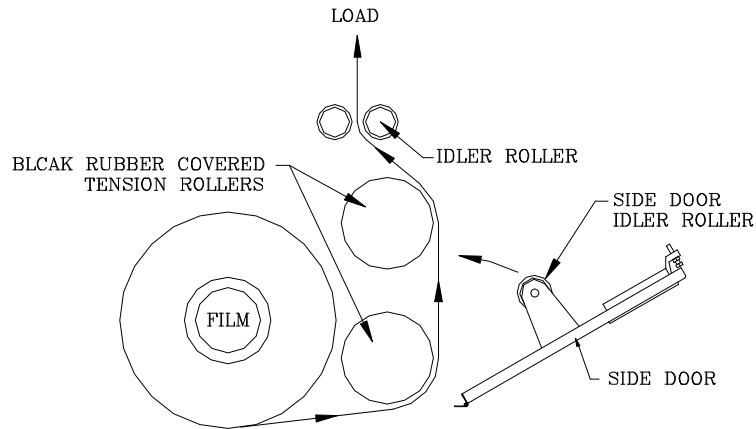
NOTE: The use of an extension cord may reduce the efficiency and life of the machine and is not recommended.

Set-up Procedures

The film dispenser and turntable are designed to run smoothly together. Before wrapping the first product, check the turntable. Plug the system in and push the Start button. After the turntable has stopped set the luggage on the Turntable fixture, make sure it is centered. Push the Start button to jog the turntable to check clearances. Push the Stop button to stop the Turntable

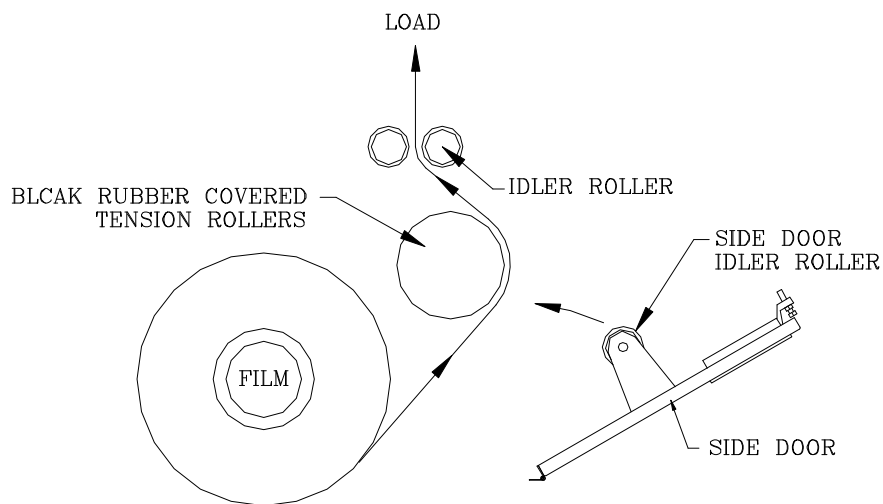
Loading the film Constant Prestretch

If your wrapper is equipped with our **Kalamazoo** Constant Prestretch Film Delivery System, open the back door and tilt out the film core, load a roll of 30" stretch film on the film core holder (Do not drop the film onto the film core). Tilt the film back in and open the side door, thread the film counter-clockwise around the two black rubber covered tension rollers and clockwise around the first white idler roller. Close both doors. The film is loaded and the system is ready to wrap.



Loading the film Variable Tension

If your wrapper is equipped with our **Kalamazoo** Variable Tension Film Delivery System, open the back door and tilt out the film core, load a roll of 30" stretch film on the film core holder (Do not drop the film onto the film core). Tilt the film back in and open the side door, thread the film counter-clockwise around the black rubber covered tension roller and clockwise around the first white idler roller. Close both doors. The film is loaded and the system is ready to wrap.



Controls

- 1) Touch Screen - The touch screen will display many things.
 1. Plug the system in, after about 30 sec. the touch screen will light up.
 2. The START button, STOP button, and the Turntable Speed Dial will appear.
On the bottom of the this screen will be WRAP SCREEN.

Operating Instructions

- 1) Plug the system into a independent 110/1/50-60Hz. Standard wall outlet.
- 2) The touch screen display will light up.
- 3) Load the stretch film per page 5.
- 4) Set the product to be wrapped on the luggage holder.
- 5) Slide the luggage holder bar in to securely the product.
- 6) Attach the film to the product securely.
- 2) Push the START button on the touch screen.
- 3) If you need to stop the system. Push the STOP button.
- 3) You will need to hold the product as it is being wrapped
- 4) Adjust the optional film tension control knob to obtain the correct amount of film stretch. (Variable Tension Only)
- 6) After the product is wrapped cut the film and smooth the end against the load. The film's inherent cling will hold the film in place.
- 11) End of wrap cycle.

Maintenance

- 1) Check and tighten any loose fasteners.
- 2) Check all electrical connections and replace any worn or frayed cords.
- 3) Lubricate and adjust the turntable drive chains every three (3) months. Chain should be lubricated with a penetrating type commercial chain lube. (Do not over tight the turntable chain)
- 5) Lubricate pillow blocks with #2 grease every six months.
- 8) Keep the area clean around the system and all moving parts.
- 9) Remove film built up under the turntable disc.

Troubleshooting

When any problem develops, review the operating instructions.
Diagnose specific problems and review the options below.

Unplug the system, wait for 1 min.. This will denergize the AC drives and reset a fault.

Plug the system back in.

Check wall receptacle for power.

Check all cords for cut. (Fork Lift Trucks damage cords.)

Check under the turntable disc to make sure film is not wrapped around the center shaft, sprocket and/or the autostop limit switch. This will cause the turntable disc to stop in the wrong place or not stop at all.

If the load does not stop in the right place after the wrap is complete. Remove the load and run the system trough a dry cycle. The next load should stop at the same place as it was loaded.

DISCONNECT POWER FROM MACHINE

- ☞☞ Check the turntable limit switches for damage, sticking, or internal shorts.
- ☞ ☞ Remove the top cover. Visually inspect for loose wires and for signs of arcing or burning of any of the components.
- ☞ Check belt tension.
- ☞ Check optional variable tension brake controller for AC in and DC out.
- ☞ Check brake pads.
- ☞ Check for damage cords.
- ☞ Check the AC drive for errors.

It is advisable to call for technical assistance at this point.

Technical and Customer Service is available from Kalamazoo Packaging Systems, Monday through Friday 7:30 A.M. to 4:00 P.M. (EST). Stock is maintained on parts to allow us to ship the same day on most orders. If you have a problem, we want to know about it! Please call and report any difficulties you may encounter.

- Local - (616) 534-2600 • National - (800) 253-4625
E-mail –kzoo@iserv.net

Telemecanique ATV 12 AC Drive Programming

To change a parameter in the AC Drive.

1. Press the Jog Dial to get into the parameter you would like to change.
2. Turn the Jog Dial to change the code.
3. Press the Jog Dial to enter into the code.
4. Turn the Jog Dial to change the value.
5. Press the Jog Dial to enter the value.
5. Press the ESC key until the drive read (rdy) .

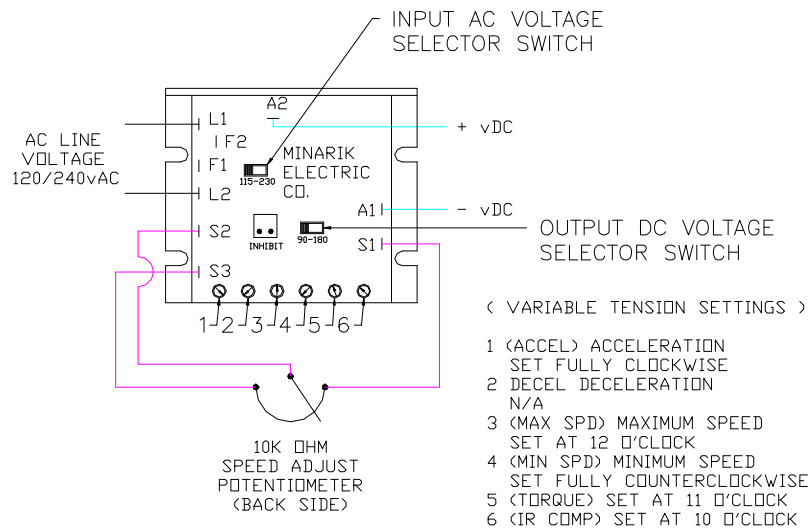
4000M-SA Turntable Drive

ConF Mode

Code		Setting
ACC	Acceleration	3.0
dEC	Deceleration	3.0
Full	drc	
bFr	Motor Frequency	60
tUn	Auto Tuning	yes
Sfr		2.0

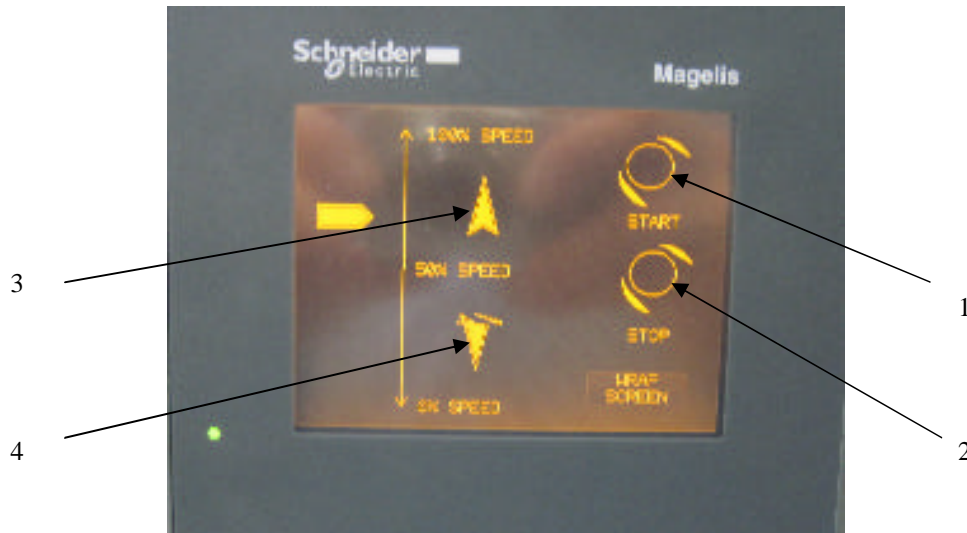
Optional Variable Tension Brake Control

VARIABLE TENSION FILM DELIVERY DC CONTROLLER SETTINGS



Easy Start Up

1. Plug the system in, the touch screen will come on and look like this.
The touch screen startup time is about 30 seconds.

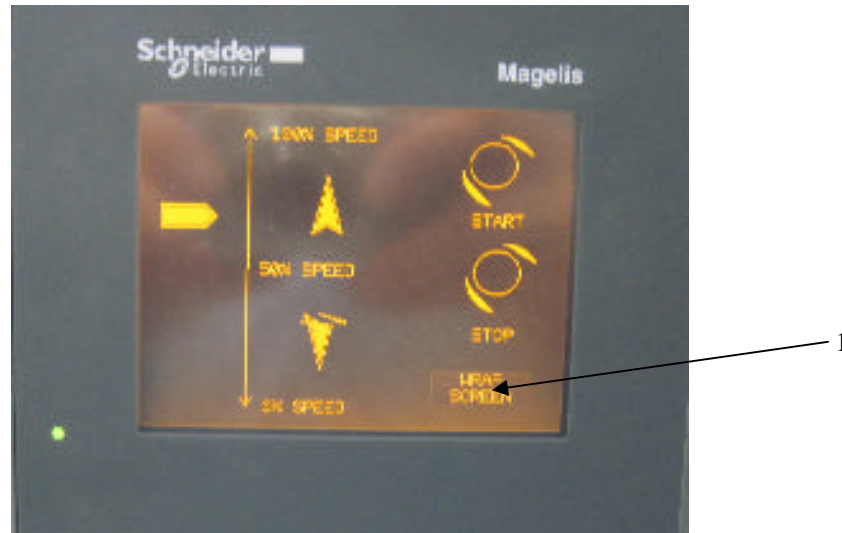


The system is ready.

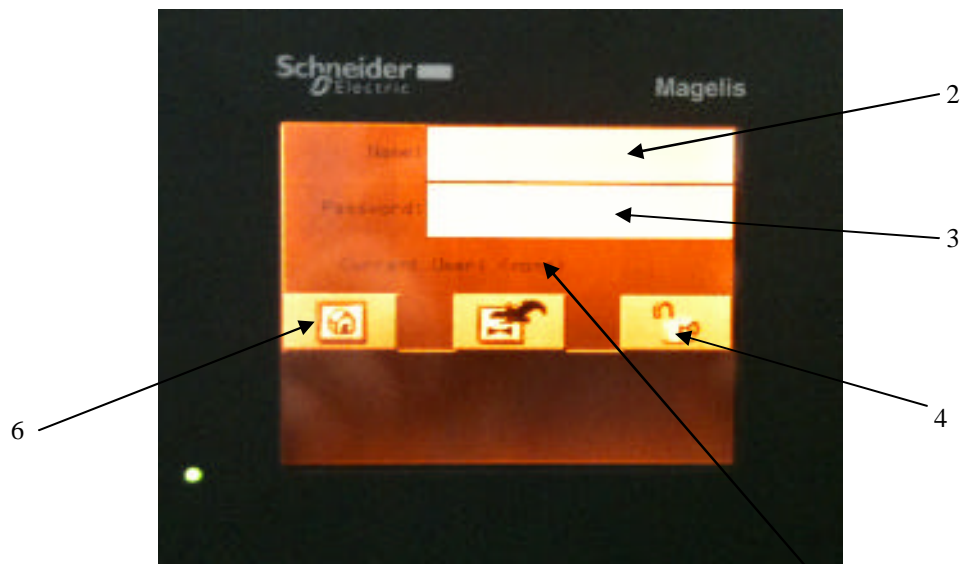
2. Attach the film.
3. Push the **START** button (1), the turntable will turn for 3 revolutions.
If you would like to change the amount of revolutions see page 15
4. If you are in the middle of wrapping a bag and you need to stop the wrapper push the **STOP** button (2).
5. To change the turntable speed push the up arrow (3) to go faster and the down arrow (4) to go slower.

To check the number of luggage wrapped each day

1. The owner, at the end of the day the owner will need to push the WRAP SCREEN button (1).

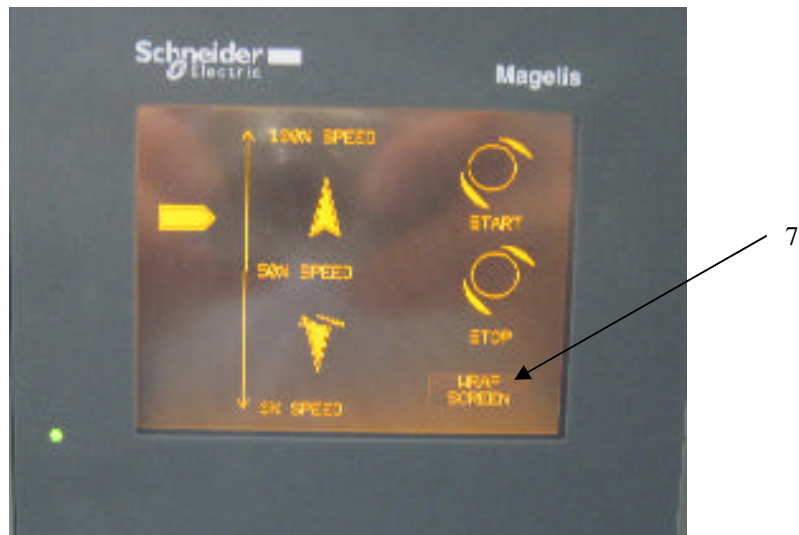


The screen will change to the login screen

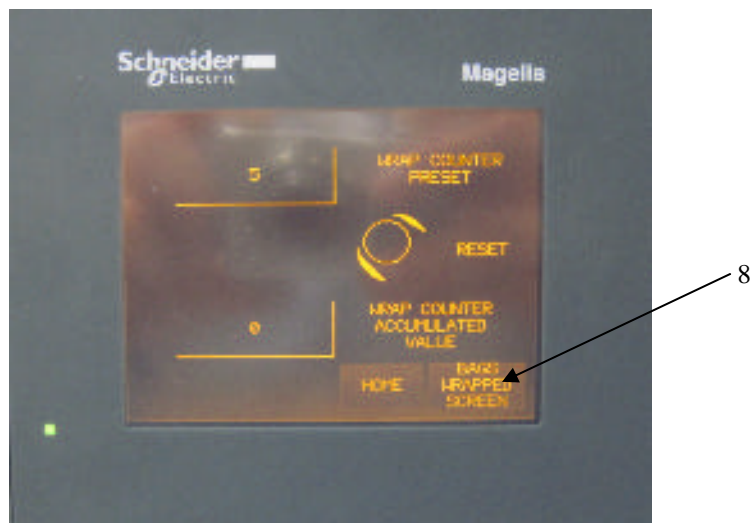


2. Enter User Name (owner) push name bar (2)
3. Enter User Password (5678) push password bar (3)
4. Push the padlock icon (4).
5. Current User Should read (owner) (5)
6. Push the Home icon. (6)

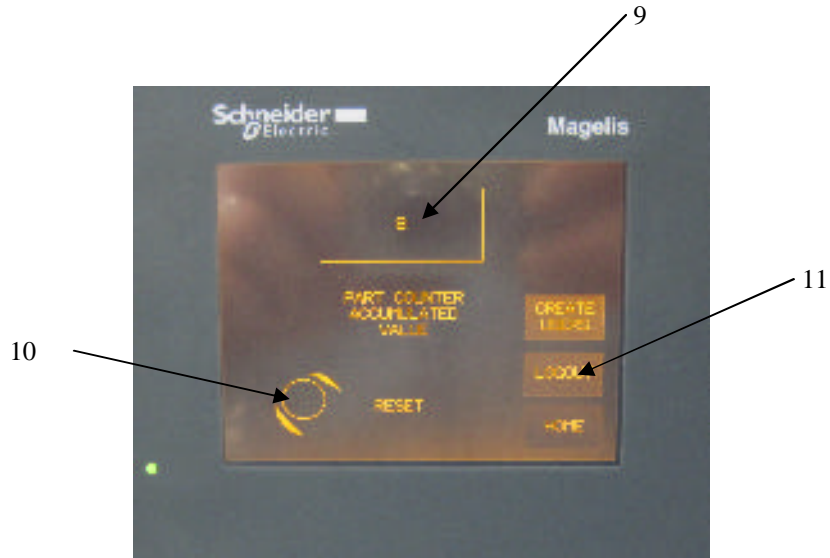
7. Push the WRAP SCREEN button (7).



8. Push the BAGS WRAPPED SCREEN button (8).



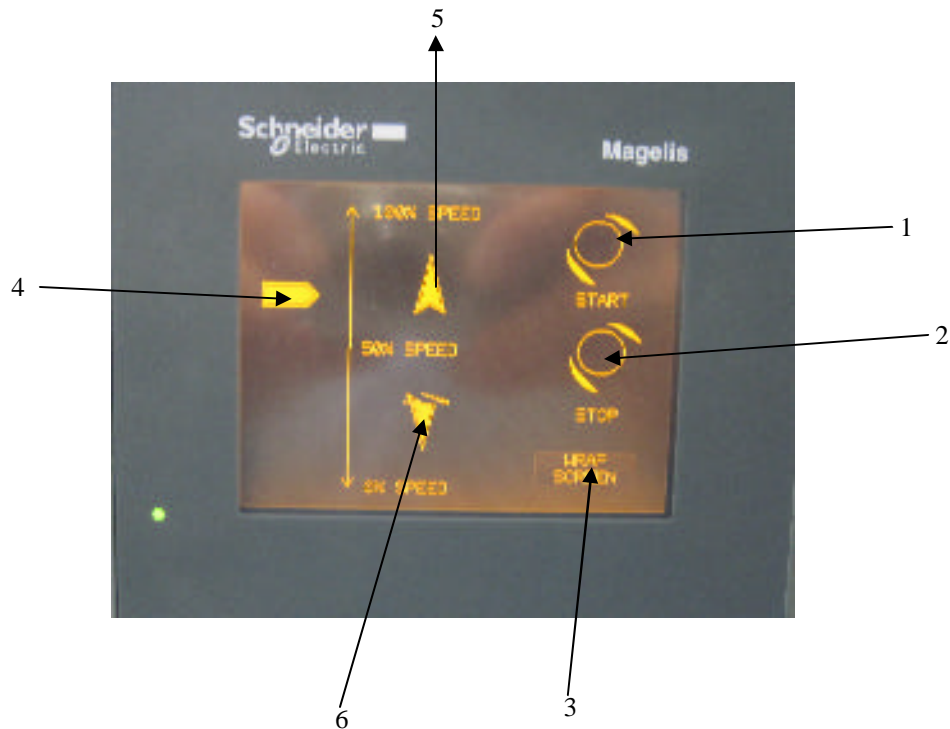
9. Log the number of PART COUNTER ACCUMULATED VALUE.



10. After logging the number of bags wrapped push the RESET button.

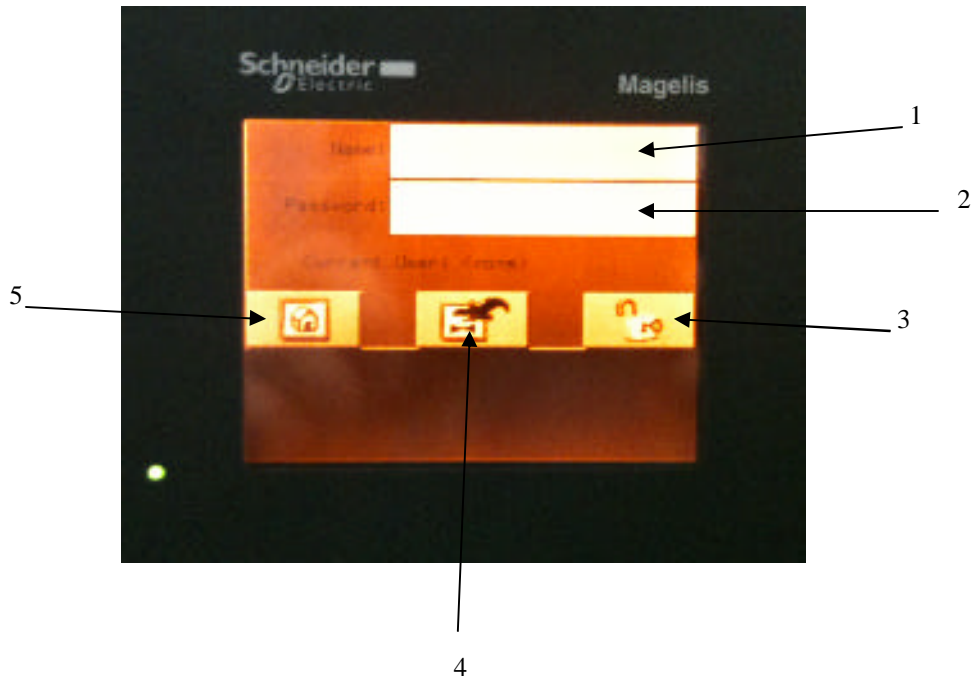
11. Push the LOGOUT button. Make sure you logout.

HOME/MAIN SCREEN



1. Start Button used to start the wrap process
2. Stop button used to stop the wrap process in the middle of the cycle
3. Wrap Screen button used to set the number of wraps to apply to the luggage. This button will be explained in more detail on the Wrap Screen page
4. Turntable speed selector allows you to select the speed you want to wrap based on placing your finger anywhere between 0% and 100% range.
5. Up arrow for turntable speed is used to fine adjust up the turntable speed by pressing on the arrow
6. Down arrow for turntable speed is used to fine adjust down the turntable speed by pressing on the arrow.

PASSWORD LOGIN SCREEN



1. This is where you put in your user name. Keep in mind that this is case sensitive.
2. This is where you put in your password. Keep in mind that this is case sensitive.
3. Once you put in your user name and password you must hit this key to enter that information and then the current user will display your user name.
4. This button allows you to go back to the previous screen you were on.
5. This button will take you to the home screen.

This machine comes with two factory default profiles. Each of these profiles have different security levels as well. I will explain this in more detail on the User Manager page. Below are the two default profiles.

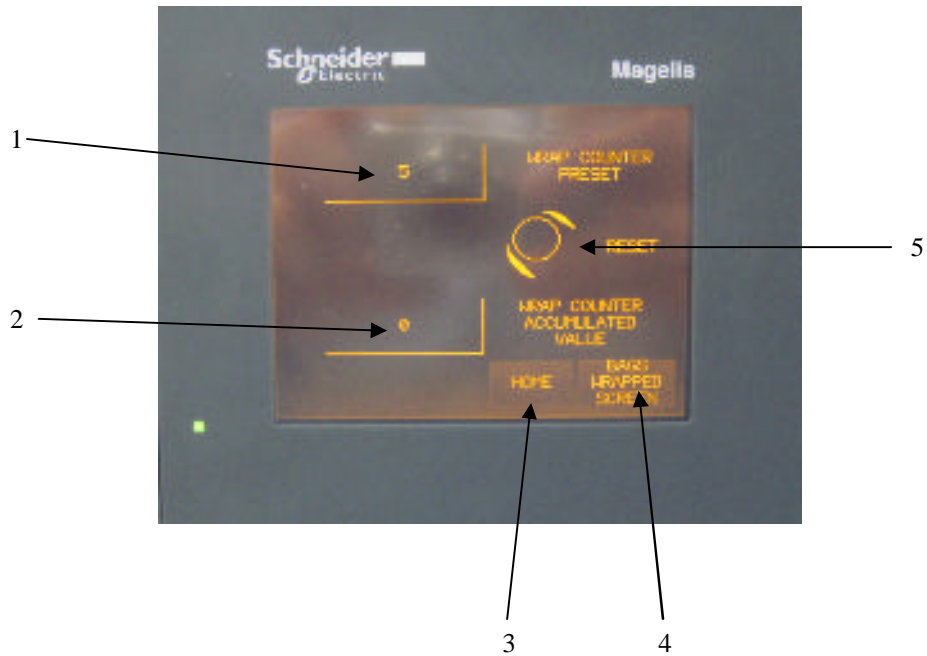
Security Group 1 (Minimal Access)

User Name: USER
Password: 1234

Security Group 2 (All Access)

User Name: OWNER
Password: 5678

WRAP SCREEN



1. Wrap count box, which shows how many wraps to apply to the luggage. If you press on the box a window will come up to allow you to change that number. Once the number is chosen you must hit enter to apply it. Keep in mind that this value must be at least 1 for the turntable to wrap the luggage. The next page shows how to do this.

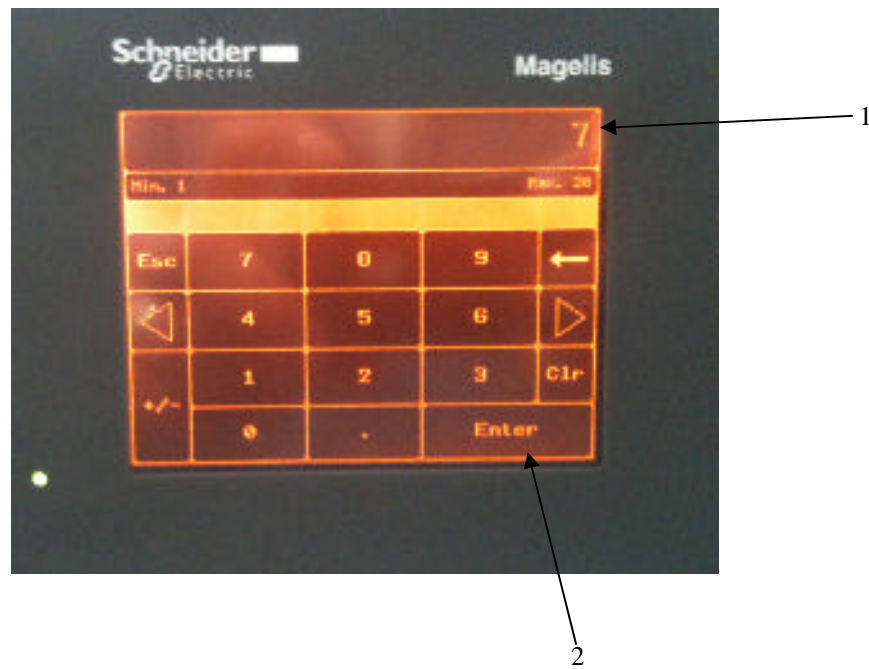
2. This window shows how many wraps were applied to the last piece of luggage.

3. This is the home button that will take you back to the main home screen.

4. This button will take you to the main wrap counter history page. This will be explained in more detail on the page that is about that screen.

5. This is the reset button for the wrap count box and the accumulated counter box. This will reset both there values to 0. Keep in mind that if the wrap counter preset is 0 the machine will not wrap the luggage.

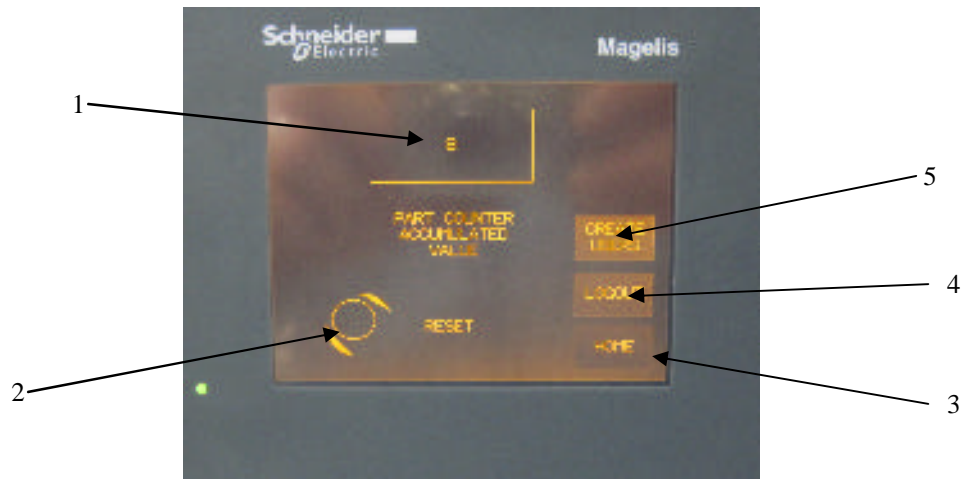
ENTERING # OF WRAPS



1. This shows the value entered. If this number is correct press the enter key and it will go back to the wrap screen.

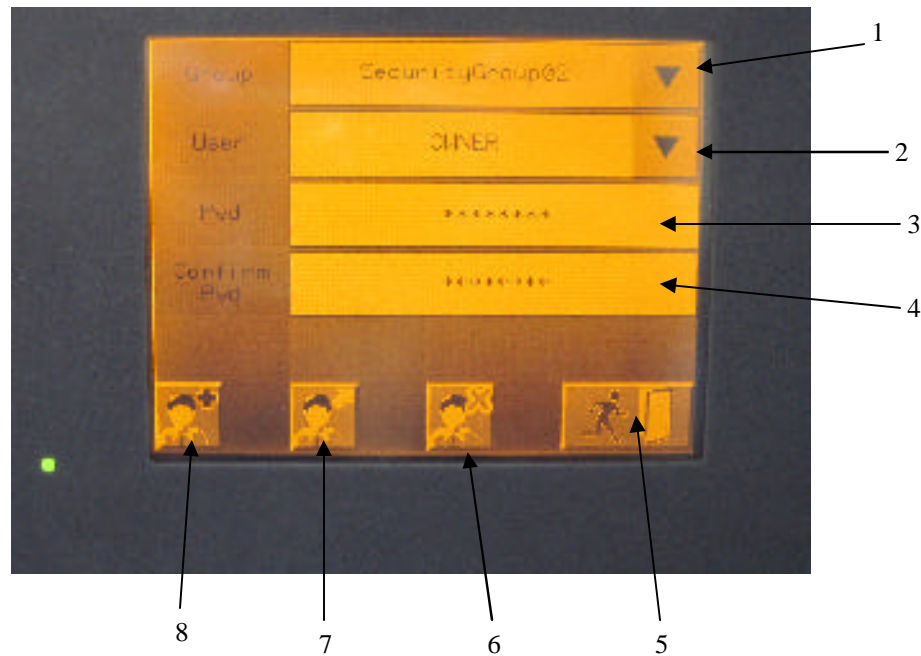
2. This is the enter key you must hit to enter the number you selected.

BAGS WRAPPED SCREEN



1. This field shows how many bags have been wrapped since the last reset was done. This will allow you to monitor the number of bags that are wrapped per day. This screen is password protected so your employees can't reset it unless you allow them access.
2. This is the reset button for the field above.
3. This is the home button that will take you back to the main home screen.
4. This is the logout button that should be used once you have viewed the screen and reset the counter. If you don't logout then anyone can get access to this.
5. This allows you to create new users and also create their security level. This will be explained more on the next page when we talk about this screen.

MANAGE USERS SCREEN



1. This is where you choose your security level for the user you are creating. Security group 1 only allows access to the wrap screen. Security group 2 allows access to everything. I would only recommend allowing the owner access to security group 2. Keep in mind that if you just want someone to run the machine they don't need a user name and password to run.

2. This is where you can use the down arrow to choose an existing user or push on the name that's currently displayed and you can type in a new user name.

3. This is where you can enter a new password.

4. This is where you must confirm the password above again.

5. This is the exit key out of this screen.

6. This is where you can delete a user. Make sure you don't delete the owner profile until you create a new one with the security level 2! If you do you will lock yourself out of these screens for good! After you create a new owner profile use the exit key and logout. Then try your new user and password to verify it works before deleting the old one.

7. This key is used to edit an existing user. You must choose the existing user from the drop down arrow. Then edit the name and password or just one of them and then hot this key.

8. This key is used to add a new user profile. You must fill in all the fields before pushing this button. So you would choose your security group, then create a user name, then create a password and confirm it. Now you will push the add button to apply this. Make sure once you do this you use the exit key and then logout. Then log back in under the new user you created to verify it works!

Security Level 1 only allows access to the wrap screen and nothing else

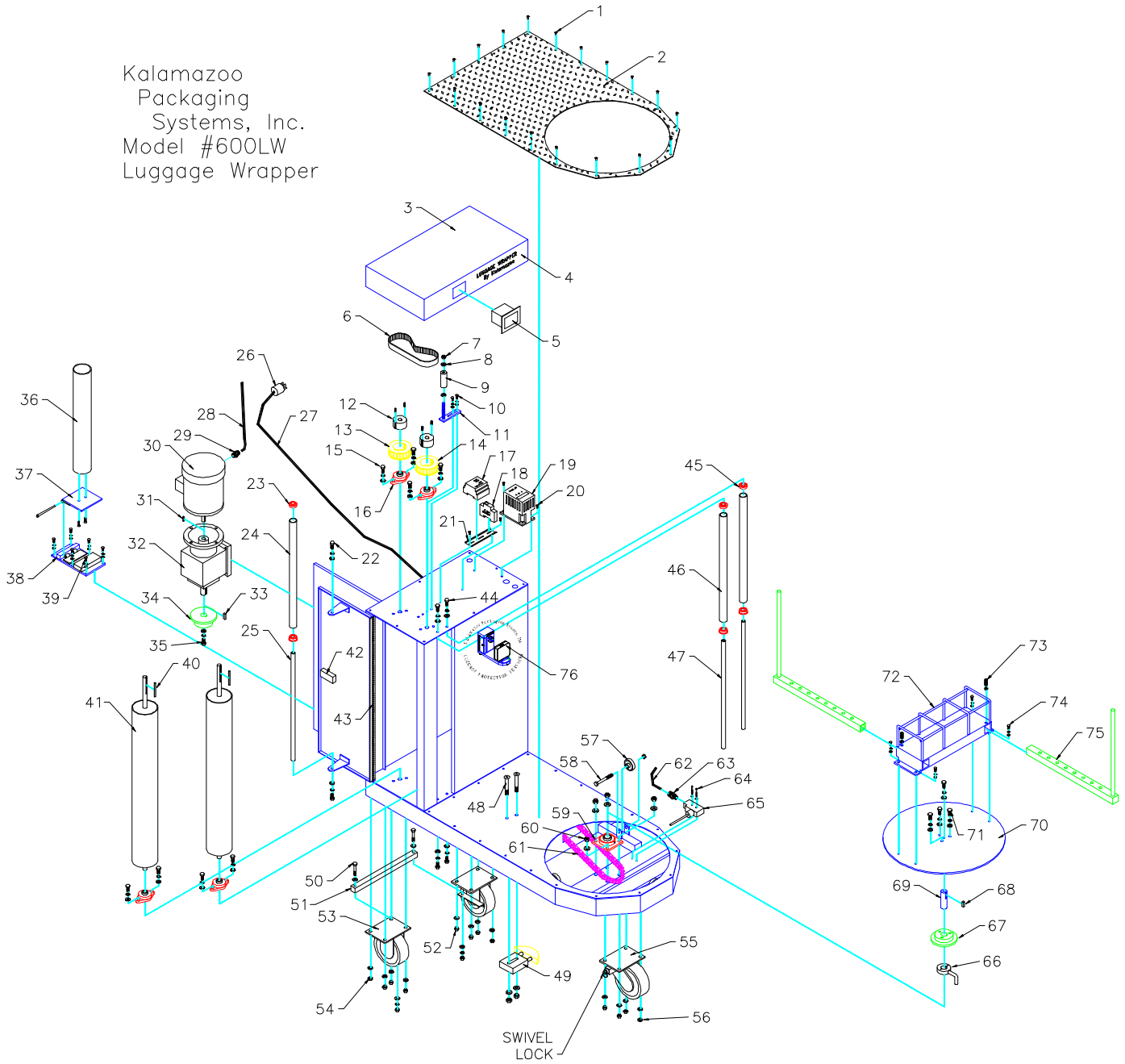
Security Level 2 allows access to everything including this screen.

Make sure you only allow a trusted person Security Level 2 access. Otherwise they can change anything without your knowledge!!

Kalamazoo

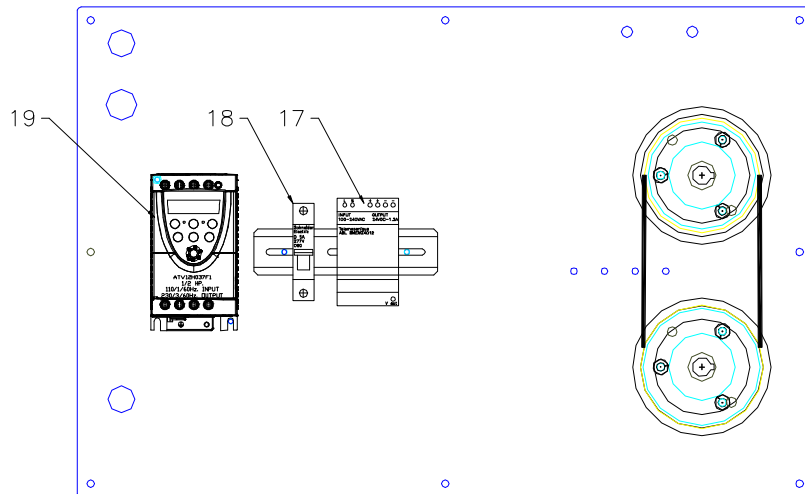
Packaging Systems

Kalamazoo
Packaging
Systems, Inc.
Model #600LW
Luggage Wrapper



Kalamazoo
Packaging Systems

Kalamazoo
Packaging
Systems, Inc.
Model #600LW
Luggage Wrapper
Control Panel



Kalamazoo Packaging Systems

Parts manual: 600LW Luggage Wrapper

ITEM	PART#	DESCRIPTION	QTY.
1	F80x1/2	3/16"x 1/2" Stainless Steel Pop Rivets	19
2	600LW-BASE-12S	Painted Steel Deck Plate	
2	600LW-BASE-12A	Aluminum Diamond Plate Deck	
2	600LW-BASE-12SS	Brushed Stainless Steel Deck Plate	
3	600LW-TOWER-09	Top Cover	1
4		Customer custom Name Decal	
5	1400000	3.8" Touch Screen	1
6	1073854	Constant Prestretch Drive Belt	1
7	F1505	3/8-24 Nylock Nut	1
8	F1316	3/8" USS Washer	2
9	600LW-TOWER-08	1" Round UHMW x 2-3/8"	1
10	F912, F720, F722	1/4-28X 3/4" H.H.C.S., 1/4" Lock Washer 1/4" SAE Washer	2
11	600LW-TOWER-08	Constant Prestretch Belt Tensioner Slide	1
12	1073300	Taper lock Bushing	2
13	1073324	24 Tooth Pulley	1
14	1073322	22 Tooth Pulley	1
15	F1512, F1315, F151317	3/8-24x 1" H.H.C.S., 3/8" Lock Washer 3/8" SAE Washer	8
16	1210515	5/8" 2-Bolt Flange Bearing	4
17	1311712	24vDC Power Supply 1.2amp.	1
18	2110510	5amp. 1-Pole Breaker	1
19	1318501	1/2hp. AC Drive 110/1/60Hz. Input	1
20	F440	10/32x 3/4" T.H.	4
21	2094000	Din Rail	1
22	F1333, F1315, F1317	3/8-16x 1" H.H.C.S., 3/8" Lock Washer, 3/8" SAE Washer	2
23	1206000	5/8" I.D. x 1-3/8" O.D. Flange Bearing	2
24	600LW-TOWER-04C	1-1/4" PVC Tube x 31"	1
25	600LW-TOWER-04C	Side Door Idler Roller Shaft	1

Kalamazoo Packaging Systems

Parts manual: 600LW Luggage Wrapper

ITEM	PART#	DESCRIPTION	QTY.
26	2101500	Cord Cap	1
27	2099000	14/3 SJ Cord x 18'	1
28	2099050	14/4 STO Cord	1
29	2103400	Cord Grip	1
30	1053130	1/2hp. 230-460/3/60Hz. Motor	1
31	F10x3/4	3/16"sq. x 3/4" Keyway	1
32	1059800	Inline Reducer	1
33		3/16"x 5/16" x 1.5" Keyway	1
34	1080300	50B18x 1" Sprocket	1
35	F1333, F1315, F1318	3/8-16x 1" H.H.C.S., 3/8" Lock Washer, 3/8" Fender Washer	1
36	6230810	2.95" Diameter x 20" Film Core	1
37	600LW-TOWER-11A	Film Core Top Plate	1
38	600LW-TOWER-11B	Film Core Bottom Plate	1
39	F912, F720, F722	1/4-28X 3/4" H.H.C.S., 1/4" Lock Washer 1/4" SAE Washer	6
40	F10x2	3/16"sq. x 2" Keyway	2
41	600LW-TOWER-12	4" Film Tension Roller	2
42	6238110	Door Latch w/ Key	2
43	600LW-TOWER-04D	Piano Hinge x 33"	2
44	F1333, F1315, F1317	3/8-16x 1" H.H.C.S., 3/8" Lock Washer, 3/8" SAE Washer	4
45	1206000	5/8" I.D. x 1-3/8" O.D. Flange Bearing	4
46	600LW-TOWER-14	1-1/4" PVC Tube x 33.125"	1
47	600LW-TOWER-14	Idler Roller Shaft	1
48	F1657,F1617, F1605	7/16-14x 2" F.H., 7/16" SAE Washer, 7/16-14 Nylock Nut	2
49	1085085	#50 Chain Tensioner	1
50	F1035, F1016,	5/16-18x1-1/2" H.H.C.S., 5/16" USS Washer,	2
51	600LW-BASE-14	Rear Wheel Brake Lever	1
52	F1016, F1015, F1000	5/16" USS Washer, 5/15" Lock Washer. 5/16-18 Nut	2

Kalamazoo Packaging Systems

Parts manual: 600LW Luggage Wrapper

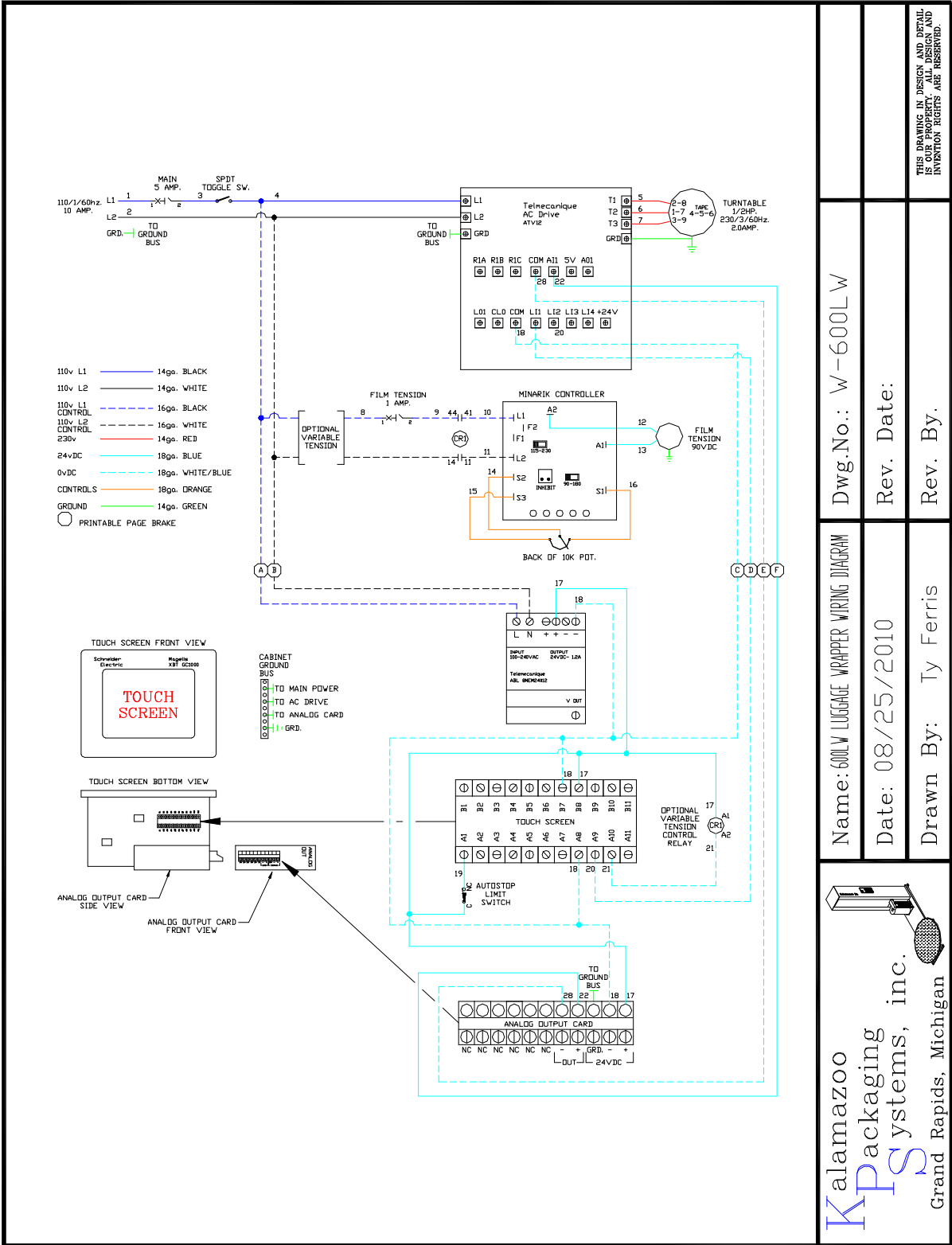
ITEM	PART#	DESCRIPTION	QTY.
53	1226050	6x2 Rigid Caster w/ Brake	2
54	F1305, F1317	3/8-16 Nylock Nut, 3/8" SAE Washer	8
55	1226060	6x2 Swivel Caster w/ Lock	1
56	F1305, F1317	3/8-16 Nylock Nut, 3/8" SAE Washer	4
57	1219550	2" Turntable Rollers	3
58	F1939 , F1906	1/2-13x 2-1/2" gr.8 H.H.C.S., 1/2-13 Jam Nut	3
59	1211400	1" 4-Bolt Flange Bearing	1
60	F1617, F1605	7/16 SAE Washer, 7/16-14 Nylock Nut	4
61	1085000	#50 Chain x 93-3/16" Plus Master Link	1
62	2098500	16/3 SJ Cord	1
63	2103551	7/8" Cord Grip	1
64	F210	6/32x 1-3/4" M.S.	2
65	2108510	Limit Switch (Spring Arm)	1
66	600LW-BASE-15	Auto-Stop Cam	1
67	600LW-BASE-13	50B20x 1" Driven Sprocket (Modified)	1
68	F20x1	1/4"sq. x 1" Keyway	1
69	600LW-BASE-14	Drive Shaft	1
70	600LW-BASE-11	Turntable Disc	1
71	F1333, F1315, F1317	3/8-16x 1" H.H.C.S., 3/8" Lock Washer, 3/8" SAE Washer	4
72	600LW-FIXTURE-06B	Luggage Wrapper Fixture	1
73	F1378, F1300, F1317	3/8-16x 1" S.S., 3/8-16 Nut, 3/8" SAE Washer	2
74	F727, F720, F722	1/4-20x 3/4" H.H.C.S., 1/4" Lock Washer, 1/4" SAE Washer	4
75	600LW-FIXTURE-07	Luggage Wrapper Fixture Bars	2
76		Customers Custom Logo	1

Kalamazoo Packaging Systems
Parts manual: 600LW Luggage Wrapper
Constant Perstretch Film Delivery
Optional Film Tension Pulleys and Belts.

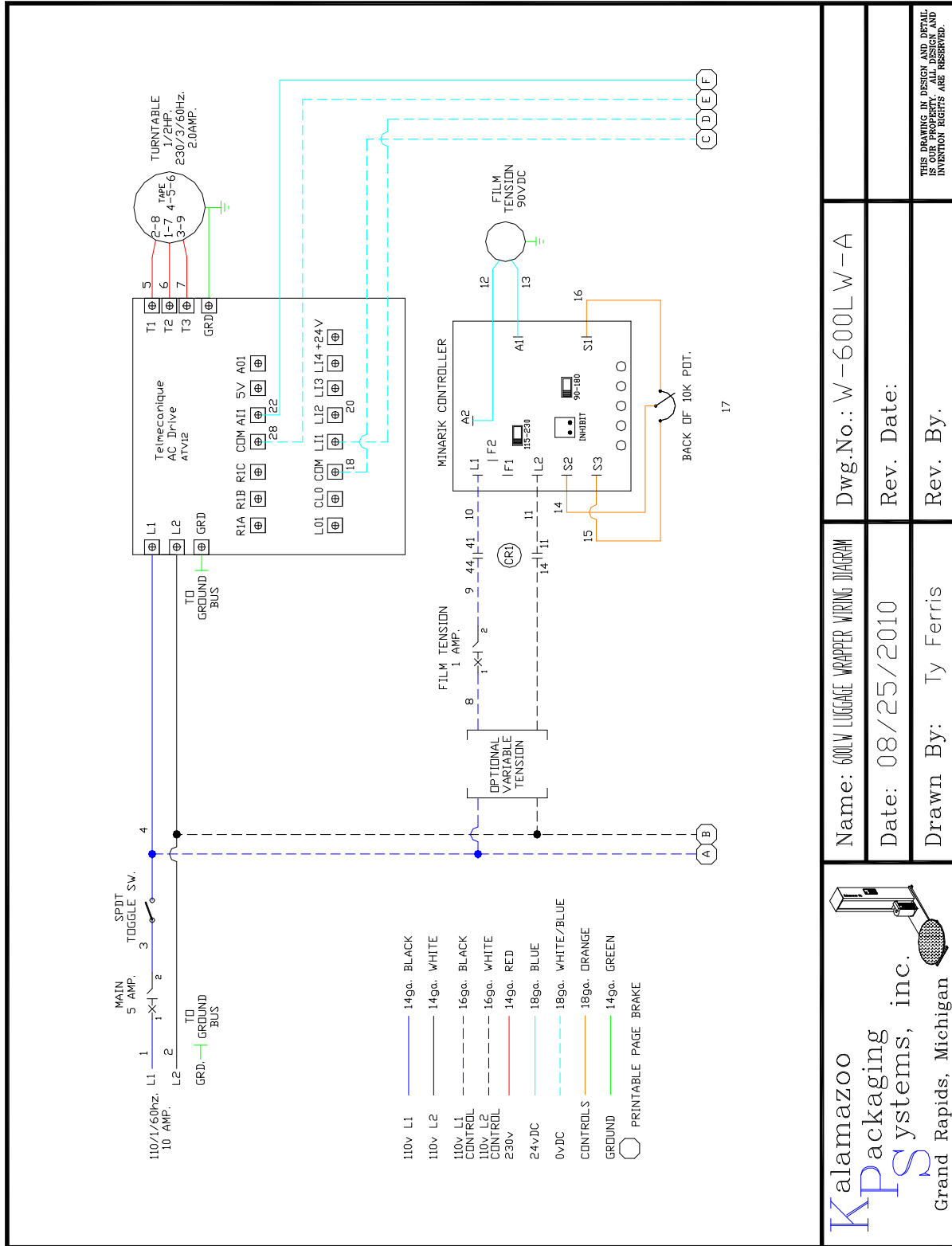
ITEM	PART#	DESCRIPTION	QTY
		9% Stretch Standard	
13	1073324	24 Tooth Pulley	1
14	1073322	22 Tooth Pulley	1
		20% Stretch	
13	1073324	24 Tooth Pulley	1
14	1073320	20 Tooth Pulley	1
7-11	600LW-TOWER-08	Belt Tensioning Kit	1
		33% Stretch	
13	1073324	24 Tooth Pulley	1
14	1073318	18 Tooth Pulley	1
7-11	600LW-TOWER-08	Belt Tensioning Kit	1
		50% Stretch	
13	1073324	24 Tooth Pulley	1
14	1073316	16Tooth Pulley	1
7-11	600LW-TOWER-08	Belt Tensioning Kit	1

Kalamazoo Packaging Systems
Parts manual: 600LW Luggage Wrapper
Constant Perstretch Film Delivery
Available Options.

ITEM	PART#	DESCRIPTION	QTY
		Deck Plates	
2	600LW-BASE-12A	Optional: Aluminum Diamond Plate Deck	
2	600LW-BASE-12SS	Optional: Stainless Steel Deck Plate	
		Variable Tension	
NOT SHOWN	1035020	90vDC Brake 5/8" Bore	1
NOT SHOWN	1312000	90vDC Control	1
NOT SHOWN	2112010	1amp. 1-Pole Breaker	1
		Parts not used on variable tension	
6	1073854	Constant Prestretch Drive Belt	-1
7	F1505	3/8-24 Nylock Nut	-1
8	F1316	3/8" USS Washer	-2
9	600LW-TOWER-08	1" Round UHMW x 2-3/8"	-1
10	F727, F720, F722	1/4-20X 3/4" H.H.C.S., 1/4" Lock Washer 1/4" SAE Washer	-2
11	600LW-TOWER-08	Constant Prestretch Belt Tensioner Slide	-1
12	1073300	Taperlock Bushing	-2
13	1073324	24 Tooth Pulley	-1
14	1073322	22 Tooth Pulley	-1
29	600LW-TOWER-12	4" Film Tension Roller	-1
30	F10x2	3/16"sq. x 2" Keyway	-1



Dwg.No.: W-600LW	Name: 600LW LUGGAGE WRAPPER WIRING DIAGRAM	 Kalamazoo Packaging Systems, Inc. Grand Rapids, Michigan
Rev. Date:	Date: 08/25/2010	
Rev. By:	Drawn By: Ty Ferris	



Kalamazoo
PS Packaging Systems, inc.
Grand Rapids, Michigan

Name: 600W LUGGAGE WRAPPER WIRING DIAGRAM
Date: 08/25/2010
Drawn By: Ty Ferris

Dwg.No.: W-600LW-A
Rev. Date:
Rev. By:

THIS DRAWING IN DESIGN AND DETAIL IS OUR PROPERTY. ALL DESIGN AND INVENTION RIGHTS ARE RESERVED.

